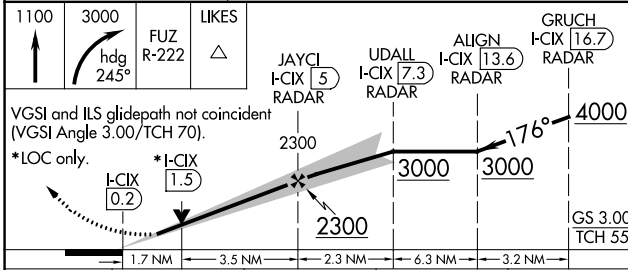
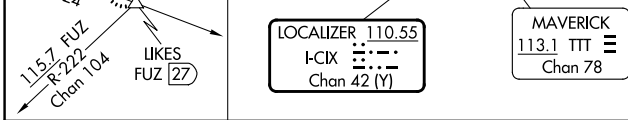
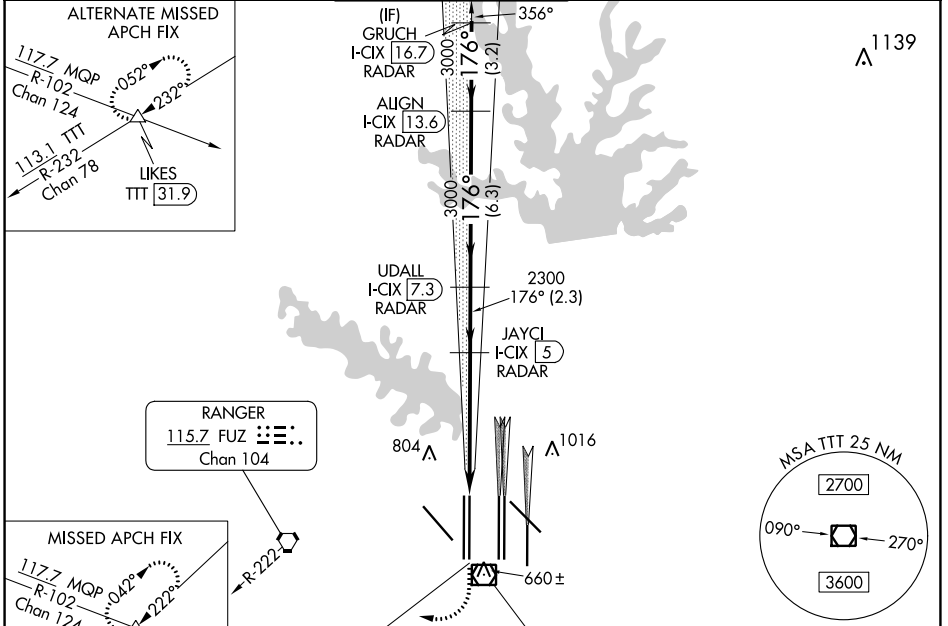


LOC/DME I-CIX 110.55 Chan 42 (Y)	APP CRS 176°	Rwy Idg 18L 13401 18R 13400	TDZE 602 606	Apt Elev 606 606
---	------------------------	---	----------------------------------	--------------------------------------

ILS or LOC RWY 18L

DALLAS-FORT WORTH INTL (DFW)

RADAR required for procedure entry. DME or RADAR required.		Rwy 18L MALSRR	Rwy 18R ALSFF-2	MISSED APPROACH: Climb to 1100, then climbing right turn to 3000 on heading 245° and FUZ VORTAC R-222 to LIKES INT/FUZ 27 DME and hold.	
Simultaneous approach authorized with Rwy 17L/C/R. For inop ALS, increase S-LOC 18L Cat C/D and Sidestep 18R Cat C/D visibility to 1¼ mile. Inop table does not apply to Sidestep 18R Cats A and B.					
D-ATIS ARR 123.775 DEP 135.925	REGIONAL APP CON 118.425	DFW TOWER 126.55 127.5 EAST 124.15 134.9 WEST		GND CON 121.65 121.8 EAST 121.85 WEST	CLNC DEL 128.25 CPDLC



CATEGORY	A	B	C	D
S-ILS 18L	802/18 200 (200-½)			
S-LOC 18L	1220/24	618 (700-½)	1220-1⅓	618 (700-1⅓)
SIDESTEP 18R	1220/50	614 (700-1)	1220-1⅓	1220-1½
			614 (700-1⅓)	614 (700-1½)

ELEV 606 TDZE 602 18L TDZE 606 18R

Plan view details:

- Heading 176°.
- Navigation aids: TWR 855, TWR 799, 36L, 36R, 35L, 35C, 35R.
- Distances: 2300 X 150, 12400 X 150, 12400 X 200, 12400 X 250, 12400 X 300, 12400 X 350, 12400 X 400, 12400 X 450, 12400 X 500, 12400 X 550, 12400 X 600, 12400 X 650, 12400 X 700, 12400 X 750, 12400 X 800, 12400 X 850, 12400 X 900, 12400 X 950, 12400 X 1000.

HIRL all Rwys					
REIL Rwys 13L and 31L					
TDZ/CL all Rwys except 13L and 31L					
FAF to MAP 5.2 NM					
Knots	60	90	120	150	180
Min:Sec	5:12	3:28	2:36	2:05	1:44

SC-2, 08 AUG 2024 to 05 SEP 2024

SC-2, 08 AUG 2024 to 05 SEP 2024