

NDB UWL <b>385</b>	APP CRS <b>087°</b>	Rwy Idg <b>4201</b>
		TDZE <b>1089</b>
		Apt Elev <b>1090</b>

# NDB RWY 10

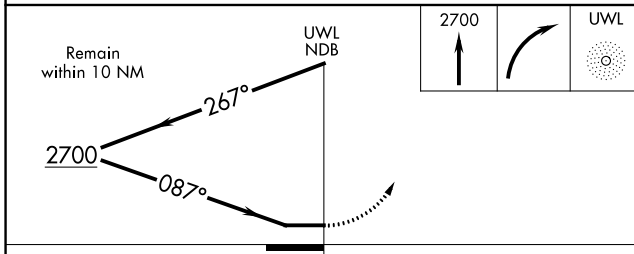
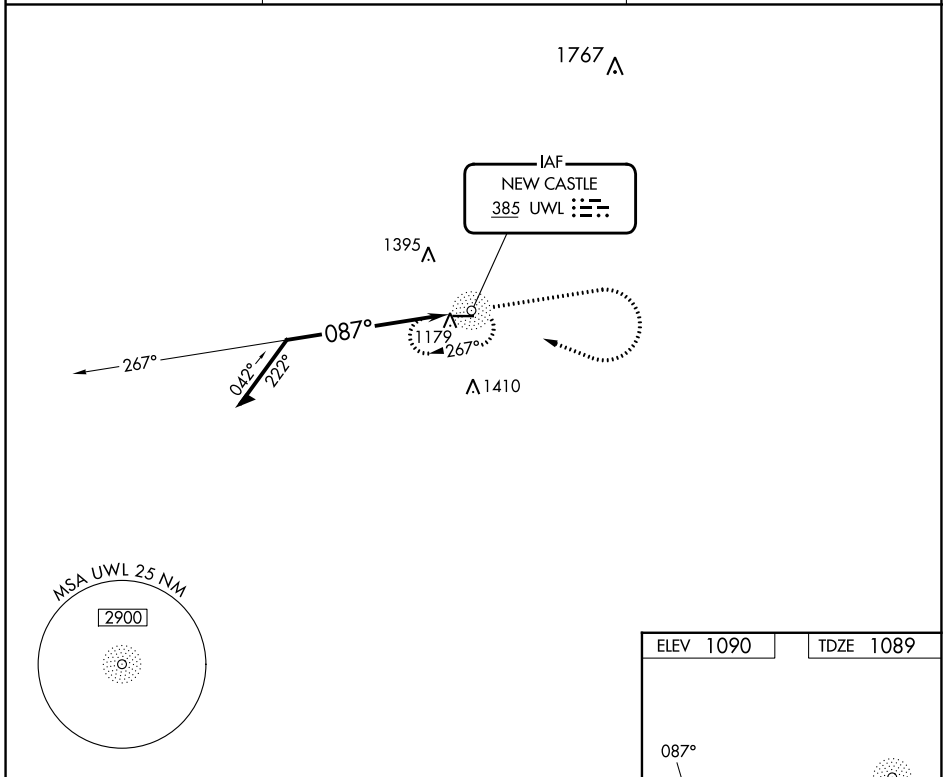
NEW CASTLE HENRY COUNTY MARLATT FLD (UWL)

**RADAR required for procedure entry.**

**▼** Rwy 10 helicopter visibility reduction below 3/4 SM NA. When local altimeter setting not received, use Anderson altimeter setting and increase all MDAs 80 feet, S-10 visibility Cat C/D 1/2 SM, and Circling visibility Cat C/D 1/4 SM.

**▲** MISSED APPROACH: Climb to 2700 then right turn direct UWL NDB and hold.

AWOS-3 <b>132.375</b>	INDIANAPOLIS APP CON <b>135.45 317.8</b>	UNICOM <b>123.05 (CTAF) 0</b>
--------------------------	---	----------------------------------



ELEV 1090	TDZE 1089
-----------	-----------

Diagram of Runway 10 (4201 X 75) showing the NDB RWY 10 and REIL Rwy 10-28. The runway is oriented 087°. The NDB RWY 10 is located 10 feet from the runway end. The REIL Rwy 10-28 is located 28 feet from the runway end.

CATEGORY	A	B	C	D
S-10	1680-1	591 (600-1)	1680-1 3/4	591 (600-1 3/4)
<b>C</b> CIRCLING	1680-1	590 (600-1)	1720-1 3/4	1720-2
			630 (700-1 3/4)	630 (700-2)

# NDB RWY 10

EC-2, 08 AUG 2024 to 05 SEP 2024

EC-2, 08 AUG 2024 to 05 SEP 2024