

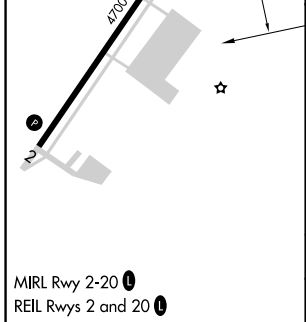
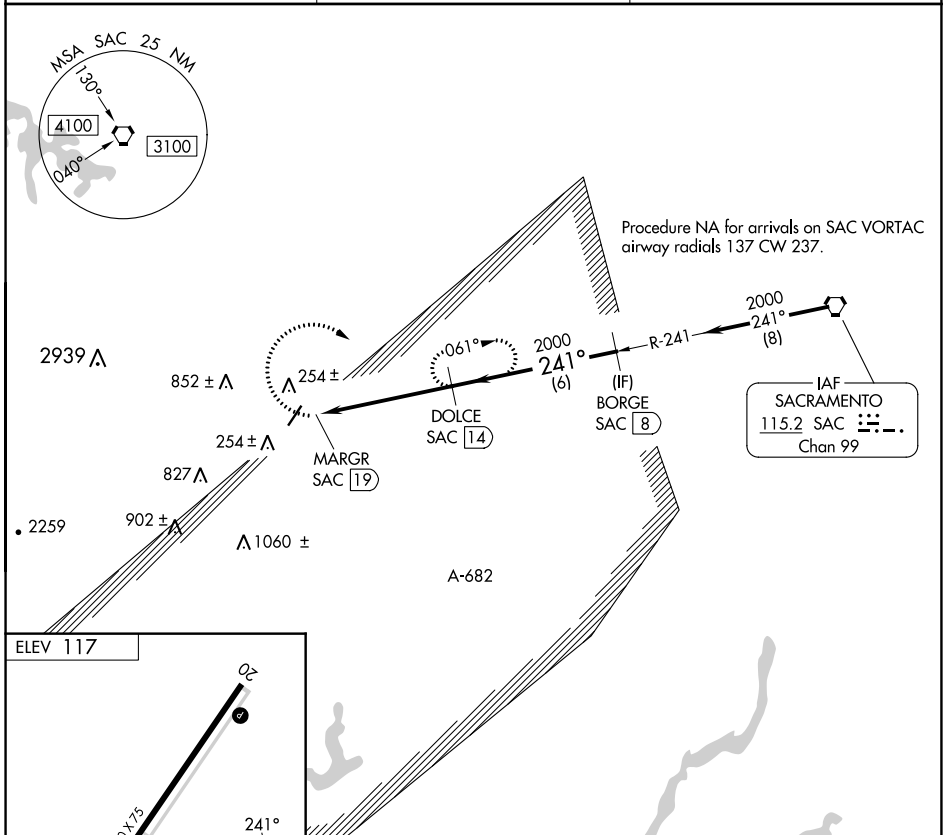
VORTAC SAC 115.2 Chan 99	APP CRS 241°	Rwy Idg TDZE Apt Elev N/A N/A 117
--	------------------------	---

VOR-A
NUT TREE (VCB)

⚠ Rwy 2 helicopter visibility reduction below 1 SM NA.
DME required.
Circling Rwy 2 NA at night.
Circling NA west of Rwy 2-20.

MISSED APPROACH: Climbing right turn to 2200 on heading 100° and SAC R-241 to DOLCE/14 DME and hold.

ASOS 134.75	TRAVIS APP CON 128.4 281.45	CTAF 122.85
-----------------------	---------------------------------------	-----------------------



2200	SAC R-241	DOLCE SAC 14	DOLCE SAC 14	BORGE SAC 8
hdg 100°				
MARGR SAC 19		2000	241°	2000
				Procedure Turn NA
5 NM		6 NM		
CATEGORY	A	B	C	D
C CIRCLING	920-1	803 (900-1)	960-2½ 843 (900-2½)	1360-3 1243 (1300-3)

SW-2, 08 AUG 2024 to 05 SEP 2024

SW-2, 08 AUG 2024 to 05 SEP 2024