

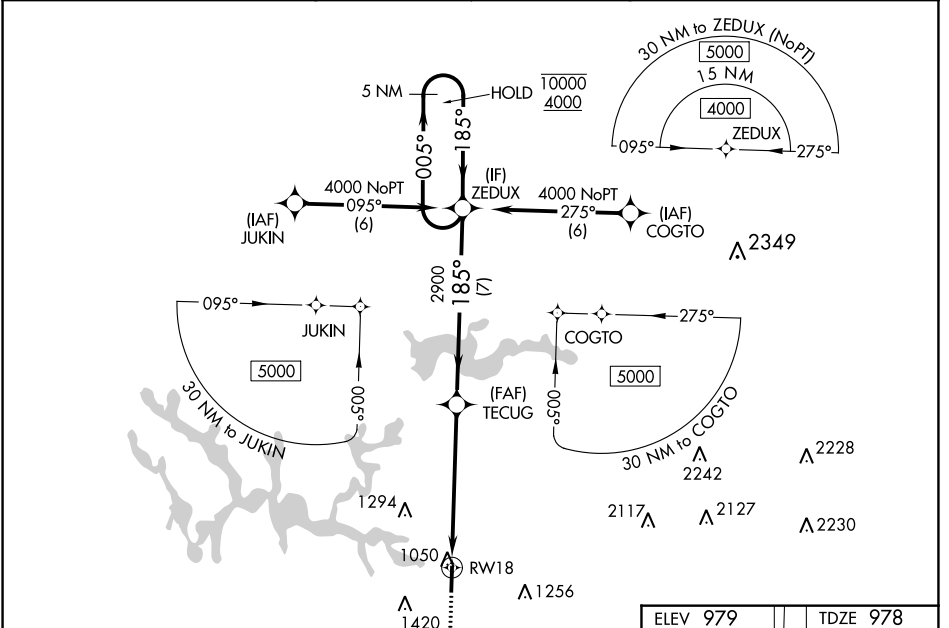
WAAS CH 42708 W18A	APP CRS 185°	Rwy Idg TDZE Apt Elev	5003 978 979
--	------------------------	-----------------------------	---

RNAV (GPS) Z RWY 18

WINCHESTER MUNI (BGF)

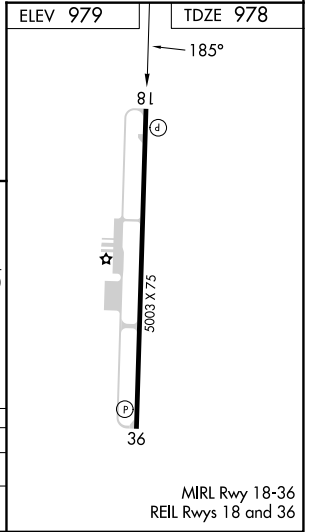
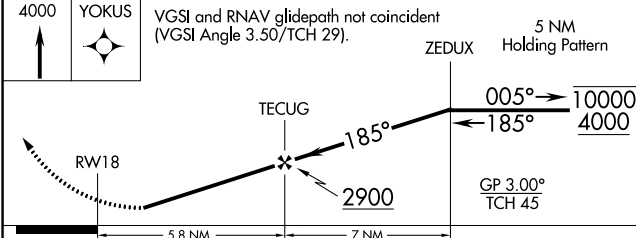
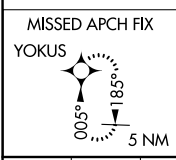
RNP APCH.			MISSED APPROACH: Climb to 4000 direct YOKUS and hold.
<p>▽ Rwy 18 helicopter visibility reduction below 3/4 SM NA. ▲ For uncompensated Baro-VNAV systems, LNAV/VNAV NA below -16°C or above 54°C.</p>			

AWOS-3 121.675	MEMPHIS CENTER 128.15 323.125	GCO 121.725	UNICOM 122.8 (CTAF)
--------------------------	---	-----------------------	-------------------------------



SE-1, 08 AUG 2024 to 05 SEP 2024

SE-1, 08 AUG 2024 to 05 SEP 2024



CATEGORY	A	B	C	D
LPV DA		1375-1 1/2	397 (400-1 1/2)	
LNAV/VNAV DA		1596-2 1/4	618 (700-2 1/4)	