

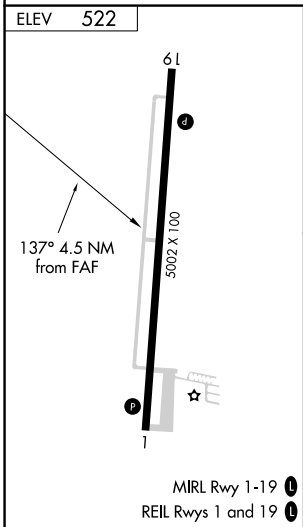
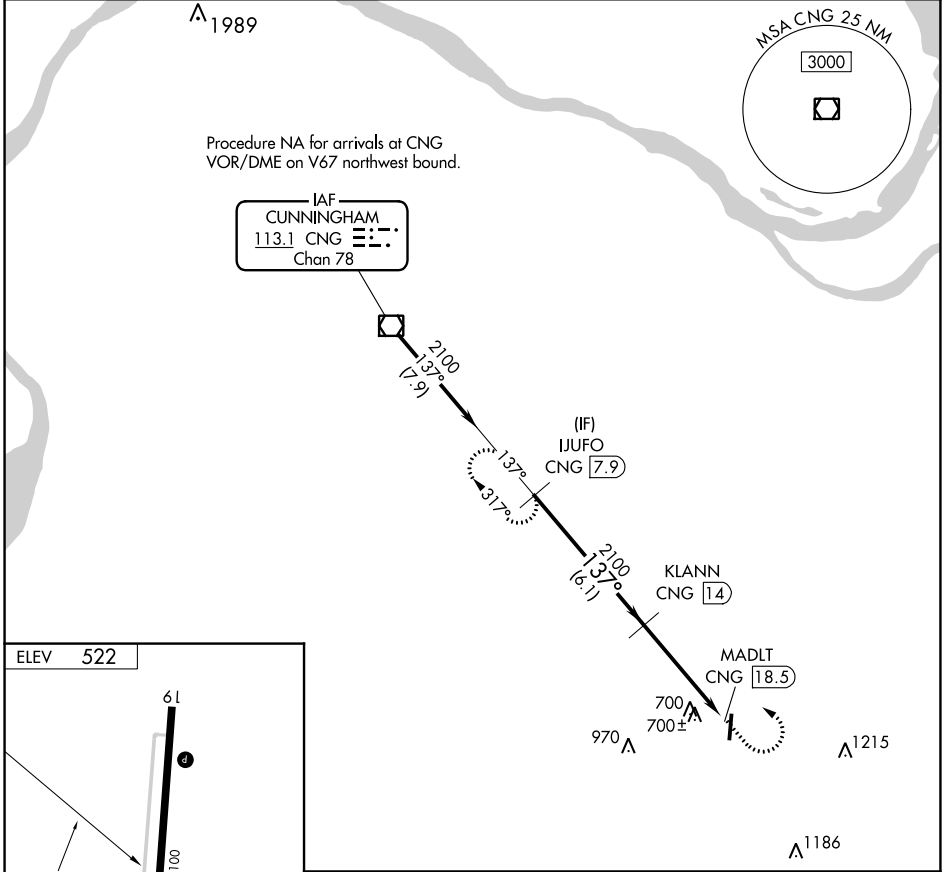
VOR/DME CNG <b>113.1</b> Chan <b>78</b>	APP CRS <b>137°</b>	Rwy Idg TDZE Apt Elev	<b>N/A</b> <b>N/A</b> <b>522</b>
---	------------------------	-----------------------------	--

**VOR/DME-A**  
MAYFIELD GRAVES COUNTY (M25)

**NA** Circling Rwy 1 NA at night. When local altimeter setting not received, use Paducah altimeter setting: increase all MDAs 80 feet and visibility Cats C and D ¼ SM.

MISSED APPROACH: Climb to 1200 then climbing left turn to 2300 on CNG VOR/DME R-137 to IJUFO 7.9 DME and hold.

AWOS-3 <b>120.625</b>	MEMPHIS CENTER <b>133.65 292.15</b>	UNICOM <b>122.8 (CTAF)</b>
--------------------------	--	-------------------------------



	IJUFO CNG 7.9	KLANN CNG 14	1200	2300	IJUFO CNG 7.9
	2100	2100	↑	↘	CNG R-137
	6.1 NM		MADLT CNG 18.5		
	4.5 NM				
CATEGORY	A	B	C	D	
CIRCLING	1060-1	538 (600-1)	1060-1½ 538 (600-1½)	1280-2½ 758 (800-2½)	

SE-1, 08 AUG 2024 to 05 SEP 2024

SE-1, 08 AUG 2024 to 05 SEP 2024