

APP CRS **343°**
 Rwy Idg **4202**
 TDZE **1190**
 Apt Elev **1214**

RNAV (GPS) RWY 34

LAMPASAS (LZZ)

RNP APCH.

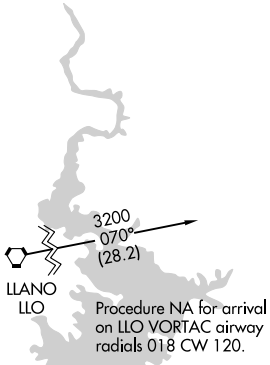
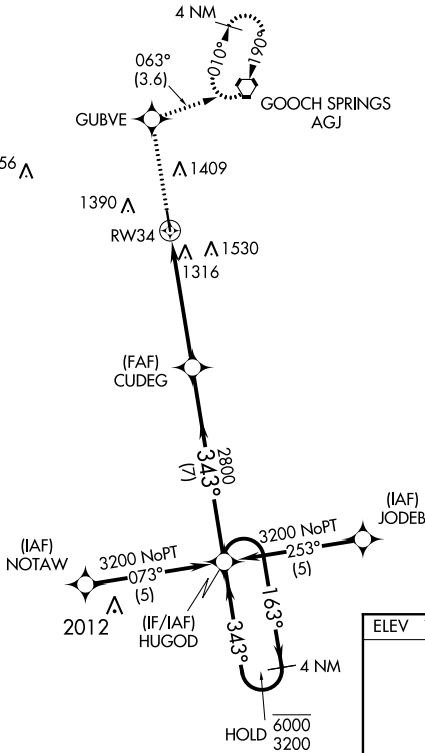
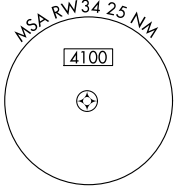
⚠ Circling Rwy 16 NA at night.
 Rwy 34 helicopter visibility reduction below 3/4 SM NA.

MISSED APPROACH: Climb to 3000 direct GUBVE and on track 063° to AGJ VORTAC and hold.

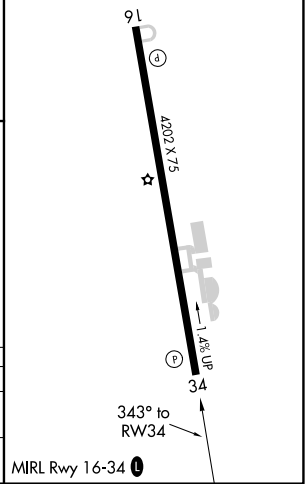
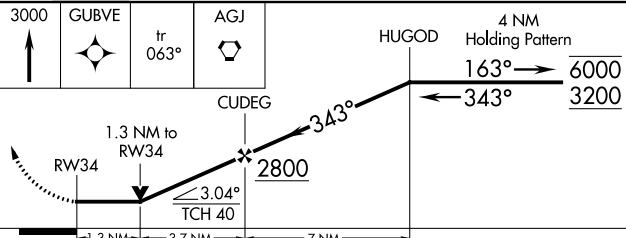
AWOS-3
119.075

GRAY APP CON
120.075 323.15

UNICOM
122.8 (CTAF) 0



ELEV 1214 | TDZE 1190



CATEGORY	A	B	C	D
LNNAV MDA	1620-1	430 (500-1)	1620-1¼ 430 (500-1¼)	NA
CIRCLING	1680-1 466 (500-1)	1880-1 666 (700-1)	1880-1¾ 666 (700-1¾)	NA

SC-3, 08 AUG 2024 to 05 SEP 2024

SC-3, 08 AUG 2024 to 05 SEP 2024