

WAAS CH <b>97628</b> <b>W06A</b>	APP CRS <b>058°</b>	Rwy Idg TDZE Apt Elev	<b>5004</b> <b>733</b> <b>733</b>
--	------------------------	-----------------------------	---

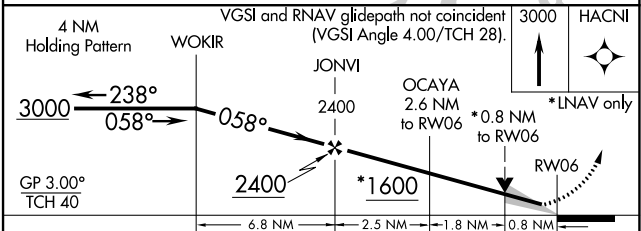
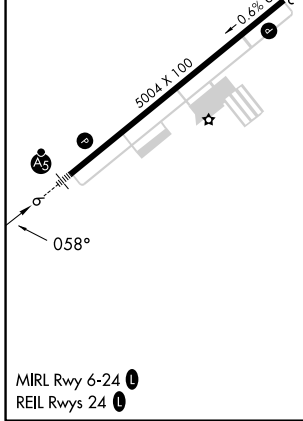
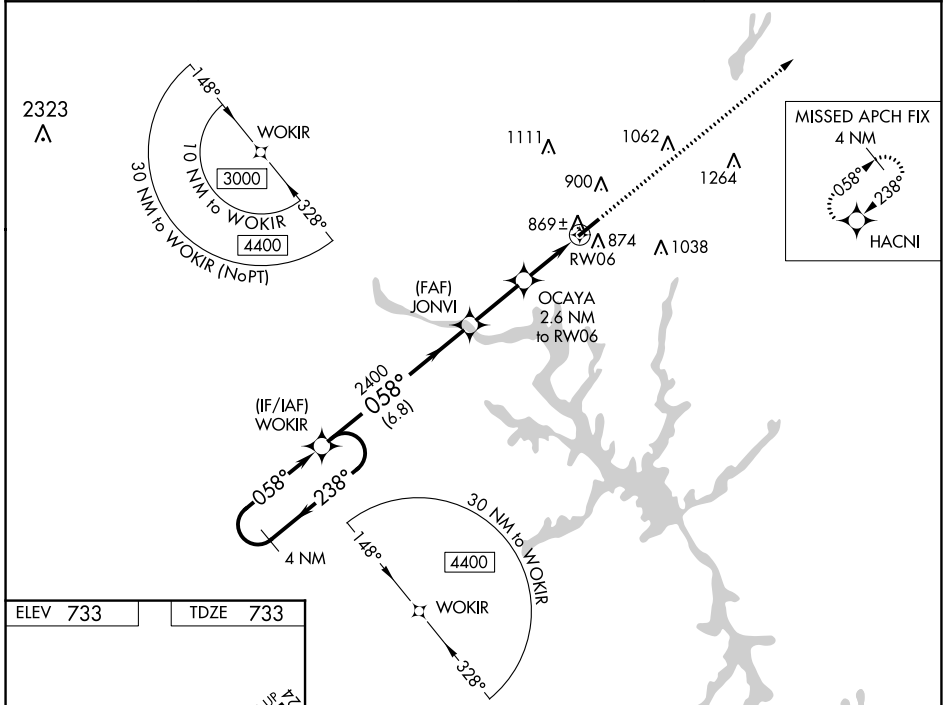
# RNAV (GPS) RWY 6

DAVIDSON COUNTY EXEC (E.XX)

**⚠** For uncompensated Baro-VNAV systems, LNAV/VNAV NA below -16°C (4°F) or above 54°C (130°F). When local altimeter setting not received, use Salisbury altimeter setting and increase all DA 37 feet and all MDA 40, increase LPV, LNAV/VNAV all Cats and LNAV Cat C visibility 1/8 mile. DME/DME RNP-0.3 NA. Baro-VNAV and VDP NA when using Salisbury altimeter setting.

**MALSR** MISSED APPROACH: Climb to 3000 direct HACNI and hold.

AWOS-3 <b>119.825</b>	GREENSBORO APP CON <b>126.6 327.075</b>	GCO <b>135.075</b>	UNICOM <b>122.8 (CTAF) 0</b>
--------------------------	--	-----------------------	---------------------------------



CATEGORY	A	B	C	D
LPV DA	983-7/8	250 (300-7/8)		NA
LNAV/VNAV DA	1020-1	287 (300-1)		NA
LNAV MDA	1120-1	387 (400-1)	1120-1 1/8 387 (400-1 1/8)	NA
CIRCLING	1220-1 487 (500-1)	1240-1 507 (600-1)	1340-1 3/4 607 (700-1 3/4)	NA

SE-2, 08 AUG 2024 to 05 SEP 2024

SE-2, 08 AUG 2024 to 05 SEP 2024