

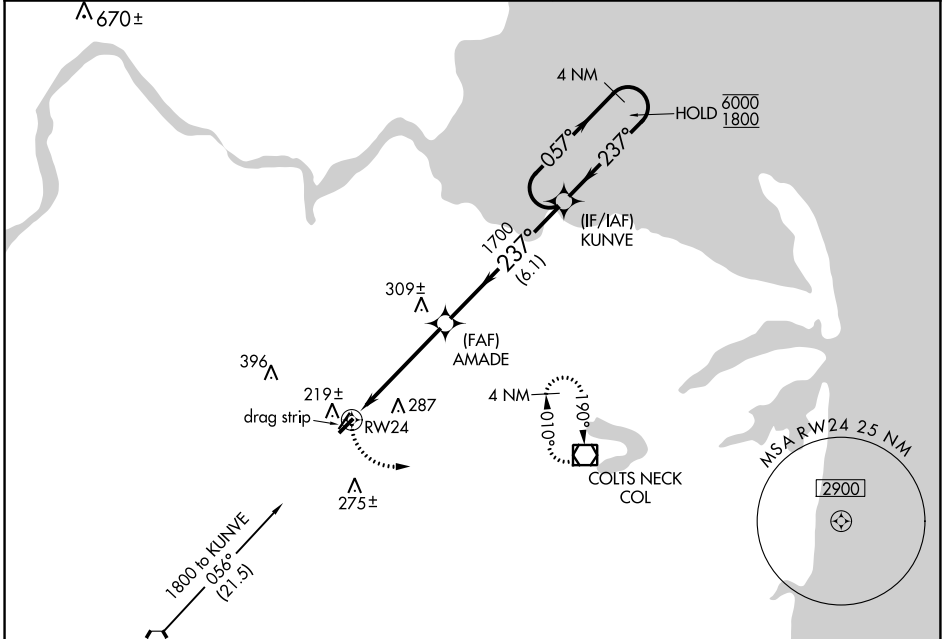
APP CRS	Rwy Idg	3194
237°	TDZE	87
	Apt Elev	87

RNAV (GPS) RWY 24

OLD BRIDGE (3N6)

RNP APCH - GPS.		MISSED APPROACH: Climbing left turn to 2000 direct COL VOR/DME and hold.	
<p>▼ Procedure NA at night. Rwy 24 helicopter visibility reduction below 1 SM NA.</p> <p>▲ NA Use Belmar/Farmingdale altimeter setting; when not received, use Wrightstown altimeter setting and increase all MDA 20 feet.</p>			

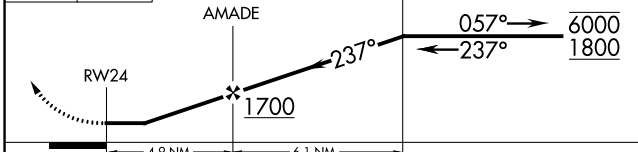
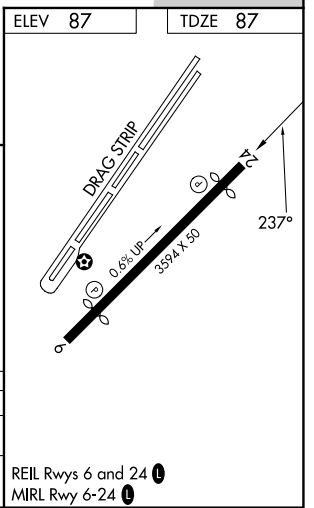
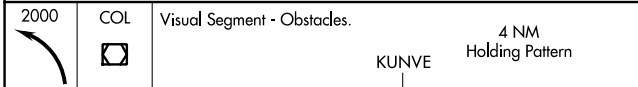
BLM AWOS-3PT 121.625	MC GUIRE APP CON 126.475 363.8	GCO 121.725	UNICOM 123.075 (CTAF)
--------------------------------	--	-----------------------	---------------------------------



NE-2, 08 AUG 2024 to 05 SEP 2024

NE-2, 08 AUG 2024 to 05 SEP 2024

ELEV 87	TDZE 87
----------------	----------------



CATEGORY	A	B	C	D
LNAV MDA	620-1	533 (600-1)	NA	
CIRCLING	620-1 533 (600-1)	640-1 553 (600-1)	NA	

REIL Rwys 6 and 24
MIRL Rwy 6-24