

APP CRS	Rwy Idg	<b>4504</b>
<b>271°</b>	TDZE	<b>481</b>
	Apt Elev	<b>481</b>

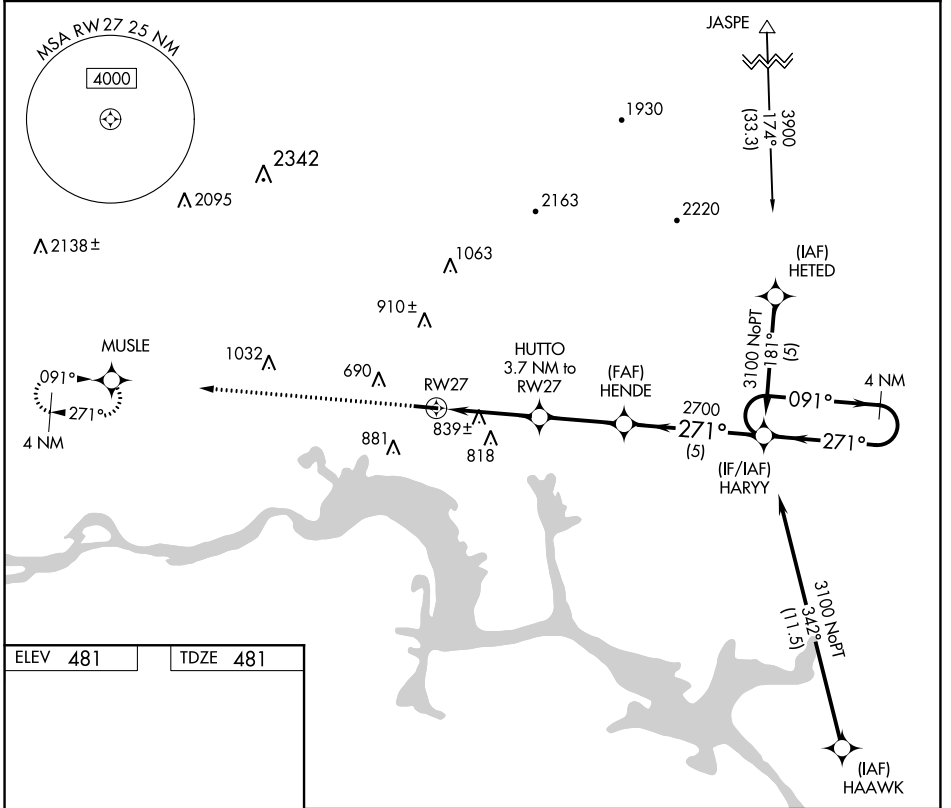
# RNAV (GPS) RWY 27

CLARKSVILLE MUNI (H35)

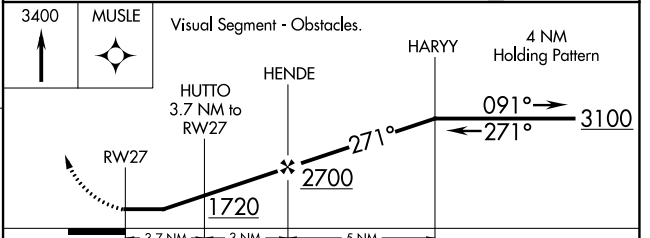
**NA** Use Russellville Rgnl altimeter setting; if not received, use Fort Smith Rgnl altimeter setting and increase all MDAs 60 feet. DME/DME RNP-0.3 NA. Procedure NA at night. Rwy 27 helicopter visibility reduction below 1 SM NA.

MISSED APPROACH: Climb to 3400 direct MUSLE WP and hold.

MEMPHIS CENTER <b>128.475 377.15</b>	UNICOM <b>122.8 (CTAF)</b>
---	-------------------------------



ELEV	481	TDZE	481
MIRL Rwy 9-27			



CATEGORY	A	B	C	D
LNAV MDA	1160-1	679 (700-1)	NA	
CIRCLING	1220-1 739 (800-1)	1240-1¼ 759 (800-1¼)	NA	

SC-1, 08 AUG 2024 to 05 SEP 2024

SC-1, 08 AUG 2024 to 05 SEP 2024