

(SLENA1.SLENA) 24025

AL-6552 (FAA)

CASTROVILLE MUNI (CVB)
CASTROVILLE, TEXAS

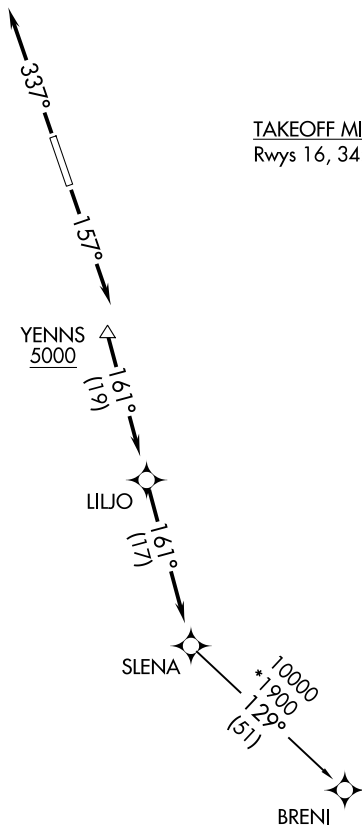
SLENA ONE DEPARTURE (RNAV)

SAN ANTONIO DEP CON
118.05 353.5

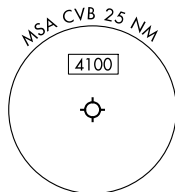
RNAV 1 - DME/DME IRU or GPS.

RADAR required.

**TOP ALTITUDE:
ASSIGNED BY ATC**



TAKEOFF MINIMUMS
Rwys 16, 34: Standard.



NOTE: Chart not to scale.



DEPARTURE ROUTE DESCRIPTION

TAKEOFF RUNWAY 16: Climb on heading 157° or as assigned by ATC, for vectors to YENNS, thence

TAKEOFF RUNWAY 34: Climb on heading 337° or as assigned by ATC, for vectors to YENNS, thence

. . . . on track 161° to LILJO, then on track 161° to SLENA, then on transition.
Maintain ATC assigned altitude.

BRENI TRANSITION (SLENA1.BRENI)

SLENA ONE DEPARTURE (RNAV)
(SLENA1.SLENA) 25JAN24

CASTROVILLE, TEXAS
CASTROVILLE MUNI (CVB)

SC-3, 08 AUG 2024 to 05 SEP 2024

SC-3, 08 AUG 2024 to 05 SEP 2024