

WAAS CH <b>97328</b> W13A	APP CRS <b>131°</b>	Rwy Idg TDZE Apt Elev	<b>7000</b> <b>208</b> <b>208</b>
---------------------------------	------------------------	-----------------------------	---

# RNAV (GPS) RWY 13

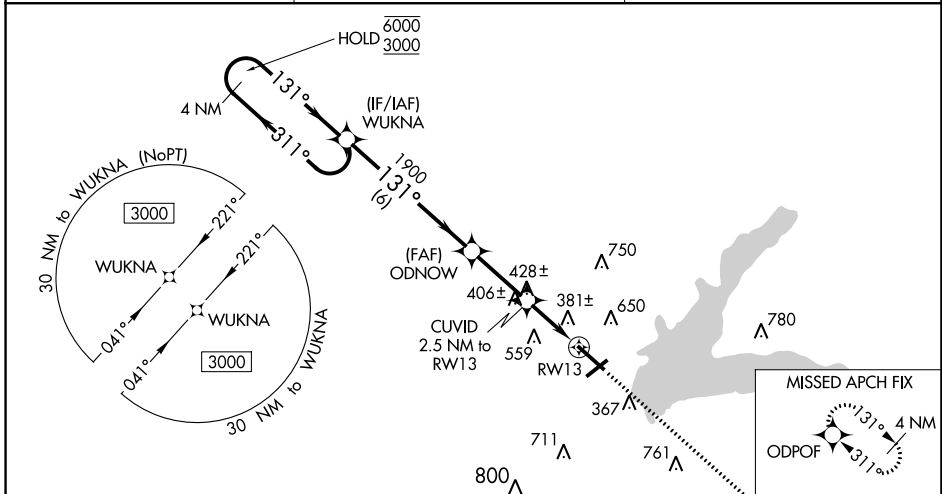
GRENADA MUNI (GNF)

**RNP APCH.**

For uncompensated Baro-VNAV systems, procedure NA below -9°C or above 54°C. Baro-VNAV and VDP NA when using Greenwood altimeter setting. For inop ALS, increase LNAV/VNAV all Cats and LNAV Cat C/D visibility to 1½ SM. When local altimeter setting not received, use Greenwood altimeter setting: Increase all DAs 65 feet; increase all MDAs 80 feet and visibility LNAV Cats C and D and Circling all Cats ¼ SM. For inop ALS when using Greenwood altimeter setting, increase LPV all Cats visibility to ¾ SM and LNAV/VNAV all Cats visibility to 1½ SM. Circling Rwy 4, 22 NA at night.

**MALSR**  
MISSED APPROACH: Climb to 3000 direct ODPOF and hold.

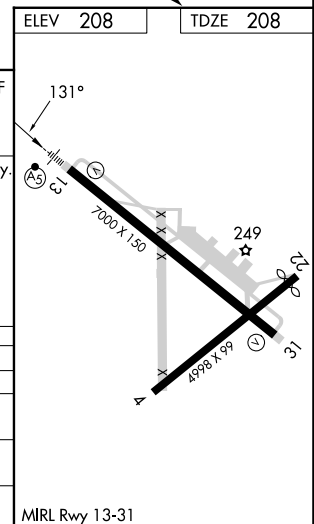
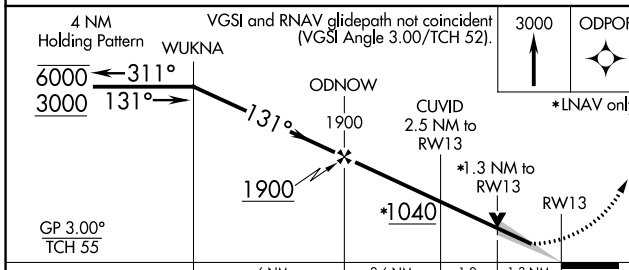
AWOS-3PT <b>118.025</b>	MEMPHIS CENTER <b>128.5 279.55</b>	UNICOM <b>122.8 (CTAF)</b>
----------------------------	---------------------------------------	-------------------------------



SC-4, 08 AUG 2024 to 05 SEP 2024

SC-4, 08 AUG 2024 to 05 SEP 2024

ELEV <b>208</b>	TDZE <b>208</b>
-----------------	-----------------



CATEGORY	A	B	C	D
LPV DA		453-1/2	245 (300-1/2)	
LNAV/VNAV DA		666-1/8	458 (500-1/8)	
LNAV MDA	680-1/2	472 (500-1/2)	680-1	472 (500-1)
<b>CIRCLING</b>	1000-1	792 (800-1)	1000-2/4	1060-2/4
			792 (800-2/4)	852 (900-2/4)