

LOC/DME I-AFP 108.55 Chan 22(Y)	APP CRS 342°	Rwy Idg TDZE Apt Elev	5498 299 300
---	------------------------	-----------------------------	---

ILS or LOC RWY 34

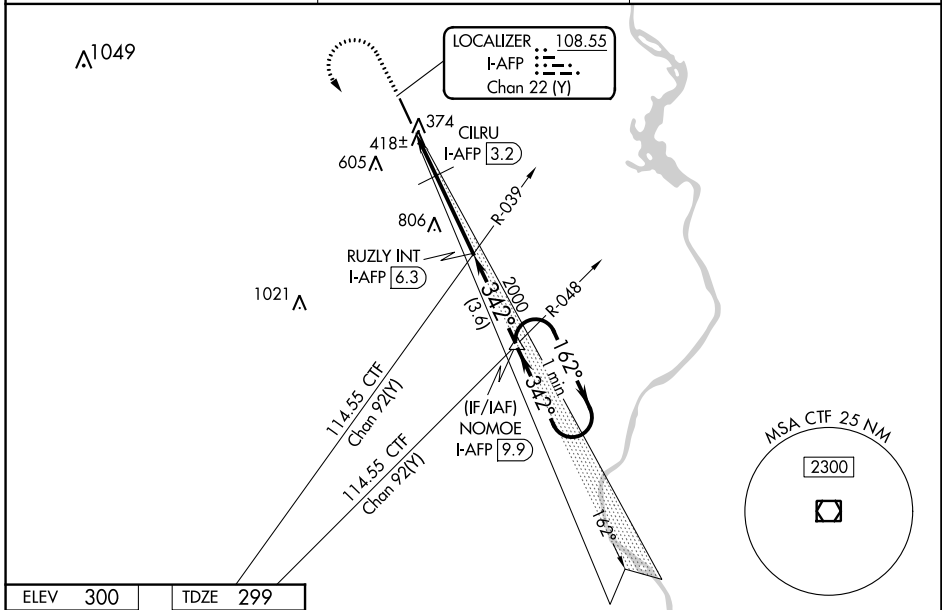
ANSON COUNTY/JEFF CLOUD FLD (AFP)

▽
▲

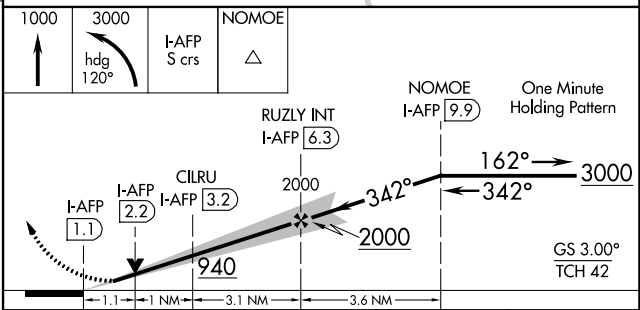
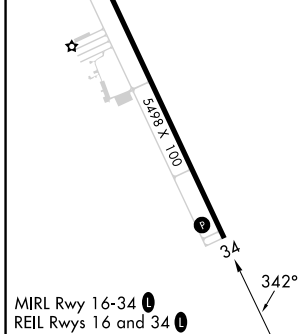
Rwy 34 helicopter visibility reduction below 3/4 SM NA.

MISSED APPROACH: Climb to 1000 then climbing left turn to 3000 on heading 120° and on I-AFP S course (162°) to NOMOE INT/I-AFP 9.9 DME and hold.

AWOS-3 119.325	CHARLOTTE APP CON 120.05 307.8	UNICOM 122.8 (CTAF) 1
--------------------------	--	---------------------------------



ELEV 300	TDZE 299
----------	----------



CATEGORY	A	B	C	D
S-ILS 34	649-1 350 (400-1)			
S-LOC 34	940-1	641 (700-1)	940-1 7/8	641 (700-1 7/8)
CILRU FIX MINIMUMS				
S-LOC 34	820-1	521 (600-1)	820-1 1/2	521 (600-1 1/2)

Knots	60	90	120	150	180
Min:Sec	5:12	3:28	2:36	2:05	1:44

SE-2, 08 AUG 2024 to 05 SEP 2024

SE-2, 08 AUG 2024 to 05 SEP 2024