

LANETT, ALABAMA

AL-6620 (FAA)

24081

WAAS CH <b>90244</b> <b>W06A</b>	APP CRS <b>057°</b>	Rwy Idg TDZE Apt Elev	<b>5400</b> <b>615</b> <b>624</b>
--	------------------------	-----------------------------	---

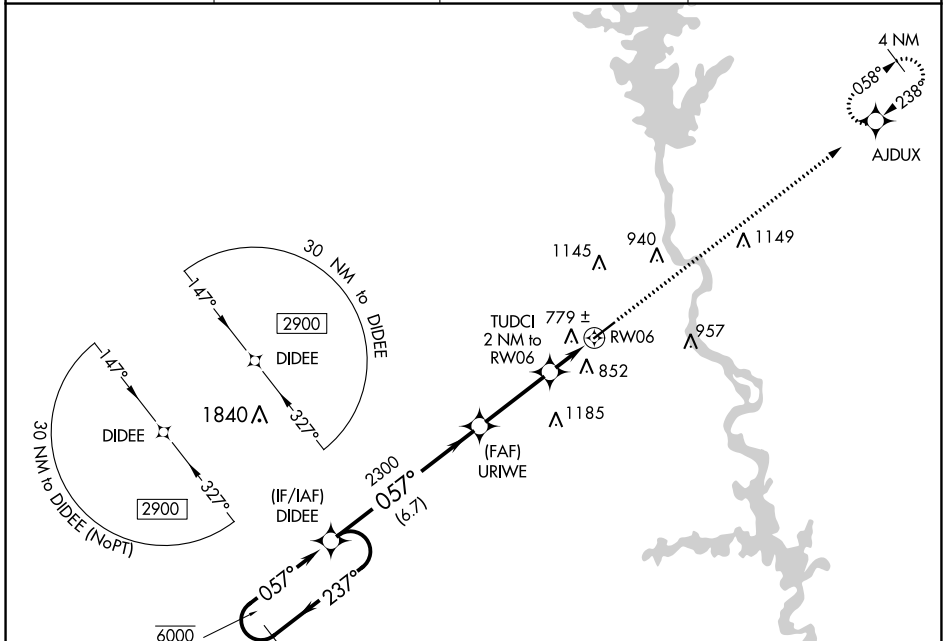
# RNAV (GPS) RWY 6

LANETT RGNL (7A3)

RNP APCH-GPS.  
 Procedure NA at night. Baro-VNAV NA. Use LaGrange altimeter setting.

MISSED APPROACH: Climb to 2800 direct AJDUX and hold.

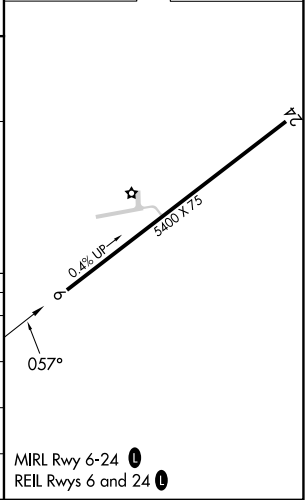
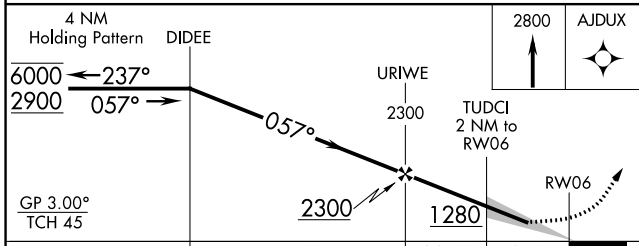
LGC AWOS-3 <b>126.325</b>	ATLANTA CENTER <b>120.45 298.85</b>	ATLANTA APP CON ★ <b>125.5 323.1</b>	UNICOM <b>122.8 (CTAF)</b>
------------------------------	--	---	-------------------------------



SE-4, 08 AUG 2024 to 05 SEP 2024

SE-4, 08 AUG 2024 to 05 SEP 2024

ELEV	624	TDZE	615
------	-----	------	-----



CATEGORY	A	B	C	D
LPV DA		956-1	341 (400-1)	
LNAV/VNAV DA		1094-1 $\frac{3}{8}$	479 (500-1 $\frac{3}{8}$ )	
LNAV MDA	1080-1	465 (500-1)	1080-1 $\frac{3}{8}$	465 (500-1 $\frac{3}{8}$ )
CIRCLING	1240-1	616 (700-1)	1620-3	996 (1000-3)

LANETT, ALABAMA  
 Orig 27JAN22

32°49'N-85°14'W

# LANETT RGNL (7A3)

## RNAV (GPS) RWY 6

MIRL Rwy 6-24  
 REIL Rwys 6 and 24