


LOM JV <b>331</b>	APP CRS <b>182°</b>	Rwy Idg TDZE Apt Elev	<b>7000</b> <b>476</b> <b>476</b>
----------------------	------------------------	-----------------------------	---

# NDB RWY 18

CLARK RGNL (JVY)

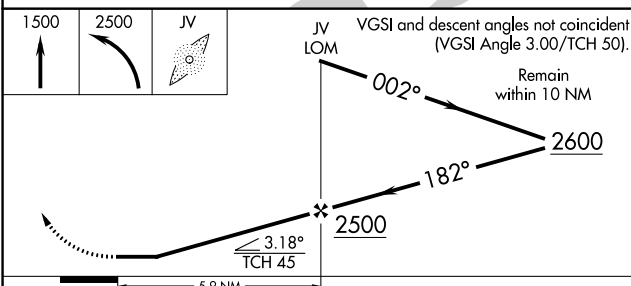
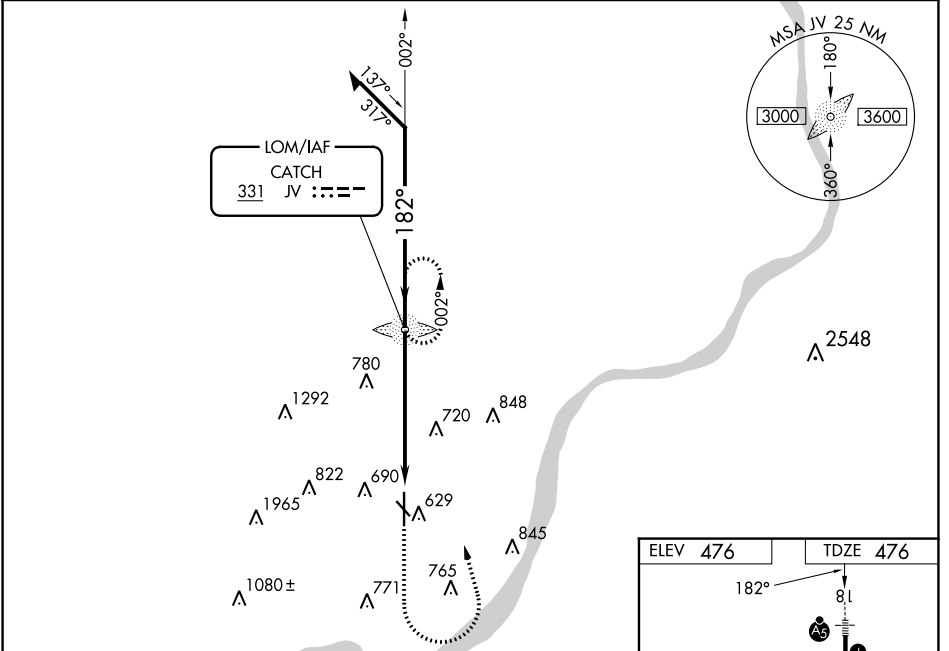
**RADAR** required for procedure entry.

**NA** Circling NA for Cat D southwest of Rws 14 and 36. Circling Rwy 14, 32 NA at night. For inop ALS, increase S-18 Cats A and B visibility to 1 SM and Cats C and D to 1 3/4 SM. When local altimeter setting not received, use Louisville Muhammad Ali Intl altimeter setting and increase all MDAs 40 feet and Circling visibility Cat C 1/8 SM. For inop ALS when using Louisville Muhammad Ali Intl altimeter setting, increase S-18 Cats A and B visibility to 1 SM.

**MALS** 

**MISSED APPROACH:** Climb to 1500 then climbing left turn to 2500 direct CATCH LOM and hold.

AWOS-3 <b>118.575</b>	LOUISVILLE APP CON <b>132.075 327.0</b>	CLNC DEL <b>118.05</b>	UNICOM <b>122.7 (CTAF) 0</b>
--------------------------	--	---------------------------	---------------------------------



ELEV 476	TDZE 476
----------	----------

REIL Rws 14 and 32  
REIL Rwy 36 **0**  
MIRL Rws 14-32 and 18-36

FAF to MAP 5.9 NM

Knots	60	90	120	150	180
Min:Sec	5:54	3:56	2:57	2:22	1:58

CATEGORY	A	B	C	D
S-18	1080-3/4 604 (700-3/4)		1080-1 3/8 604 (700-1 1/8)	
<b>C</b> CIRCLING	1080-1 604 (700-1)		1080-1 3/4 604 (700-1 3/4)	1100-2 624 (700-2)

EC-2, 08 AUG 2024 to 05 SEP 2024

EC-2, 08 AUG 2024 to 05 SEP 2024