

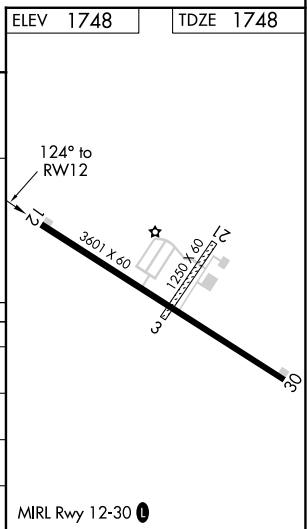
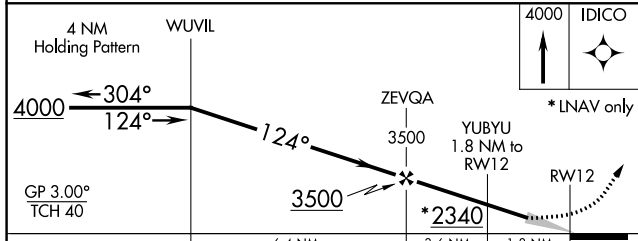
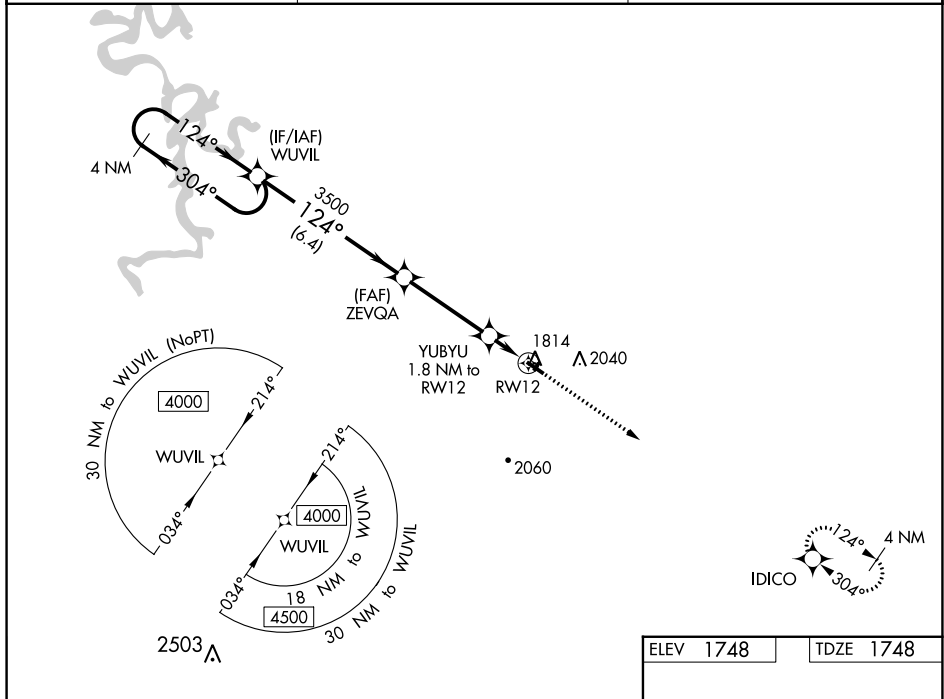
WAAS CH 69331 W12A	APP CRS 124°	Rwy Idg TDZE Apt Elev	3601 1748 1748
--	------------------------	-----------------------------	---

RNAV (GPS) RWY 12

HUNTSVILLE MUNI (H34)

RNP APCH - GPS.		MISSED APPROACH: Climb to 4000 direct IDICO and hold.
▼ NA	Baro-VNAV NA. Use Springdale altimeter setting; when not received, use Drake Fld altimeter setting and increase all DA 18 feet and all MDA 20 feet; increase LPV all Cats, LNAV/VNAV all Cats and LNAV Cat C visibilities ½ mile. Circling NA to Rwys 3 and 21.	

ASG AWOS-3 124.675	RAZORBACK APP CON ★ 126.6 305.2	UNICOM 122.8 (CTAF) 0
------------------------------	---	---------------------------------



CATEGORY	A	B	C	D
LPV DA	2097-1½	349 (400-1½)		NA
LNAV/VNAV DA	2097-1½	349 (400-1½)		NA
LNAV MDA	2180-1	432 (500-1)	2180-1¼ 432 (500-1¼)	NA
CIRCLING	2280-1 532 (600-1)	2520-1 772 (800-1)	2520-2¼ 772 (800-2¼)	NA