

WAAS CH 72916 W14A	APP CRS 137°	Rwy Idg TDZE Apt Elev	5006 1157 1162
--	------------------------	-----------------------------	---

RNAV (GPS) RWY 14

BEDFORD COUNTY (HMIZ)

RNP APCH.

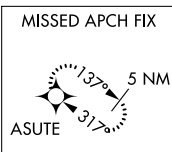
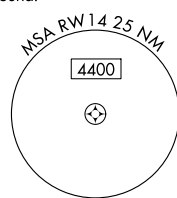
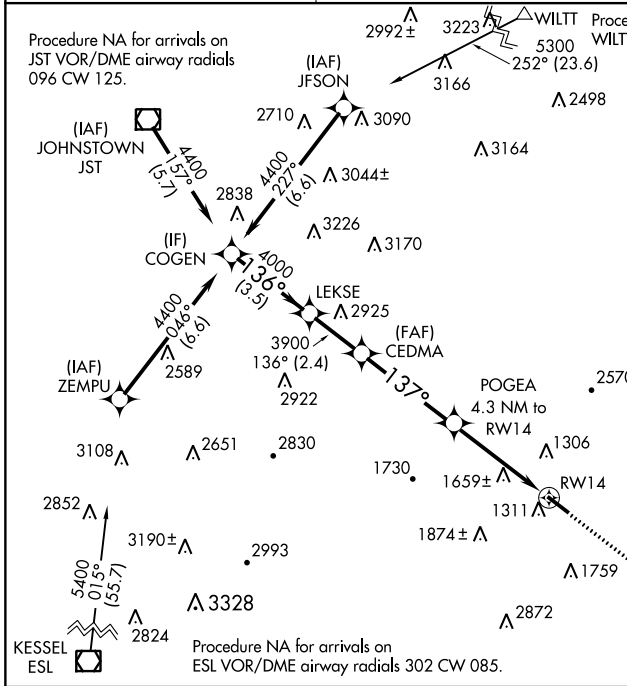
⚠ For uncompensated Baro-VNAV systems, LNAV/VNAV NA below -17°C or above 54°C.

MISSED APPROACH: Climb to 5000 direct ASUTE and hold, continue climb-in-hold to 5000.

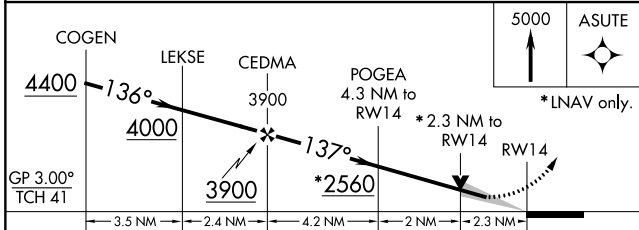
AWOS-3
123.675

JOHNSTOWN APP CON *
121.2 299.2

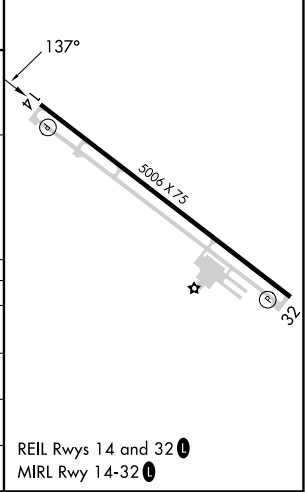
UNICOM
122.7 (CTAF) 0



ELEV 1162	TDZE 1157
-----------	-----------



CATEGORY	A	B	C	D
LPV DA		1640-1½	483 (500-1½)	
LNAV/VNAV DA		2050-4	893 (900-4)	
LNAV MDA	1920-1 763 (800-1)	1920-1¼ 763 (800-1¼)	1920-2½	763 (800-2½)
CIRCLING	1920-1 758 (800-1)	1960-1¼ 798 (800-1¼)	2200-3 1038 (1100-3)	2940-3 1778 (1800-3)



NE-4, 08 AUG 2024 to 05 SEP 2024

NE-4, 08 AUG 2024 to 05 SEP 2024