

WAAS CH 56622 W32A	APP CRS 328°	Rwy Idg TDZE Apt Elev	3296 1242 1242
--	------------------------	-----------------------------	---

RNAV (GPS) RWY 32

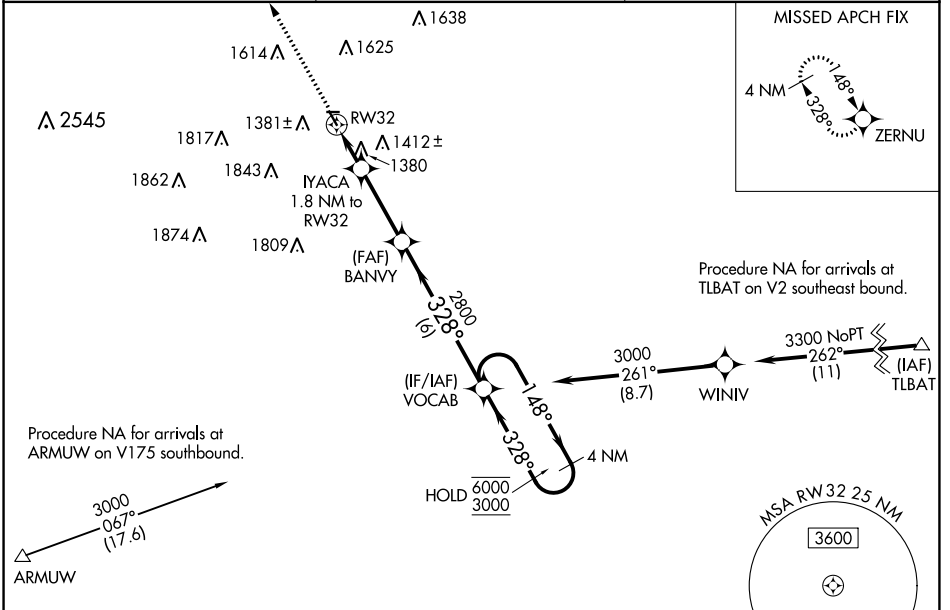
SAUK CENTRE MUNI (D39)

RNP APCH - GPS.

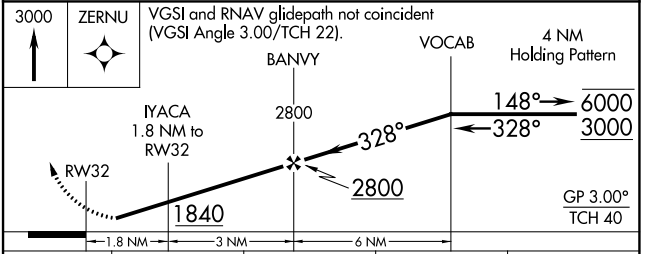
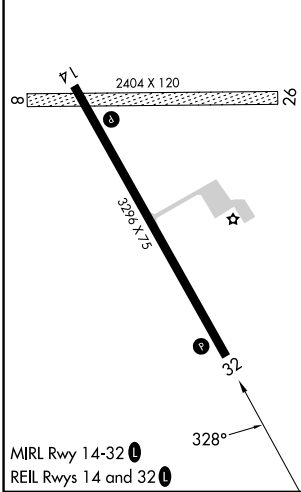
⚠ Circling NA to Rwys 8 and 26. Rwy 32 helicopter visibility reduction below $\frac{3}{4}$ SM NA. For uncompensated Baro-VNAV systems, LNAV/VNAV NA below -17°C or above 54°C .

MISSED APPROACH: Climb to 3000 direct ZERNU and hold.

AWOS-3 118.475	MINNEAPOLIS CENTER 126.1 269.2	CTAF 122.9
--------------------------	--	----------------------



ELEV 1242	TDZE 1242
-----------	-----------



CATEGORY	A	B	C	D
LPV DA	1492-1	250 (300-1)		NA
LNAV/VNAV DA	1693-1 $\frac{3}{8}$	451 (500-1 $\frac{3}{8}$)		NA
LNAV MDA	1680-1	438 (500-1)		NA
C CIRCLING	1700-1 458 (500-1)	1740-1 498 (500-1)		NA

NC-1, 08 AUG 2024 to 05 SEP 2024

NC-1, 08 AUG 2024 to 05 SEP 2024