

| | | | |
|--|------------------------|-----------------------------|---|
| WAAS CH 90116 W01A | APP CRS 013° | Rwy Idg TDZE Apt Elev | 6000 467 488 |
|--|------------------------|-----------------------------|---|

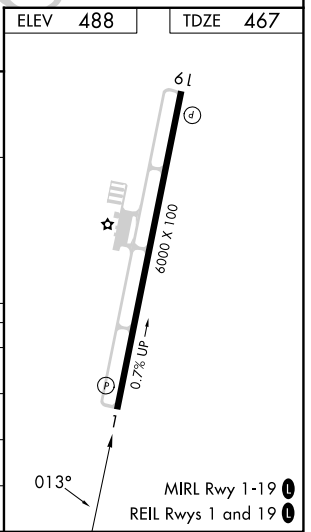
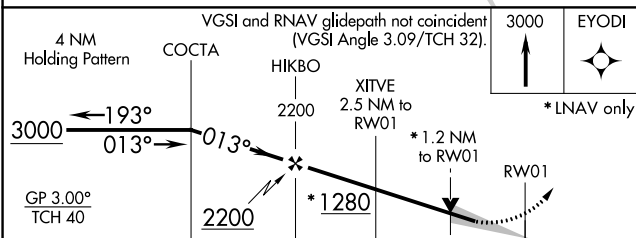
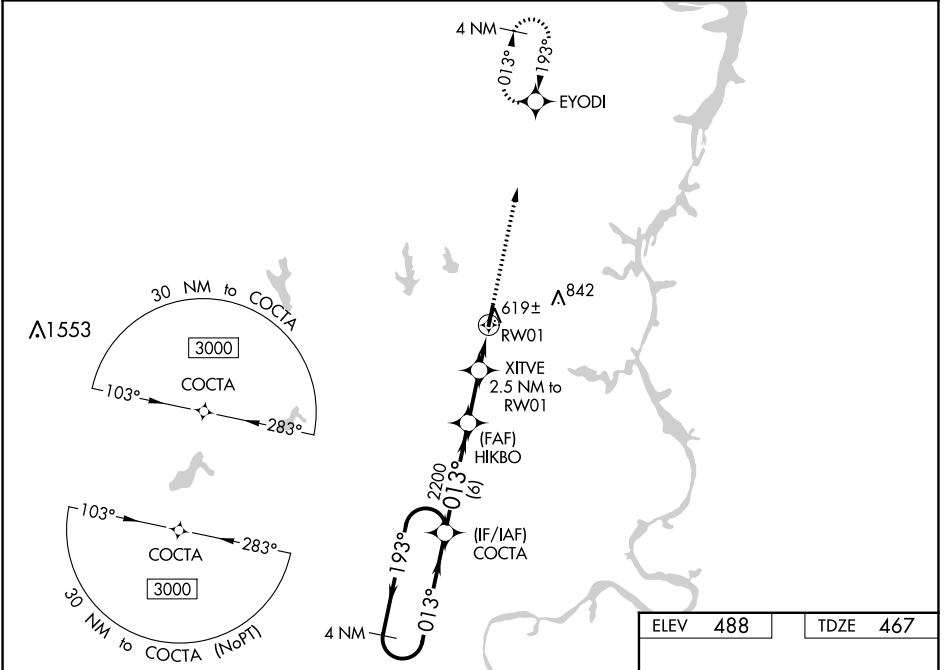
RNAV (GPS) RWY 1

BEECH RIVER RGNL (PVE)

⚠ For uncompensated Baro-VNAV systems, LNAV/VNAV NA below -15°C (5° F) or above 54°C (130°F).
⚠ DME/DMÉ RNP-0.3 NA. When local altimeter setting not received, use Jackson altimeter setting: increase LPV all Cats DA to 807 and all Cats visibility 3/8 mile; increase LNAV/VNAV all Cats DA to 911 and all Cats visibility 3/8 mile; increase all MDA 100 feet and LNAV Cats C/D and Circling Cat C visibility 1/2 mile and Circling Cat D visibility 1/2 mile. Baro-VNAV and VDP NA when using Jackson altimeter setting.

MISSED APPROACH: Climb to 3000 direct EYODI and hold.

| | | |
|--------------------------|--|---------------------------------|
| AWOS-3 118.125 | MEMPHIS CENTER 125.85 379.25 | UNICOM 123.0 (CTAF) 0 |
|--------------------------|--|---------------------------------|



| CATEGORY | A | B | C | D |
|--------------|-------------|-------------|-----------------|-----------------|
| LPV DA | | 717-7/8 | 250 (300-7/8) | |
| LNAV/VNAV DA | | 821-1 1/4 | 354 (400-1 1/4) | |
| LNAV MDA | 880-1 | 413 (400-1) | 880-1 1/8 | 413 (400-1 1/8) |
| CIRCLING | 940-1 | 980-1 | 1000-1 1/2 | 1200-2 1/4 |
| | 452 (500-1) | 492 (500-1) | 512 (600-1 1/2) | 712 (800-2 1/4) |

SE-1, 08 AUG 2024 to 05 SEP 2024

SE-1, 08 AUG 2024 to 05 SEP 2024