

LOC/DME I-BBG 111.35 Chan 50 (Y)	APP CRS 323°	Rwy Idg 7140
		TDZE 1302
		Apt Elev 1302

ILS or LOC RWY 32

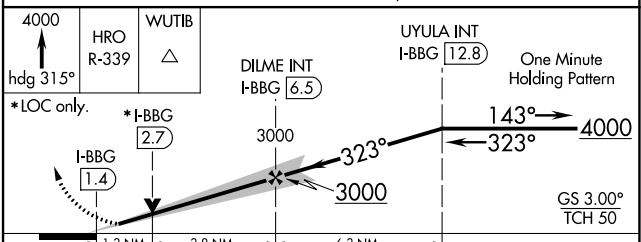
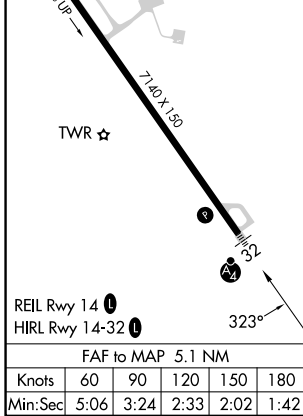
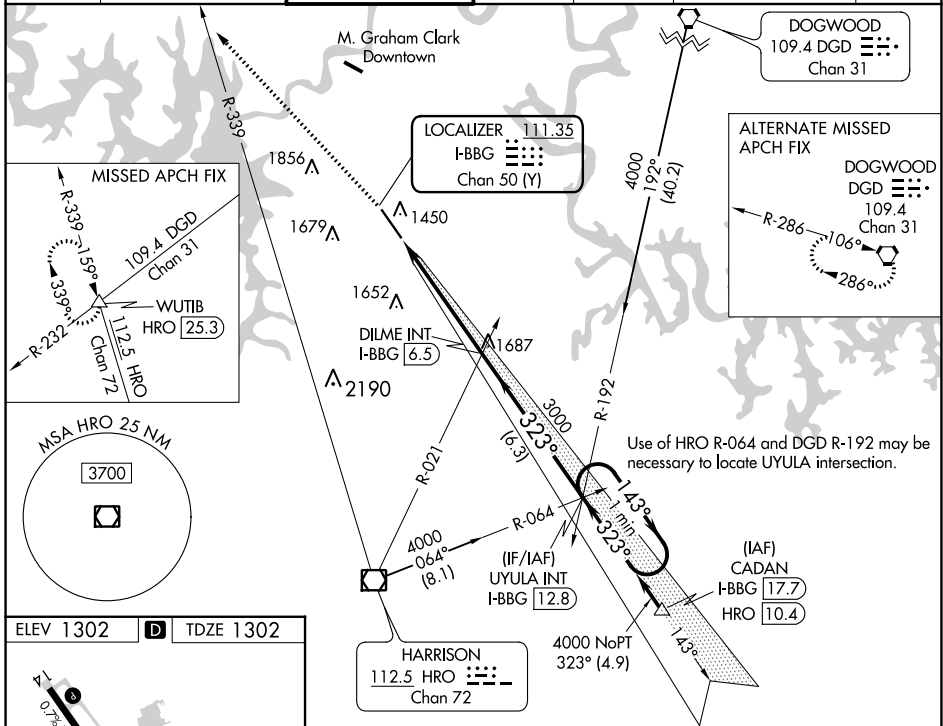
BRANSON (BBG)

NA Inop table does not apply. When local altimeter setting not received, use Harrison altimeter setting and increase S-ILS 32 DA to 1549 feet; increase all MDAs 60 feet and S-LOC 32 visibility Cat C/D and Circling visibility Cat C 1/4 SM. VDP NA when using Harrison altimeter setting.

MALSF

MISSED APPROACH: Climb to 4000 on heading 315° and HRO VOR/DME R-339 to WUTIB INT/HRO 25.3 DME and hold.

ATIS 124.625	SPRINGFIELD APP CON 126.35	BRANSON TOWER★ 128.15 (CTAF)	GND CON 118.4	CLNC DEL 118.4	SPRINGFIELD CLNC DEL 126.35 (When tower closed)	UNICOM 122.95
------------------------	--------------------------------------	--	-------------------------	--------------------------	--	-------------------------



CATEGORY	A	B	C	D
S-ILS 32		1502-1	200 (200-1)	
S-LOC 32		1760-1	458 (500-1)	
C CIRCLING	1760-1 458 (500-1)	1900-1 598 (600-1)	2220-2¾ 918 (1000-2¾)	2220-3 918 (1000-3)

NC-3, 08 AUG 2024 to 05 SEP 2024

NC-3, 08 AUG 2024 to 05 SEP 2024