

WAAS CH 62837 W11A	APP CRS 111°	Rwy ldg TDZE 721 Apt Elev 721	3850
----------------------------------------	------------------------	---------------------------------------------------	-------------

RNAV (GPS) RWY 11

CYNTHIANA-HARRISON COUNTY (Ø18)

RNP APCH.

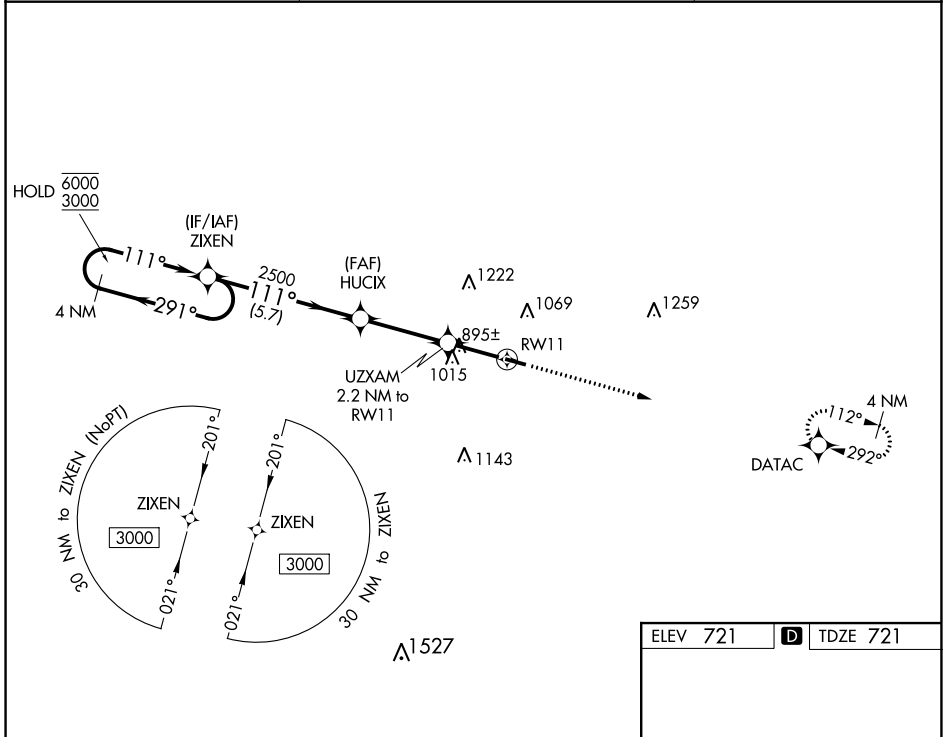
▼ Procedure NA at night. Rwy 11 helicopter visibility reduction below 1 SM NA.
▲ NA Use Georgetown altimeter setting; when not received, use Lexington altimeter setting and increase all MDA 40 feet.

MISSED APPROACH:
Climb to 3000 direct
DATAC and hold.

27K AWOS-3
119.975

LEXINGTON APP CON
120.15 259.3 (040°-220°)
120.75 298.9 (221°-039°)

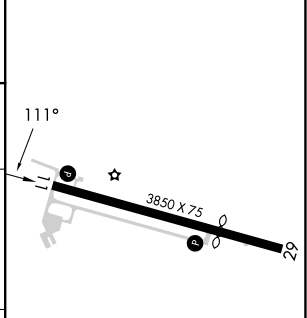
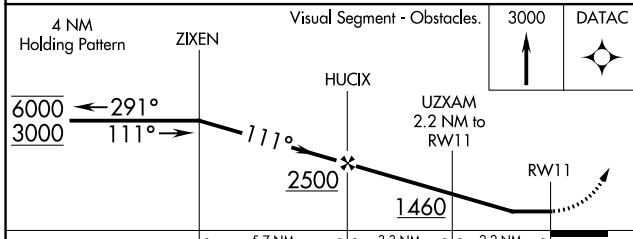
UNICOM
122.8 (CTAF) Ø



SE-1, 08 AUG 2024 to 05 SEP 2024

SE-1, 08 AUG 2024 to 05 SEP 2024

ELEV 721	D TDZE 721
----------	-------------------



CATEGORY	A	B	C	D
LP MDA	1220-1	499 (500-1)		NA
LNAV MDA	1300-1	579 (600-1)		NA
C CIRCLING	1340-1 619 (700-1)	1560-1¼ 839 (900-1¼)		NA

MIRL Rwy 11-29 Ø
REIL Rws 11 and 29 Ø