

WAAS CH <b>42537</b> <b>W29A</b>	APP CRS <b>292°</b>	Rwy Idg <b>2756</b> TDZE <b>721</b> Apt Elev <b>721</b>
--	------------------------	---

# RNAV (GPS) RWY 29

CYNTHIANA-HARRISON COUNTY (Ø18)

RNP APCH.

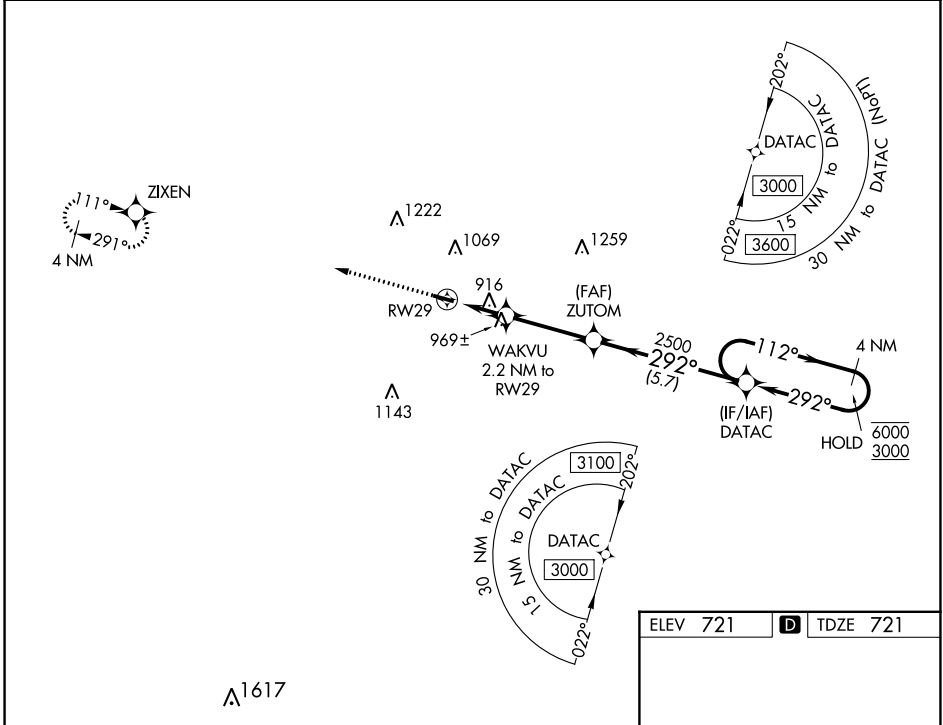
- ▼ Procedure NA at night. Rwy 29 helicopter visibility reduction below 1 SM NA. Use Georgetown altimeter setting; when not received, use Lexington altimeter setting and increase all MDA 40 feet.
- ▲ NA

MISSED APPROACH: Climb to 3000 direct ZIXEN and hold.

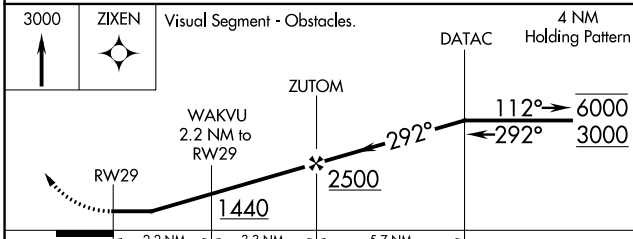
27K AWOS-3  
**119.975**

LEXINGTON APP CON  
**120.15 259.3** (040°-220°)  
**120.75 298.9** (221°-039°)

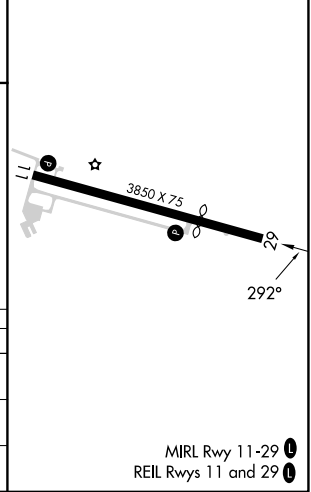
UNICOM  
**122.8** (CTAF) **Ø**



ELEV 721	<b>D</b> TDZE 721
----------	-------------------



CATEGORY	A	B	C	D
LP MDA	1240-1	519 (600-1)		NA
LNAV MDA	1280-1	559 (600-1)		NA
<b>C</b> CIRCLING	1340-1 619 (700-1)	1560-1¼ 839 (900-1¼)		NA



MIRL Rwy 11-29 **Ø**  
 REIL Rvws 11 and 29 **Ø**

SE-1, 08 AUG 2024 to 05 SEP 2024

SE-1, 08 AUG 2024 to 05 SEP 2024