

WAAS CH 53340 W23A	APP CRS 227°	Rwy Idg TDZE 4892 Apt Elev 4892	6370
--	------------------------	---	-------------

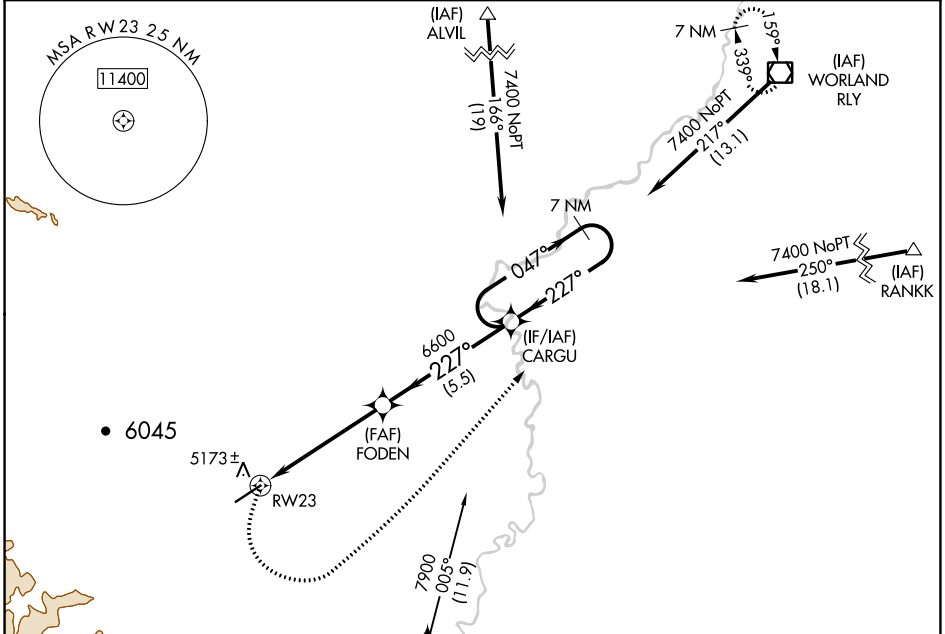
RNAV (GPS) RWY 23

HOT SPRINGS COUNTY (HSG)

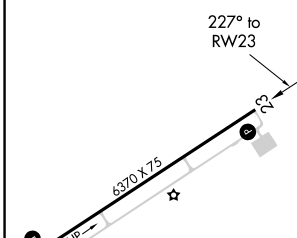
⚠ For uncompensated Baro-VNAV systems, LNAV/VNAV NA below -24°C (-11°F) or above 54°C (130°F). Circling NA northwest of Rwy 5-23. DME/DME RNP-0.3 NA.

⚠ MISSED APPROACH: Climbing left turn to 8400 direct RLY VOR/DME and hold.

AWOS-3PT 121.125	SALT LAKE CENTER 133.25 285.6	UNICOM 122.8 (CTAF) 📻
----------------------------	---	--

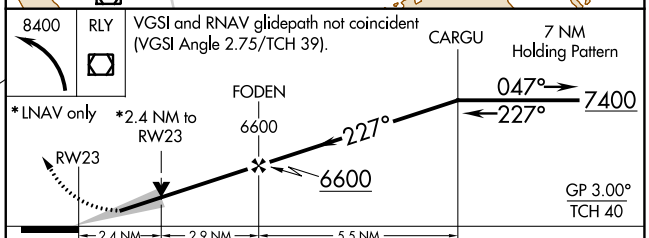


ELEV 4892	TDZE 4892
------------------	------------------



Procedure NA for arrival on BOY VOR/DME airway radials 322 CW 087.

8400 RLY VGSI and RNAV glidepath not coincident (VGSI Angle 2.75/TCH 39).



CATEGORY	A	B	C	D
LPV DA		5382-1¾	490 (500-1¾)	
LNAV/VNAV DA		5577-2½	685 (700-2½)	
LNAV MDA	5620-1	728 (800-1)	5620-2	728 (800-2)
C CIRCLING	5620-1	728 (800-1)	5620-2	5880-3 988 (1000-3)

REIL Rwy 5 and 23 **📻**
MIRL Rwy 5-23 **📻**

NW-1, 08 AUG 2024 to 05 SEP 2024

NW-1, 08 AUG 2024 to 05 SEP 2024