

HI-TACAN X RWY 16

TACAN DYS Chan 63	APCH CRS 169°	Rwy ldg 13,500 TDZE 1790 Arprt Elev 1790
-----------------------------	-------------------------	---

JAL-2 [USAF]

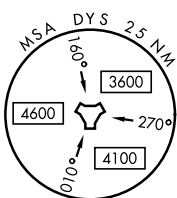
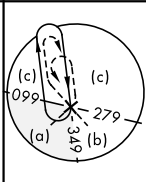
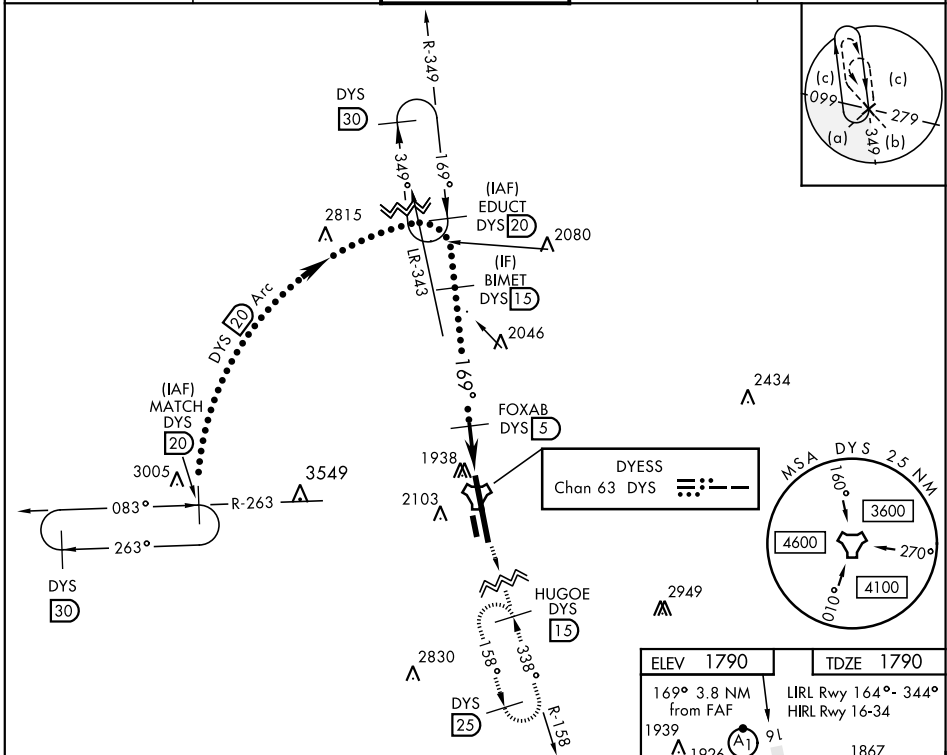
DYESS AFB (KDYS)

* When ALS inop, increase CAT CDE vis to 1 1/4 miles.
 ** Circling to other than Rwy 34 NA

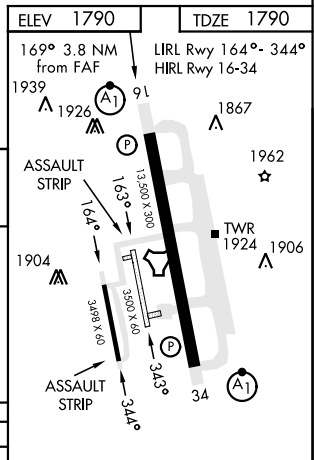
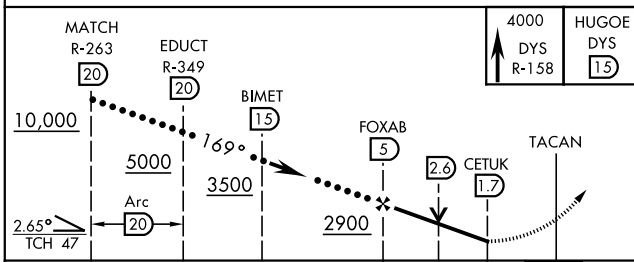


MISSED APPROACH: Climb to 4000 via
 DYS TACAN R-158 to HUGOE and hold.

ATIS ★ 269.175	ABILENE APP CON 125.0 338.3 EAST 127.2 282.3 WEST	DYESS TOWER 133.0 257.675	GND CON 118.35 275.8	ASR
--------------------------	---	-------------------------------------	--------------------------------	-----



EMERG SAFE ALT 100 NM 4600



CATEGORY	C	D	E
S-16*	2220/40	430	(500-34)
CIRCLING**	2460-1 3/4 670 (700-1 3/4)	2460-2 670 (700-2)	2460-2 1/4 670 (700-2 1/4)

FAF to MAP 3.3 NM					
Knots	120	140	160	180	200
Min:Sec	1:39	1:25	1:14	1:06	0:59

HI-TACAN X RWY 16

SC-2, 05 SEP 2024 to 03 OCT 2024

SC-2, 05 SEP 2024 to 03 OCT 2024