

ILS or LOC W RWY 34

LOC I-DYS 109.9	APCH CRS 344°	Rwy Idg 13,500 TDZE 1788 Arprt Elev 1790
---------------------------	-------------------------	---

AL-2 [USAF]

DYESS AFB (KDYS)

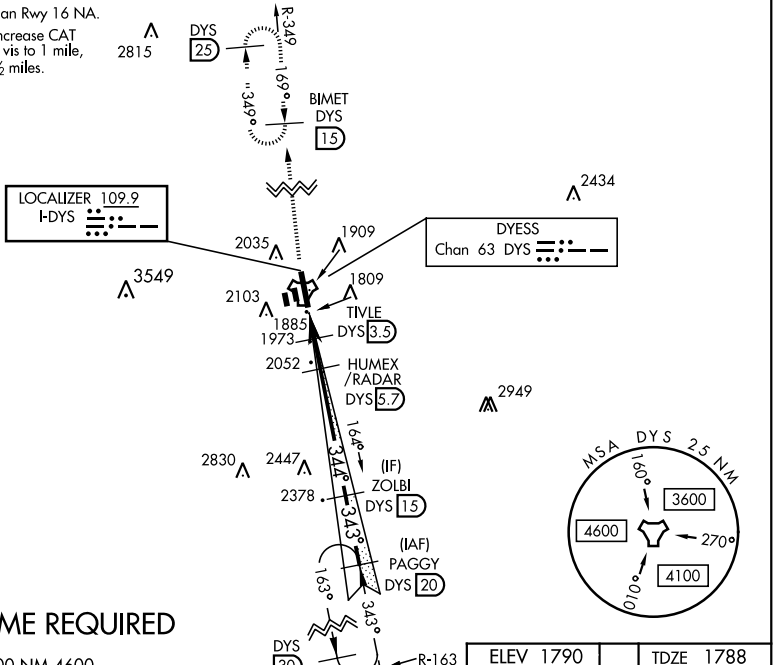
* When ALS inop, increase all CAT RVR to 40 and vis to ¾ mile.
 ** When ALS inop, increase CAT AB RVR to 55 and vis to 1 mile, CAT CDE vis to 1 ½ miles.

ALSF-1

MISSED APPROACH: Climb to 4000 via DYS TACAN R-349 to BIMET and hold.

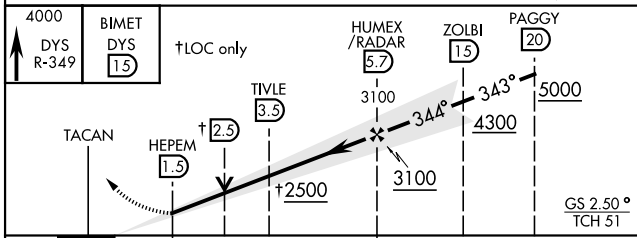
ATIS ★ 269.175	ABILENE APP CON 125.0 338.3 EAST 127.2 282.3 WEST	DYESS TOWER 133.0 257.675	GND CON 118.35 275.8	ASR
--------------------------	---	-------------------------------------	--------------------------------	-----

*** Circling to other than Rwy 16 NA.
 **** When ALS inop, increase CAT AB RVR to 55 and vis to 1 mile, CAT CDE vis to 1 ½ miles.

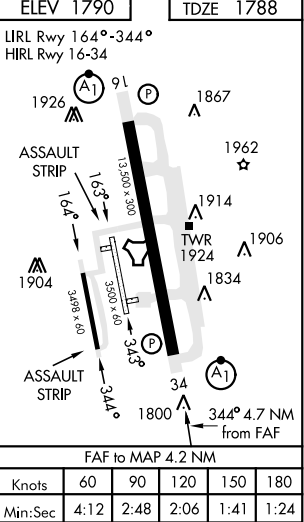


RADAR or DME REQUIRED

EMERG SAFE ALT 100 NM 4600



CATEGORY	A		B		C		D		E	
	LOC only									
S-ILS 34*	1988/24				200		(200-½)			
S-LOC 34**	2240/24	452 (500-½)			2240/45	452 (500-¾)				
CIRCLING***	2300-1	2320-1	2460-1¾	2460-2	2460-2¼	510 (600-1)	530 (600-1)	670 (700-1¾)	670 (700-2)	670 (700-2¼)
	WITHOUT LAST STEPDOWN FIX									
S-LOC 34****	2320/24	532 (600-½)	2320/55		532	(600-1)				
CIRCLING***	2320-1	530 (600-1)	2460-1¾	2460-2	2460-2¼	670 (700-1¾)	670 (700-2)	670 (700-2¼)		



ILS or LOC W RWY 34

SC-2, 05 SEP 2024 to 03 OCT 2024

SC-2, 05 SEP 2024 to 03 OCT 2024