

ABILENE, TEXAS

# VOR/DME RWY 34

VOR/DME TQA <b>111.6</b> Chan <b>53</b>	APCH CRS <b>340°</b>	Rwy ldg <b>13,500</b> TDZE <b>1788</b> Arprt Elev <b>1790</b>
---	-------------------------	---

AL-2 [USAF]

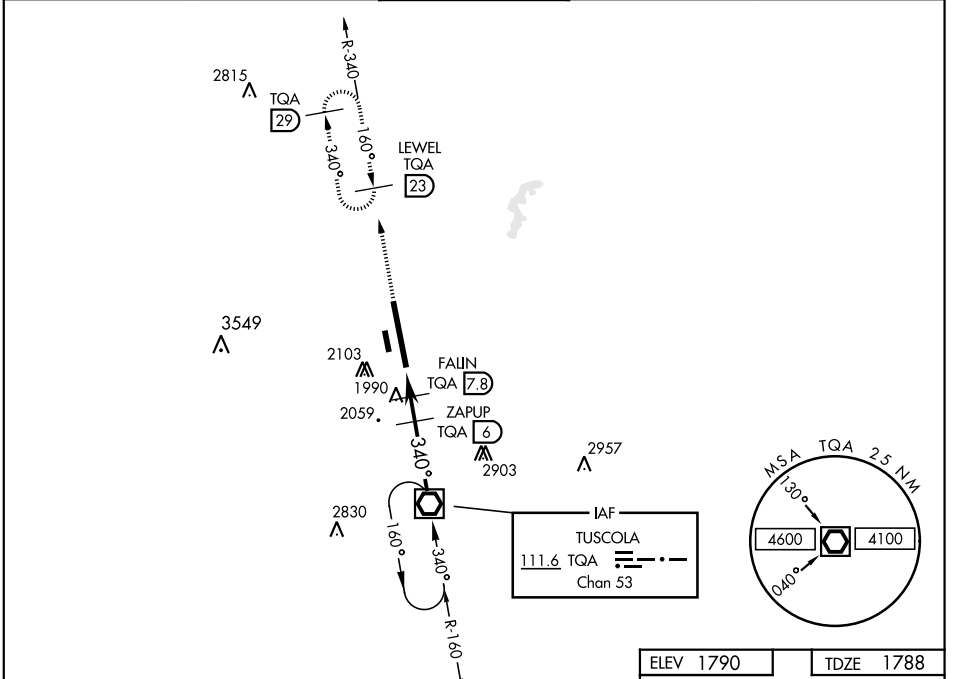
DYESS AFB (KDYS)

\* When ALS inop, increase CAT AB RVR to 55 and vis to 1 mile, CAT CDE RVR vis to 1 3/8 miles.  
 \*\* Circling to other than Rwy 16 NA



MISSED APPROACH: Climb to 4000 via TQA VOR/DME R-340 to LEWEL and hold.

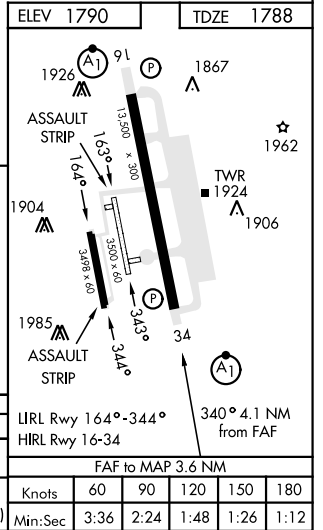
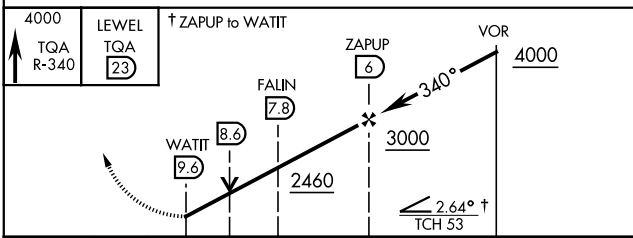
ATIS ★ <b>269.175</b>	ABILENE APP CON <b>125.0 338.3</b> EAST <b>127.2 282.3</b> WEST	DYESS TOWER <b>133.0 257.675</b>	GND CON <b>118.35 275.8</b>	ASR
--------------------------	---	-------------------------------------	--------------------------------	-----



SC-2, 05 SEP 2024 to 03 OCT 2024

SC-2, 05 SEP 2024 to 03 OCT 2024

EMERG SAFE ALT 100 NM 4600



ABILENE, TEXAS

32°25' -99°51'W

DYESS AFB (KDYS)

Amdt 3 10NOV16

# VOR/DME RWY 34