

ALAMOGORDO, NEW MEXICO

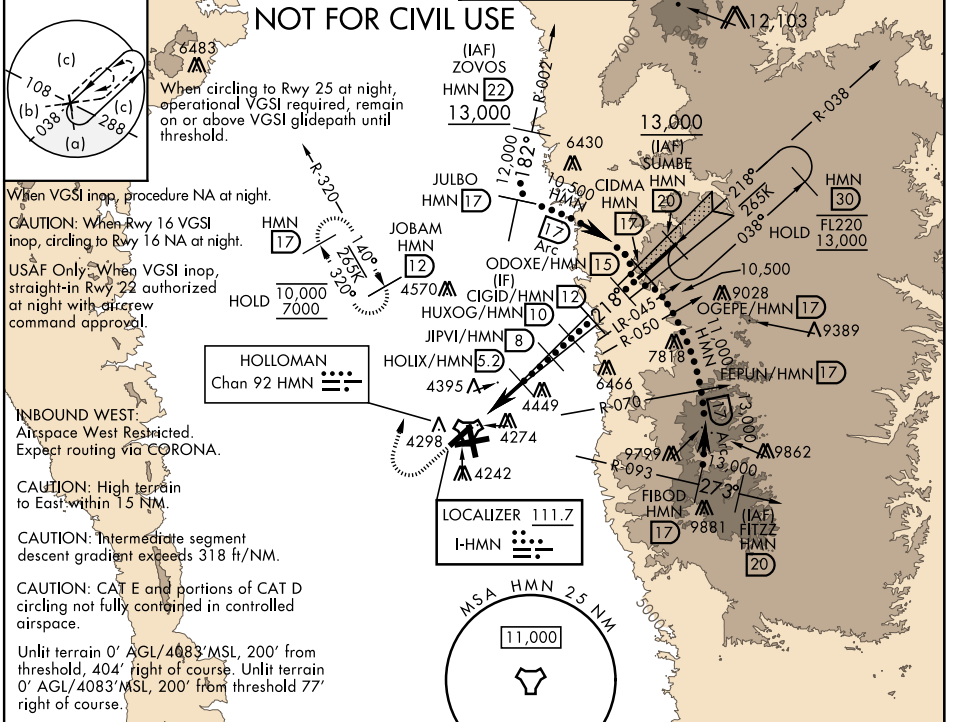
# HI-ILS or LOC RWY 22

LOC I-HMN <b>111.7</b>	APCH CRS <b>218°</b>	Rwy Idg <b>10,578</b>
		TDZE <b>4083</b>
		Arprt Elev <b>4093</b>

AL-7 [USAF]

HOLLOMAN AFB (KHMM)

RADAR or DME required. *When ALS inop, increase vis to 3/4 miles. **When ALS inop, increase vis to 1 1/4 miles.		ALSF-1 	MISSED APPROACH: Climb straight ahead to 7000, passing 5000 turn right and intercept HMN R-320 outbound to JOBAM and hold.		
ATIS ★ <b>273.5</b>	ALBUQUERQUE CENTER <b>132.65 257.6</b>	APP CON <b>120.6 269.225</b>	TOWER ★ <b>119.3 254.4</b>	GND CON <b>127.05 275.8</b>	CLNC DEL <b>126.7 289.4</b>



When VGSi inop, procedure NA at night.

CAUTION: When Rwy 16 VGSi inop, circling to Rwy 16 NA at night.

USAF Only: When VGSi inop, straight-in Rwy 22 authorized at night with aircrew command approval.

INBOUND WEST: Airspace West Restricted. Expect routing via CORONA.

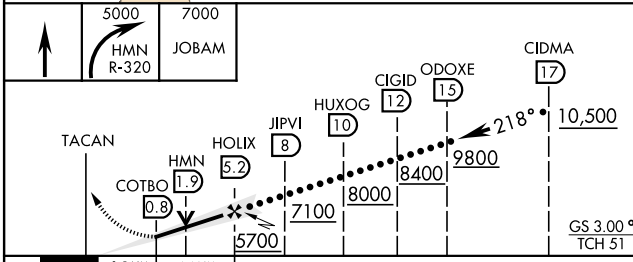
CAUTION: High terrain to East within 15 NM.

CAUTION: Intermediate segment descent gradient exceeds 318 ft/NM.

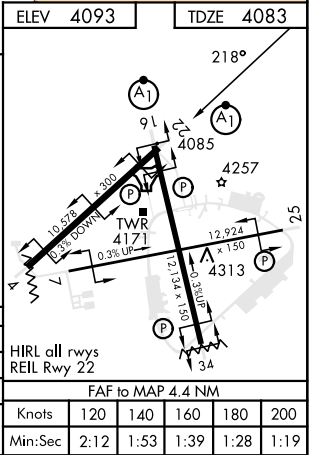
CAUTION: CAT E and portions of CAT D circling not fully contained in controlled airspace.

Unlit terrain 0' AGL/4083' MSL, 200' from threshold, 404' right of course. Unlit terrain 0' AGL/4083' MSL, 200' from threshold 77' right of course.

EMERG SAFE ALT 100 NM 14,200



CATEGORY	C	D	E
S-ILS 22*	4283-1/2	200 (200-1/2)	
S-LOC 22**	4680-1 1/4	597 (600-114)	
CIRCLING	4680-1 3/4 587 (600-134)	4740-2 647 (700-2)	4780-2 1/2 687 (700-2 1/2)



ALAMOGORDO, NEW MEXICO

32°52'N - 106°06'W

HOLLOMAN AFB (KHMM)

Amtd 2 10AUG23

# HI-ILS or LOC RWY 22

SW-1, 05 SEP 2024 to 03 OCT 2024

SW-1, 05 SEP 2024 to 03 OCT 2024