

HI-TACAN RWY 16

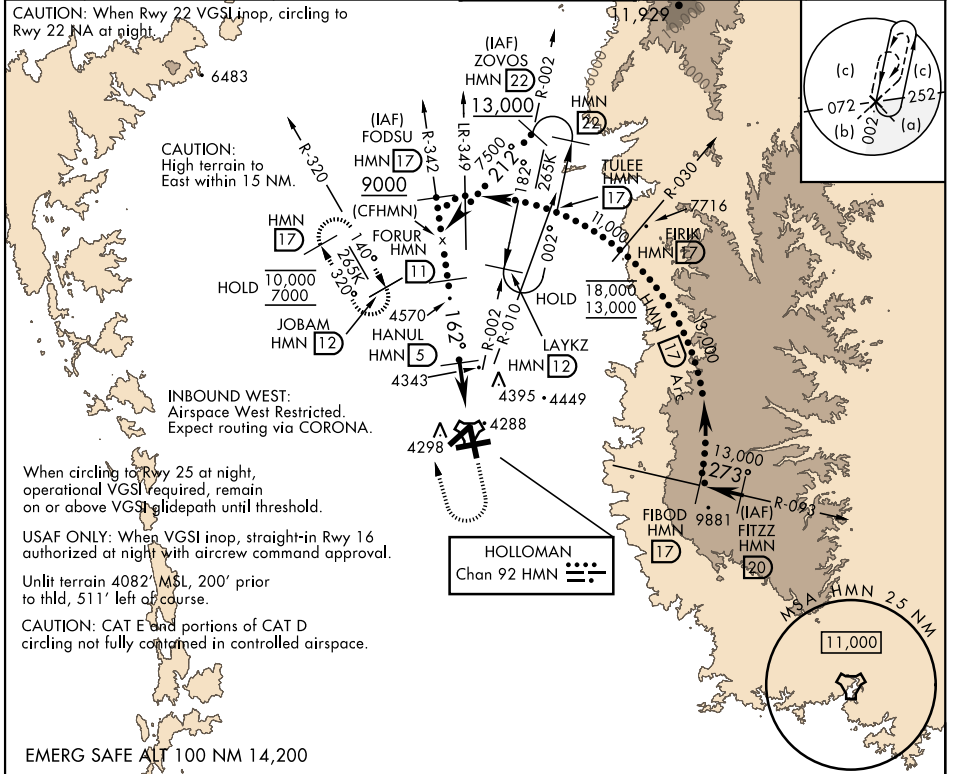
TACAN HMN Chan 92	APCH CRS 162°	Rwy ldg 12,134 TDZE 4083 Arprt Elev 4093	AL-7 [USAF]	HOLLOMAN AFB (KHMN)
-----------------------------	-------------------------	---	-------------	---------------------

▼ * When ALS inop, increase CAT CDE vis to 1½ miles.
When VGSi inop, procedure NA at night.

ALS-F-1

MISSED APPROACH: Climb straight ahead to 7000, passing 5000 turn right and intercept HMN R-320 outbound to JOBAM and hold.

ATIS * 273.5	ALBUQUERQUE CENTER 132.65 257.6	APP CON 120.6 269.225	TOWER * 119.3 254.4	GND CON 127.05 275.8	CLNC DEL 126.7 289.4
------------------------	---	---------------------------------	-------------------------------	--------------------------------	--------------------------------



FORUR 11			5000		7000		ELEV 4093		TDZE 4083	
FORUR 11			HANUL 5		TACAN		162° to TACAN		JOBAM	
7500			5600		JEKRA 0.3		A1 91		A1 4257	
162°			2.91° TCH 50		4.2 NM		0.3% UP		0.3% DOWN	
CATEGORY			C		D		E		TWR 4171	
S-16 *			4620-1		537 (600-1)				12,925	
CIRCLING			4680-1½ 587 (600-1½)		4740-2 647 (700-2)		4780-2½ 687 (700-2½)		4313	

HI-TACAN RWY 16

SW-1, 05 SEP 2024 to 03 OCT 2024

SW-1, 05 SEP 2024 to 03 OCT 2024