

# HI-TACAN RWY 22

TACAN HMN Chan <b>92</b>	APCH CRS <b>214°</b>	Rwy ldg <b>10,578</b> TDZE <b>4083</b> Arpt Elev <b>4093</b>
-----------------------------	-------------------------	--

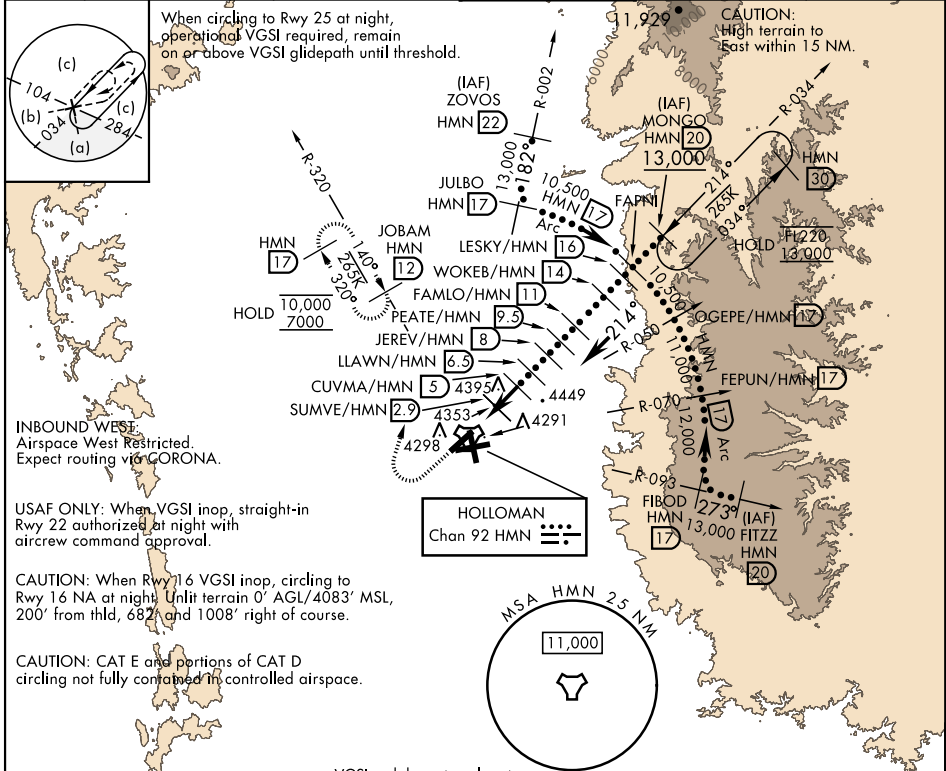
AL-7 [USAF]

HOLLOMAN AFB (KHMN)

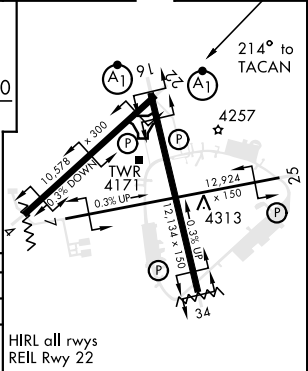
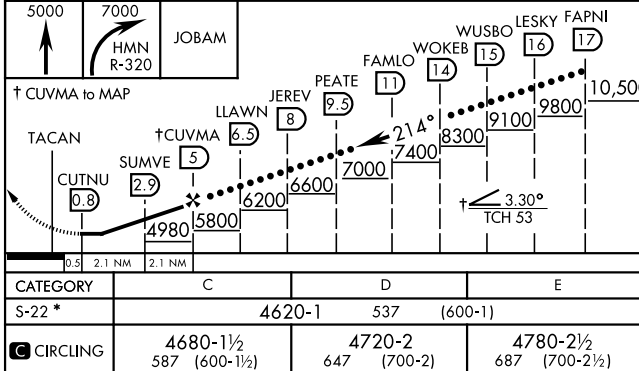
▼ \*When ALS inop, increase CAT CDE vis to 1½ miles.  
When VGSI inop, procedure NA at night.

ALSF-1 MISSED APPROACH: Climb straight ahead to 7000, passing 5000 turn right and intercept HMN TACAN R-320 outbound to JOBAM and hold.

ATIS ★ <b>273.5</b>	ALBUQUERQUE CENTER <b>132.65 257.6</b>	APP CON <b>120.6 269.225</b>	TOWER ★ <b>119.3 254.4</b>	GND CON <b>127.05 275.8</b>	CLNC DEL <b>126.7 289.4</b>
------------------------	---	---------------------------------	-------------------------------	--------------------------------	--------------------------------



EMERG SAFE ALT 100 NM 14,200      VGSI and descent angle not coincident, VGSI angle 2.50°/TCH 53.      ELEV 4093      TDZE 4083



# HI-TACAN RWY 22

SW-1, 05 SEP 2024 to 03 OCT 2024

SW-1, 05 SEP 2024 to 03 OCT 2024