

ADYOS THREE DEPARTURE (RNAV)

ALBUQUERQUE INTL SUNPORT (ABQ)
ALBUQUERQUE, NEW MEXICO

AL-12 (FAA)

SW-1, 05 SEP 2024 to 03 OCT 2024

DEPARTURE ROUTE DESCRIPTION

TAKEOFF RUNWAY 21: Climb heading 214° to 5860, then direct ASTAH, cross ASTAH at or below 9000, then on depicted route to ADYOS. Thence. . . .

TAKEOFF RUNWAY 26: Climb heading 259° to 5860, then direct ABQ VORTAC, then on track 262° to ADYOS. Thence. . . .

. . . (transition). Maintain FL200, expect filed altitude ten minutes after departure.

GALLUP TRANSITION (ADYOS3.GUP)

ZUNI TRANSITION (ADYOS3.ZUN)

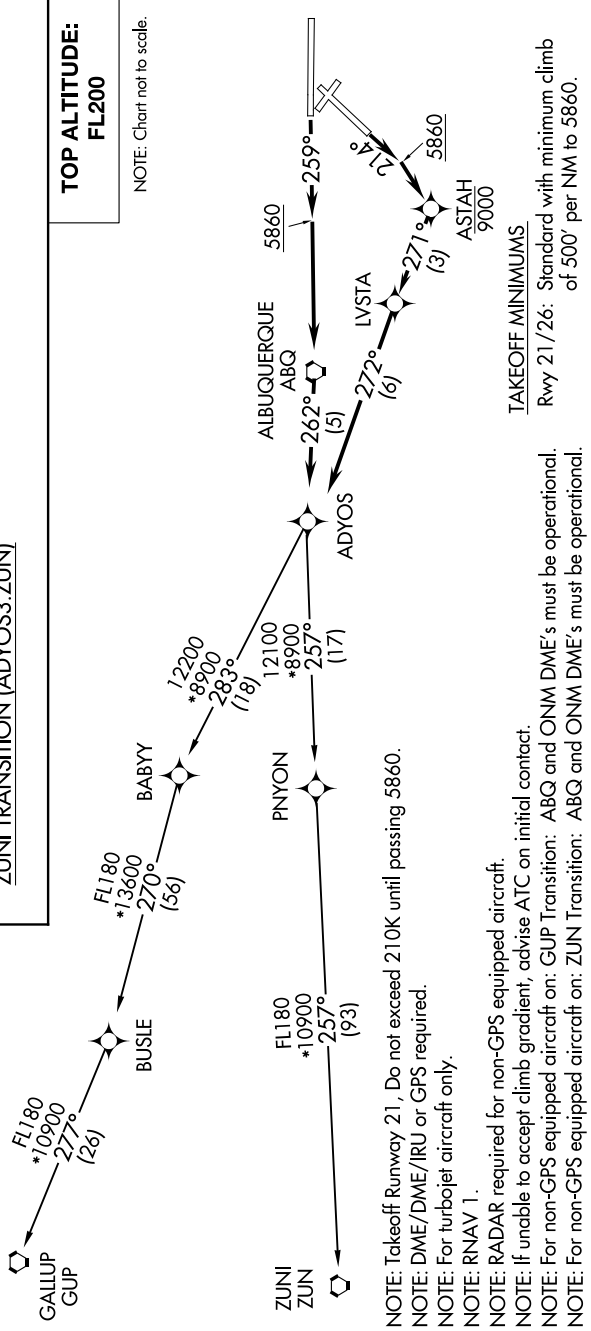
TOP ALTITUDE:
FL200

NOTE: Chart not to scale.

D-ATIS
118.0 257.7
CLNC DEL
119.2 259.3
CPDC
GND CON
121.9 348.6
ALBUQUERQUE TOWER
120.3 351.9
ALBUQUERQUE DEP CON
127.4 253.5

ADYOS THREE DEPARTURE (RNAV)

(ADYOS3.ADYOS) 25JUN15



NOTE: Takeoff Runway 21, Do not exceed 210K until passing 5860.
NOTE: DME/DME/IRU or GPS required.
NOTE: For turbojet aircraft only.
NOTE: RNAV 1.
NOTE: RADAR required for non-GPS equipped aircraft.
NOTE: If unable to accept climb gradient, advise ATC on initial contact.
NOTE: For non-GPS equipped aircraft on: GUP Transition: ABQ and ONM DME's must be operational.
NOTE: For non-GPS equipped aircraft on: ZUN Transition: ABQ and ONM DME's must be operational.

TAKEOFF MINIMUMS
Rwy 21/26: Standard with minimum climb of 500' per NM to 5860.

SW-1, 05 SEP 2024 to 03 OCT 2024

ALBUQUERQUE, NEW MEXICO
ALBUQUERQUE INTL SUNPORT (ABQ)