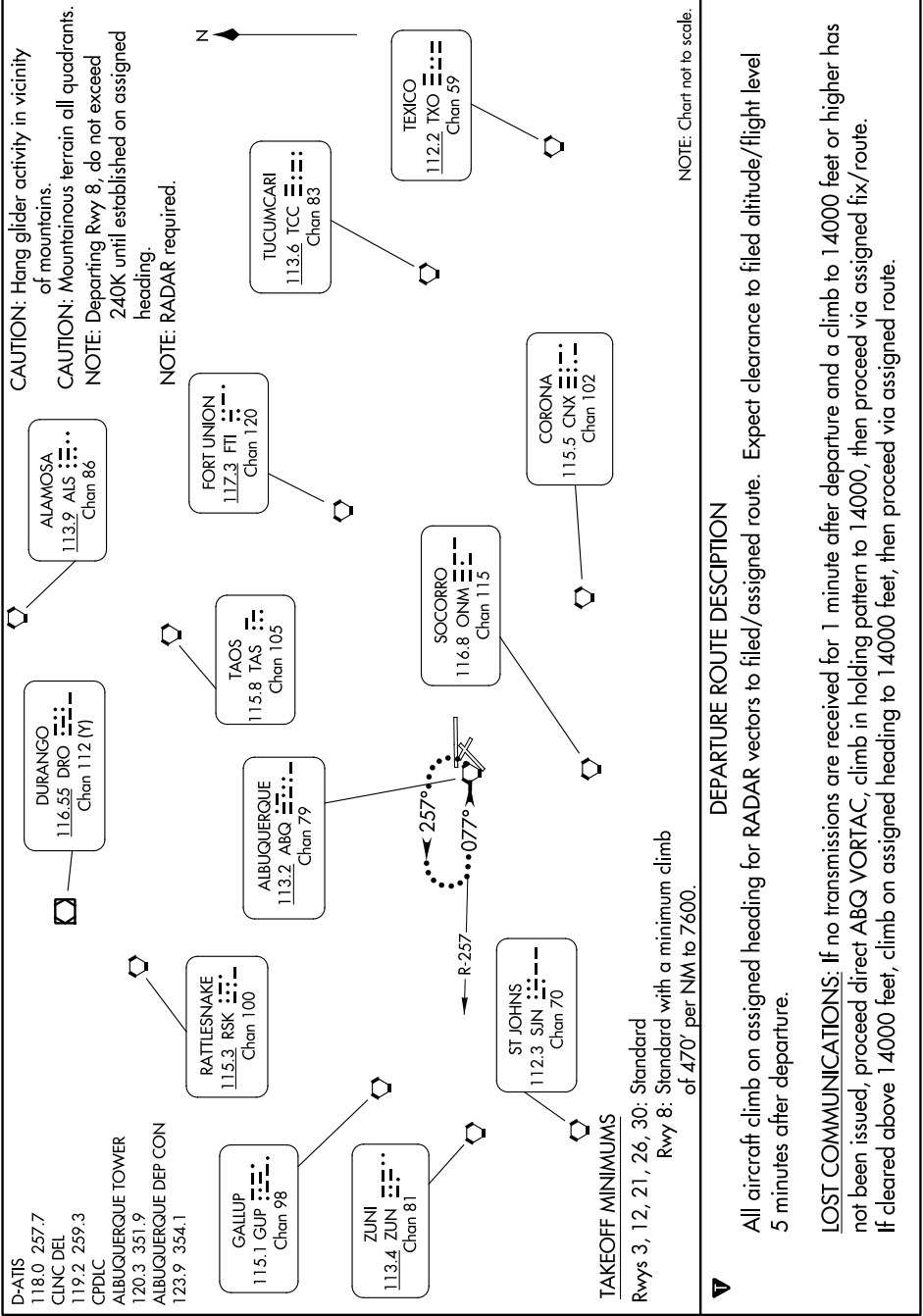


ALBUQUERQUE THREE DEPARTURE

SW-1, 05 SEP 2024 to 03 OCT 2024



CAUTION: Hang glider activity in vicinity of mountains.
CAUTION: Mountainous terrain all quadrants.
NOTE: Departing Rwy 8, do not exceed 240K until established on assigned heading.
NOTE: RADAR required.

NOTE: Chart not to scale.

DEPARTURE ROUTE DESCRIPTION

All aircraft climb on assigned heading for RADAR vectors to filed/assigned route. Expect clearance to filed altitude/flight level 5 minutes after departure.

LOST COMMUNICATIONS: If no transmissions are received for 1 minute after departure and a climb to 14000 feet or higher has not been issued, proceed direct ABQ VORTAC, climb in holding pattern to 14000, then proceed via assigned fix/route. If cleared above 14000 feet, climb on assigned heading to 14000 feet, then proceed via assigned route.

D-ATIS
 118.0 257.7
 CLNC DEL
 119.2 259.3
 CPDLC
ALBUQUERQUE TOWER
 120.3 351.9
ALBUQUERQUE DEP CON
 123.9 354.1

TAKEOFF MINIMUMS
 Rwys 3, 12, 21, 26, 30: Standard
 Rwy 8: Standard with a minimum climb of 470' per NM to 7600.

SW-1, 05 SEP 2024 to 03 OCT 2024