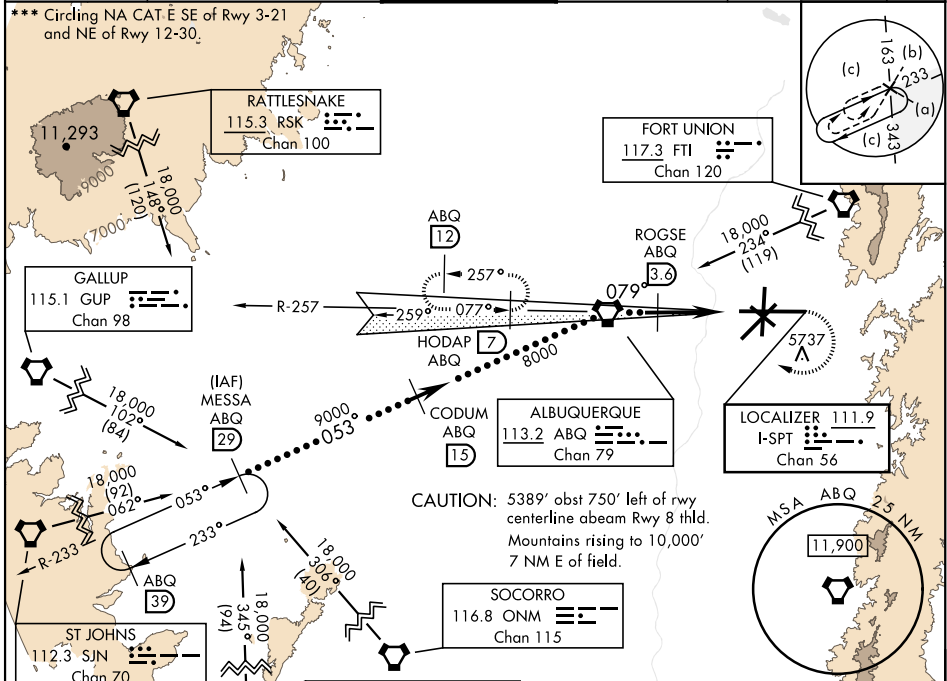


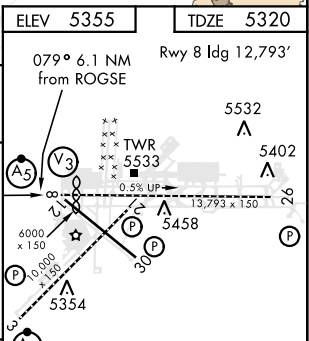
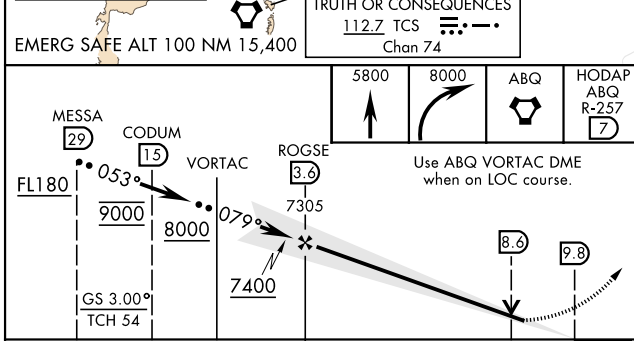
HI-ILS or LOC RWY 8

LOC I-SPT 111.9	APCH CRS 079°	Rwy ldg 12,793 TDZE 5320 Arprt Elev 5355	AL-12 [USAF]	ALBUQUERQUE INTL SUNPORT (KABQ)
DME required. * When ALS inop, increase RVR to 40 and vis to 3/4 mile. ** When ALS inop, increase RVR to 60 and vis to 1 1/2 mile.			MALSR 	MISSED APPROACH: Climb to 5800 then climbing right turn to 8000 direct ABQ VORTAC and ABQ R-257 to HODAP/ABQ 7 DME and hold.

ATIS 118.0 257.7	APP CON 123.9 354.1	TOWER 120.3 351.9	GND CON 121.9 348.6	CLNC DEL 119.2 259.3	ASR
----------------------------	-------------------------------	-----------------------------	-------------------------------	--------------------------------	-----



CAUTION: 5389' obst 750' left of rwy centerline abeam Rwy 8 thld. Mountains rising to 10,000' 7 NM E of field.



CATEGORY	C	D	E
S-ILS 8 *	5529/24	209 (300-1/2)	
S-LOC 8 **	5740/40	420 (500-3/4)	
CIRCLING ***	5920-1 1/2 (600-1 1/2)	6460-3	1105 (1200-3)

REIL Rwy 3-21, 26, and 30					
HIRL Rwy 3-21 and 8-26					
MIRL Rwy 12-30					
TDZL/CL Rwy 3 and 8					
FAF to MAP 6.1 NM					
Knots	120	140	160	180	200
Min:Sec	3:03	2:37	2:17	2:02	1:50

HI-ILS or LOC RWY 8

SW-1, 05 SEP 2024 to 03 OCT 2024

SW-1, 05 SEP 2024 to 03 OCT 2024