

LOC/DME I-SPT <b>111.9</b> Chan <b>56</b>	APP CRS <b>079°</b>	Rwy Idg <b>12793</b> TDZE <b>5320</b> Apt Elev <b>5355</b>
---	------------------------	--

# ILS or LOC RWY 8

## ALBUQUERQUE INTL SUNPORT (ABQ)

DME required. RNAV 1 - GPS or RADAR required for procedure entry.

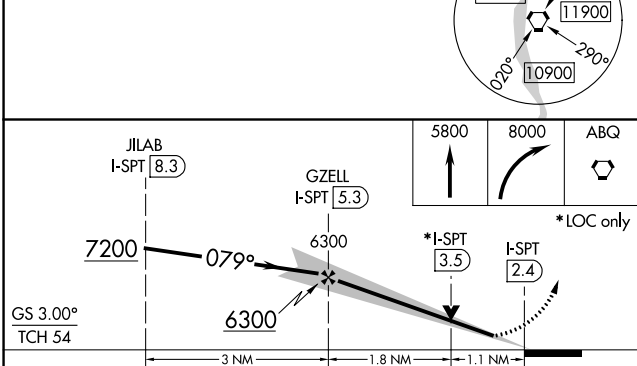
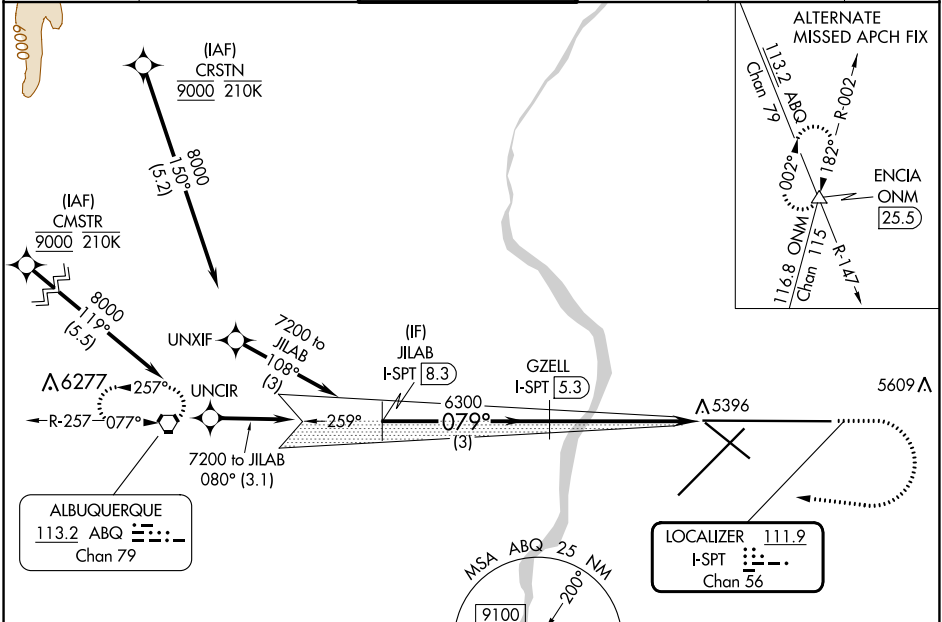
For inop ALS, increase S-LOC 8 Cat C and D visibility to RVR 6000.

ASR

MALSR

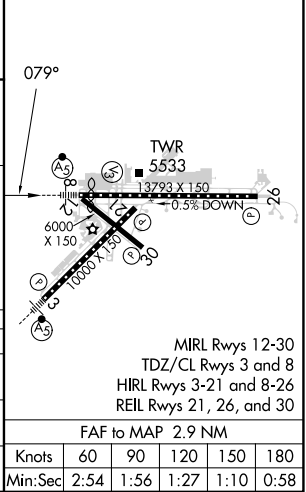
MISSED APPROACH: Climb to 8000 then climbing right turn to 8000 direct ABQ VORTAC and hold.

D-ATIS <b>118.0 257.7</b>	ALBUQUERQUE APP CON <b>123.9 354.1</b>	ALBUQUERQUE TOWER <b>120.3 351.9</b>	GND CON <b>121.9 348.6</b>	CLNC DEL <b>119.2 259.3</b>	CPDLC
------------------------------	---	---	-------------------------------	--------------------------------	-------



ELEV 5355	TDZE 5320
-----------	-----------

CATEGORY	A	B	C	D
S-ILS 8	5527/18 207 (200-½)			
S-LOC 8	5720/24	400 (400-½)	5720/40	400 (400-¾)
CIRCLING	5840-1 485 (500-1)	5920-1 565 (600-1)	5940-1½ 585 (600-1½)	NA



SW-1, 05 SEP 2024 to 03 OCT 2024

SW-1, 05 SEP 2024 to 03 OCT 2024