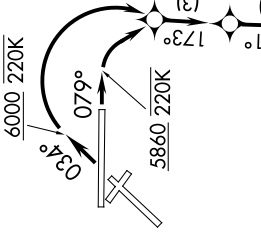
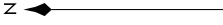


MNZNO THREE DEPARTURE (RNAV)

D-ATIS 118.0 257.7
 CLNC DEL 119.2 259.3
 CPDLC
 GND CON 121.9 348.6
 ALBUQUERQUE TOWER 120.3 351.9
 ALBUQUERQUE DEP CON 123.9 354.1

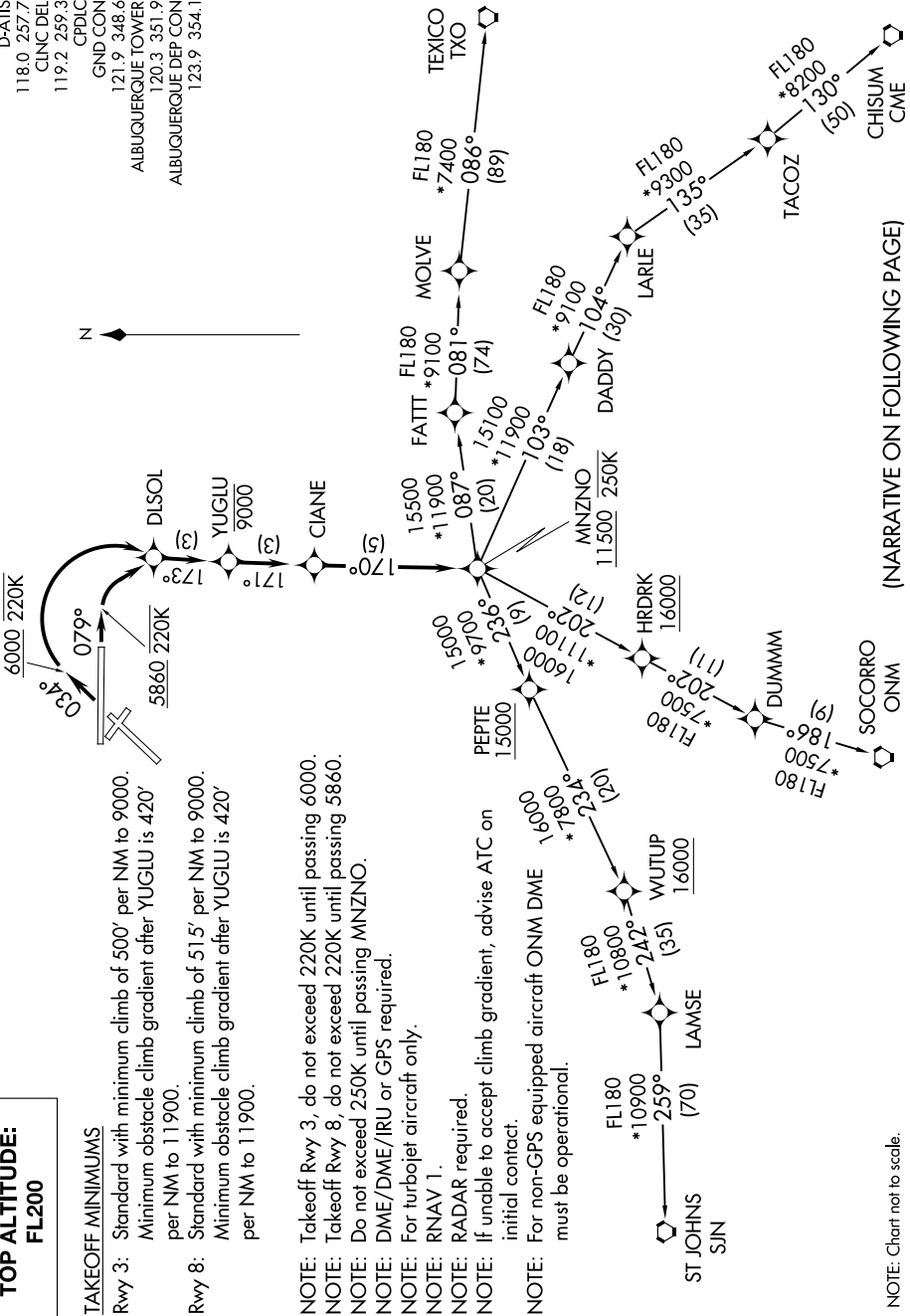


TOP ALTITUDE:
FL200

TAKEOFF MINIMUMS

- Rwy 3: Standard with minimum climb of 500' per NM to 9000. Minimum obstacle climb gradient after YUGLU is 420' per NM to 11900.
- Rwy 8: Standard with minimum climb of 515' per NM to 9000. Minimum obstacle climb gradient after YUGLU is 420' per NM to 11900.

- NOTE: Takeoff Rwy 3, do not exceed 220K until passing 6000.
- NOTE: Takeoff Rwy 8, do not exceed 220K until passing 5860.
- NOTE: Do not exceed 250K until passing MNZNO.
- NOTE: DME/DME/IRU or GPS required.
- NOTE: For turboprop aircraft only.
- NOTE: RNAV 1.
- NOTE: RADAR required.
- NOTE: If unable to accept climb gradient, advise ATC on initial contact.
- NOTE: For non-GPS equipped aircraft ONM DME must be operational.



(NARRATIVE ON FOLLOWING PAGE)

NOTE: Chart not to scale.

MNZNO THREE DEPARTURE (RNAV)