

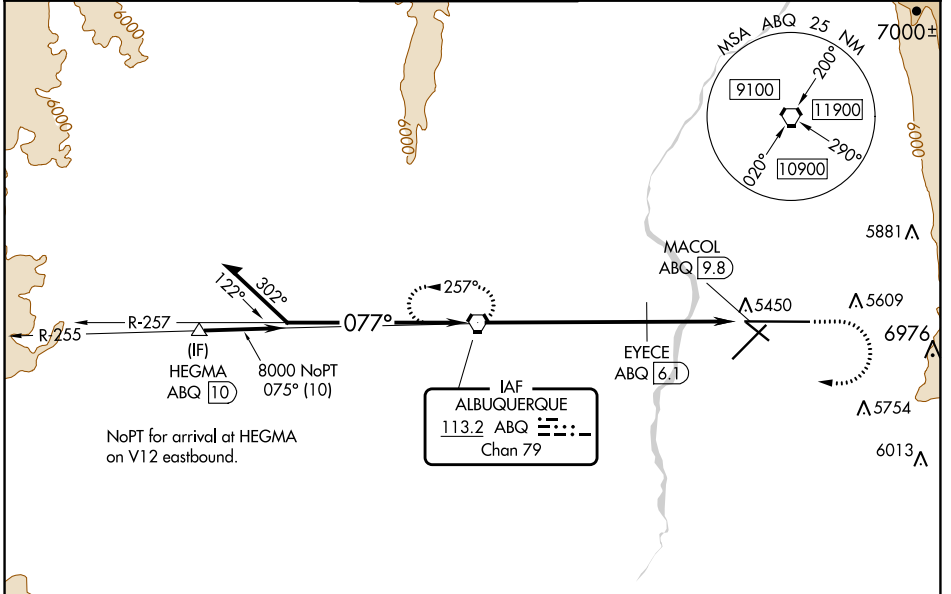
VORTAC ABQ 113.2 Chan 79	APP CRS 077°	Rwy Idg 12793 TDZE 5320 Apt Elev 5355
---------------------------------------	------------------------	--

VOR RWY 8

ALBUQUERQUE INTL SUNPORT (ABQ)

<p>EYECE FIX MINIMUMS: For inop ALS, increase S-8 Cat C/D/E visibility to RVR 5500. For inop ALS, increase S-8 Cat E visibility to 3 SM. Circling Cat E NA southeast of Rwy 3-21 and northeast of Rwy 12-30.</p>	<p>MALS R</p>	<p>MISSED APPROACH: Climb to 5800 then climbing right turn to 8000 direct ABQ VORTAC and hold.</p>

D-ATIS 118.0 257.7	ALBUQUERQUE APP CON 123.9 354.1	ALBUQUERQUE TOWER 120.3 351.9	GND CON 121.9 348.6	CLNC DEL 119.2 259.3	CPDLC
------------------------------	---	---	-------------------------------	--------------------------------	-------



ELEV 5355					TDZE 5320					
<p>Remain within 15 NM</p> <p>8200</p> <p>257°</p> <p>077°</p> <p>8000</p> <p>6380</p> <p>6.1 NM</p> <p>2.6 NM</p> <p>1.1 NM</p>					<p>5800</p> <p>8000</p> <p>ABQ</p> <p>EYECE ABQ [6.1]</p> <p>ABQ [8.7]</p> <p>MACOL ABQ [9.8]</p>					
CATEGORY	A	B	C	D	E					
S-8	6380/40 1060 (1100-3/4)	6380/55 1060 (1100-1)	6380-2 1/2 1060 (1100-2 1/2)							
CIRCLING	6380-1 1/4 1025 (1100-1 1/4)	6380-1 1/2 1025 (1100-1 1/2)	6380-3 1105 (1100-3)	6460-3 1105 (1200-3)	7460-3 2105 (2200-3)					
EYECE FIX MINIMUMS										
S-8	5700/24	380 (400-1/2)	5700/40 380 (400-3/4)							
CIRCLING	5840-1 485 (500-1)	5920-1 565 (600-1)	5940-1 1/2 585 (600-1 1/2)	6460-3 1105 (1200-3)	7460-3 2105 (2200-3)					

