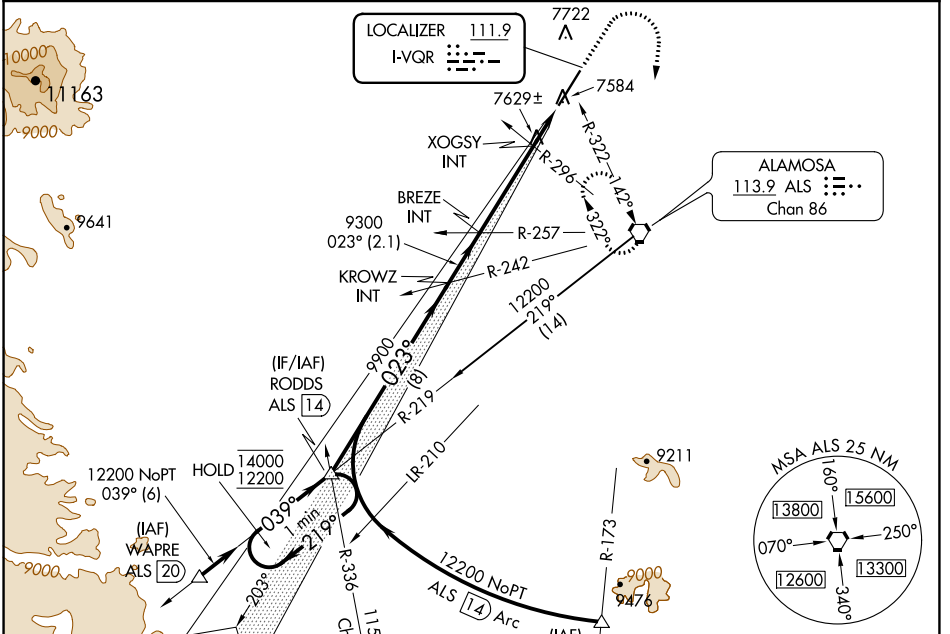


LOC I-VQR 111.9	APP CRS 023°	Rwy ldg 8519
		TDZE 7540
		Apt Elev 7540

ILS or LOC RWY 2

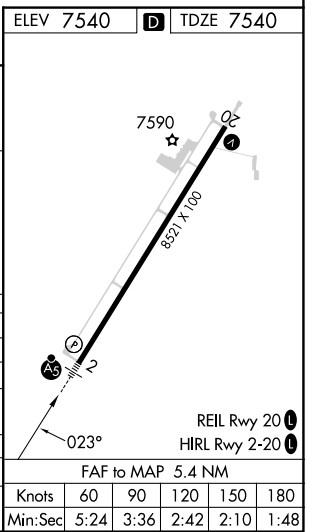
SAN LUIS VALLEY RGNL/BERGMAN FLD (ALS)

<p>NA For inop ALS, increase S-LOC 2 Cats C/D visibility to 1 3/8 SM.</p> <p>-26°C</p>	<p>MALSR</p>	<p>MISSED APPROACH: Climb to 8700 then climbing right turn to 11000 direct ALS VORTAC and hold, continue climb in hold to 11000.</p>
<p>ASOS 135.175</p>	<p>DENVER CENTER 128.375 379.95</p>	<p>UNICOM 122.8 (CTAF)</p>



Procedure NA for arrivals at WAPRE on V368 southwest bound.

One Minute Holding Pattern	RODDS ALS 14	KROWZ INT	BREZE INT	XOGSY INT	ALS
14000 ← 219°	12200 039°	9900	9300	8040	
GS 3.00°					
TCH 48					
	8 NM	2.1 NM	3.6 NM	1.7 NM	
CATEGORY	A	B	C	D	
S-ILS 2	7740-1/2		200 (200-1/2)		
S-LOC 2	8040-1/2 500 (500-1/2)		8040-1 500 (500-1)		
CIRCLING	8040-1 500 (500-1)		8080-1 1/2 540 (600-1 1/2) 8100-2 560 (600-2)		
XOGSY FIX MINIMUMS (DUAL VOR RECEIVERS REQUIRED)					
S-LOC 2	7880-1/2 340 (400-1/2)				
CIRCLING	8040-1 500 (500-1)		8080-1 1/2 540 (600-1 1/2) 8100-2 560 (600-2)		



SW-1, 05 SEP 2024 to 03 OCT 2024

SW-1, 05 SEP 2024 to 03 OCT 2024