

VORTAC ALS 113.9 Chan 86	APP CRS 142°	Rwy Idg TDZE Apt Elev 7540	N/A N/A 7540
--	------------------------	--	---

VOR-B

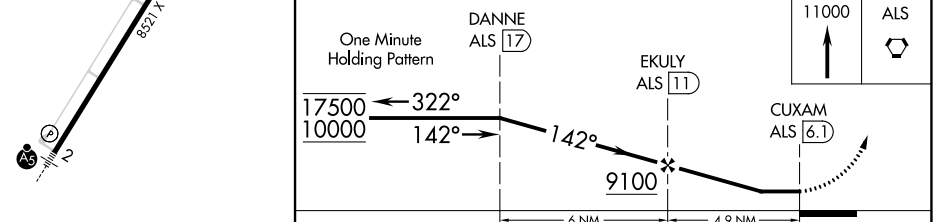
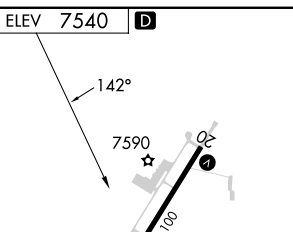
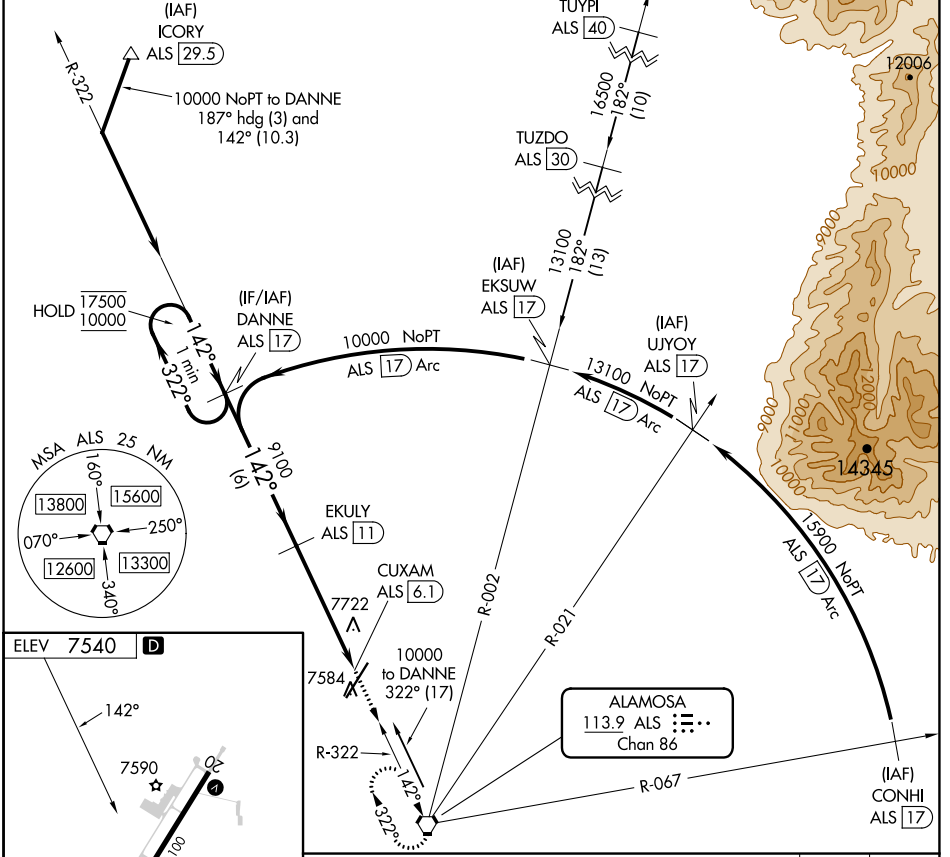
SAN LUIS VALLEY RGNL/BERGMAN FLD (ALS)

DME required. RADAR required for arrivals at TUYPI.

▽
* -26°C

MISSED APPROACH: Climb to 11000 direct ALS VORTAC and hold, continue climb-in-hold to 11000.

ASOS 135.175	DENVER CENTER 128.375 379.95	UNICOM 122.8 (CTAF) 0
------------------------	--	---------------------------------



REIL Rwy 20 0	HIRL Rwy 2-20 0	CATEGORY	A	B	C	D
		C CIRCLING	8040-1	500 (500-1)	8080-1½ 540 (600-1½)	8100-2 560 (600-2)

SW-1, 05 SEP 2024 to 03 OCT 2024

SW-1, 05 SEP 2024 to 03 OCT 2024