

# JUNPR SIX DEPARTURE (RNAV)

AUGUSTA, GEORGIA

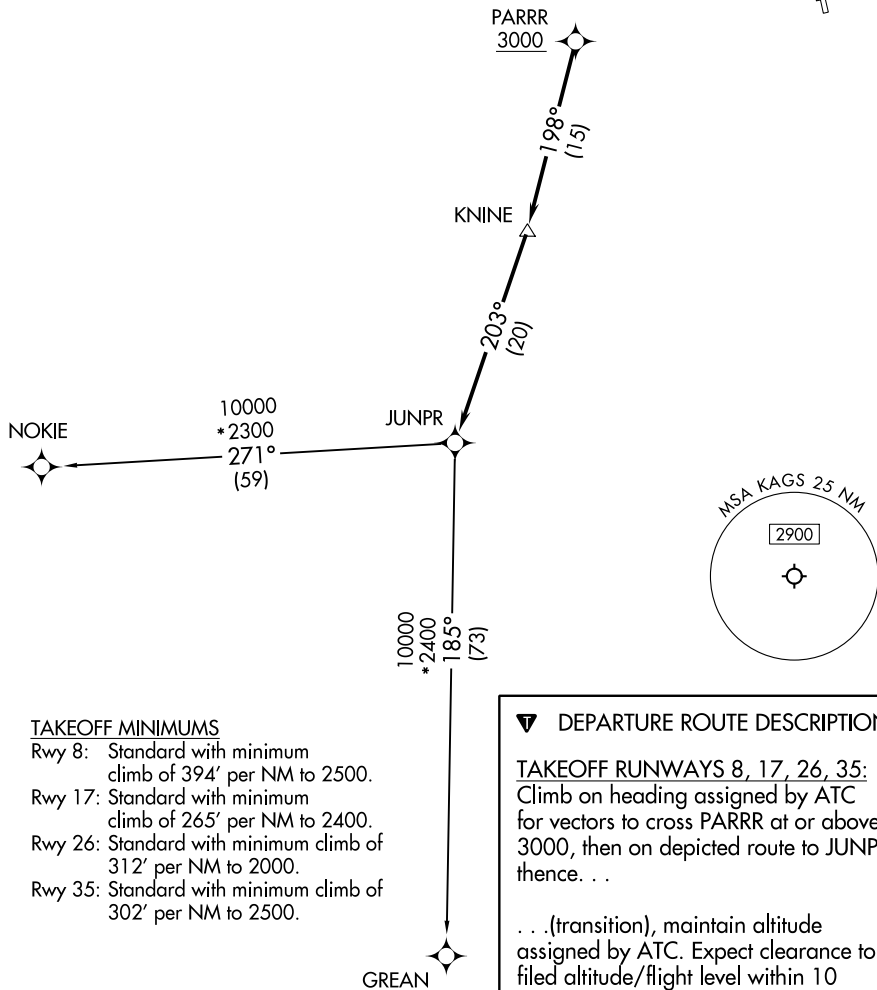
**TOP ALTITUDE:  
ASSIGNED BY ATC**

RNAV 1 - DME/DME/IRU or GPS required.

RADAR required.

AUGUSTA DEP CON ★  
126.8 270.3  
CLNC DEL  
118.65  
AUGUSTA TOWER ★  
118.7 (CTAF) 239.3

NOTE: Do not exceed 250K until advised by ATC.



### TAKEOFF MINIMUMS

- Rwy 8: Standard with minimum climb of 394' per NM to 2500.
- Rwy 17: Standard with minimum climb of 265' per NM to 2400.
- Rwy 26: Standard with minimum climb of 312' per NM to 2000.
- Rwy 35: Standard with minimum climb of 302' per NM to 2500.

### ▼ DEPARTURE ROUTE DESCRIPTION

**TAKEOFF RUNWAYS 8, 17, 26, 35:**  
Climb on heading assigned by ATC for vectors to cross PARRR at or above 3000, then on depicted route to JUNPR, thence. . .

. . . (transition), maintain altitude assigned by ATC. Expect clearance to filed altitude/flight level within 10 minutes after departure.

GREAN TRANSITION (JUNPR6.GREAN)  
NOKIE TRANSITION (JUNPR6.NOKIE)

NOTE: Chart not to scale.

# JUNPR SIX DEPARTURE (RNAV)

(JUNPR6..JUNPR) 14JUL22

AUGUSTA, GEORGIA

AUGUSTA RGNL AT BUSH FLD (AGS)

SE-4, 05 SEP 2024 to 03 OCT 2024

SE-4, 05 SEP 2024 to 03 OCT 2024