

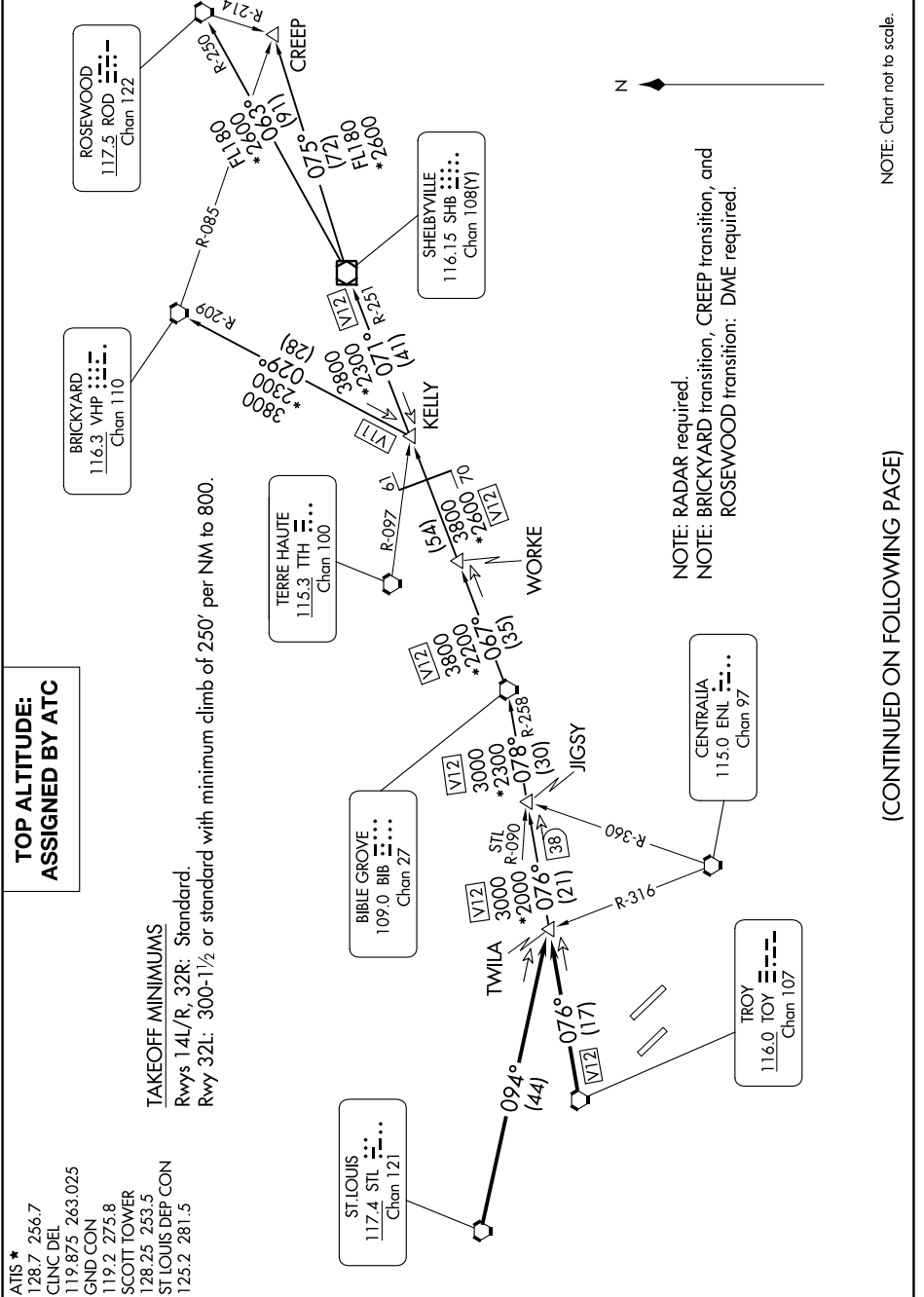
EC-3, 05 SEP 2024 to 03 OCT 2024

### TOP ALTITUDE: ASSIGNED BY ATC

ATIS \* 128.7 256.7  
 CLNC DEL 119.875 263.025  
 GND CON 119.2 275.8  
 SCOTT TOWER 128.25 253.5  
 ST LOUIS DEP CON 125.2 281.5

### TAKEOFF MINIMUMS

Rwys 14L/R, 32R: Standard.  
 Rwy 32L: 300-1/2 or standard with minimum climb of 250' per NM to 800.



(CONTINUED ON FOLLOWING PAGE)

NOTE: Chart not to scale.

EC-3, 05 SEP 2024 to 03 OCT 2024