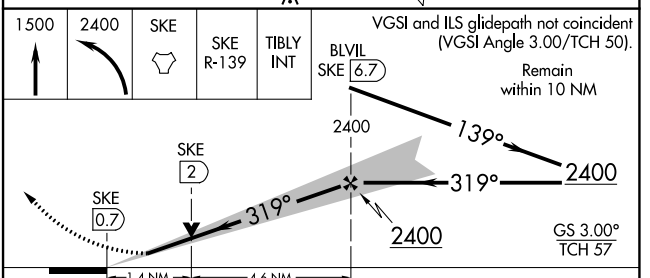
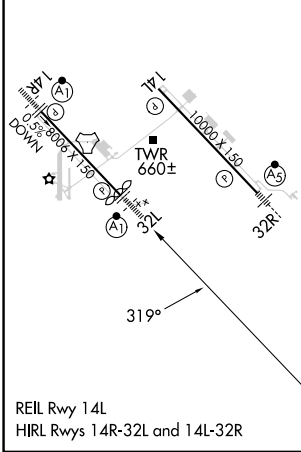
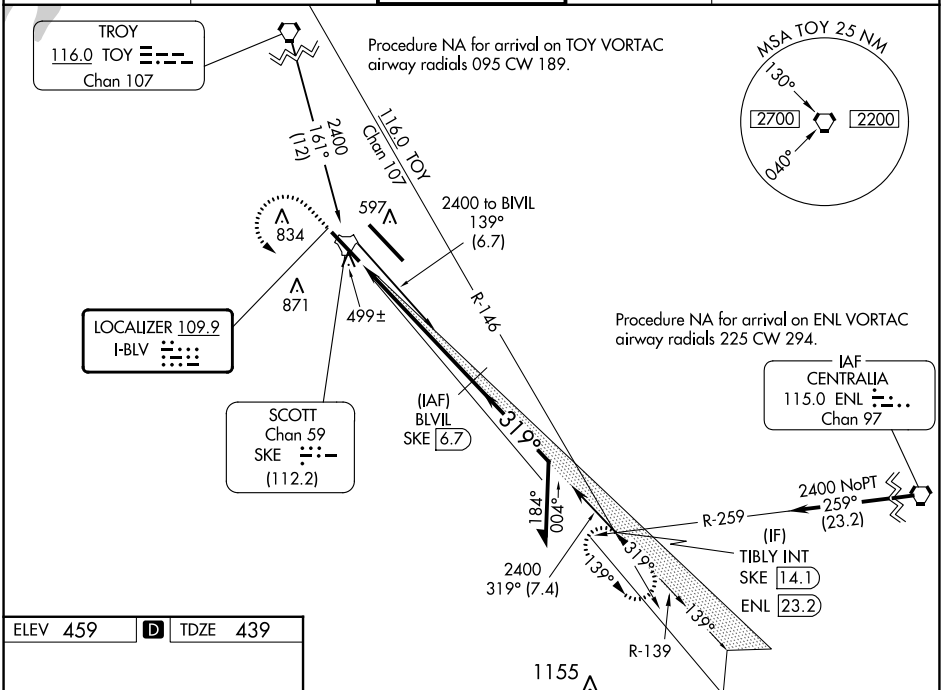


LOC I-BLV 109.9	APP CRS 319°	Rwy Idg 7822
		TDZE 439
		Apt Elev 459

ILS or LOC RWY 32L

SCOTT AFB/MIDAMERICA ST LOUIS (BLV)

DME required.		ALSIF-1 		MISSED APPROACH: Climb to 1500 then climbing left turn to 2400 direct SKE TACAN and on SKE R-139 to TIBLY INT/ SKE 14.1 DME and hold.	
<p>▲ For inop ALS, increase S-ILS 32L Cat E visibility to RVR 4000 and increase S-LOC 32L Cat C/D/E visibility to 1/2 SM. Procedure turn NA for Cat E aircraft.</p> <p>▲ DME from SKE TACAN. Simultaneous reception of I-BLV and SKE DME required.</p> <p>ASR *RVR 1800 authorized with use of FD or AP or HUD to DA.</p>		<p>ATIS * 128.7 256.7</p>		<p>ST LOUIS APP CON 125.2 281.5</p>	
<p>SCOTT TOWER 128.25 253.5</p>		<p>GND CON 119.2 275.8</p>		<p>CLNC DEL 119.875 263.025</p>	



CATEGORY	A	B	C	D	E
S-ILS 32L*	639/24 200 (200-1/2)				
S-LOC 32L	920/24	481 (500-1/2)	920/50 481 (500-1)		
C CIRCLING	1000-1 541 (600-1)	1120-1 661 (700-1)	1240-2 1/4 781 (800-2 1/4)	1240-2 1/2 781 (800-2 1/2)	1240-2 3/4 781 (800-2 3/4)

EC-3, 05 SEP 2024 to 03 OCT 2024

EC-3, 05 SEP 2024 to 03 OCT 2024