

LOC I-JDU <b>111.15</b>	APP CRS <b>319°</b>	Rwy ldg <b>10000</b> TDZE <b>442</b> Apt Elev <b>459</b>
----------------------------	------------------------	--

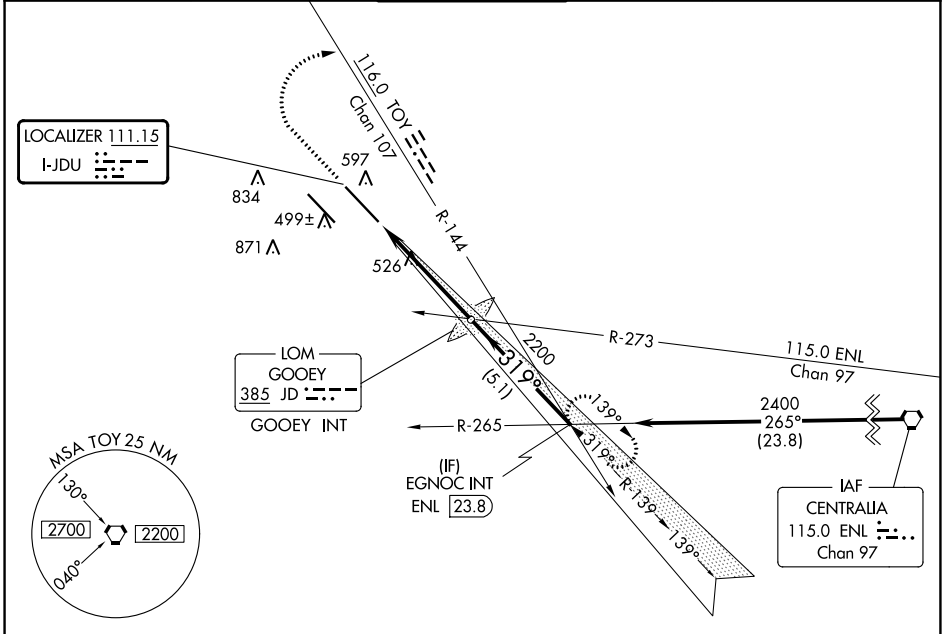
# ILS or LOC RWY 32R

SCOTT AFB/MIDAMERICA ST LOUIS (BLV)

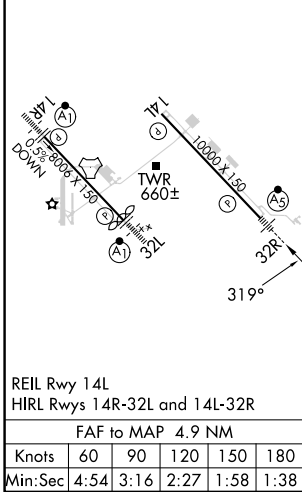
**ASR** For inop ALS, increase S-ILS 32R Cat E visibility to RVR 4000 and increase S-LOC visibility to RVR 5000.  
\* RVR 1800 authorized with use of FD or AP or HUD to DA.

**MALS** MISSED APPROACH: Climb to 1500 then climbing right turn to 2400 on heading 194° and TOY VORTAC R-144 to EGNOC INT and hold.

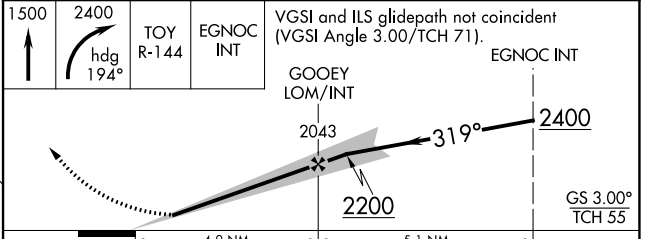
ATIS ★ <b>128.7 256.7</b>	ST LOUIS APP CON <b>125.2 281.5</b>	SCOTT TOWER <b>128.25 253.5</b>	GND CON <b>119.2 275.8</b>	CLNC DEL <b>119.875 263.025</b>
------------------------------	--	------------------------------------	-------------------------------	------------------------------------



ELEV <b>459</b>	<b>D</b>	TDZE <b>442</b>
-----------------	----------	-----------------



**A 1155** Procedure NA for arrivals on ENL VORTAC airway radials 225 CW 294.



CATEGORY	A	B	C	D	E
S-ILS 32R *	642/24 200 (200-½)				
S-LOC 32R	780/24	338 (400-½)	780/26	338 (400-½)	
<b>C</b> CIRCLING	1000-1 541 (600-1)	1120-1 661 (700-1)	1240-2¼ 781 (800-2¼)	1240-2½ 781 (800-2½)	1240-2¾ 781 (800-2¾)

EC-3, 05 SEP 2024 to 03 OCT 2024

EC-3, 05 SEP 2024 to 03 OCT 2024