

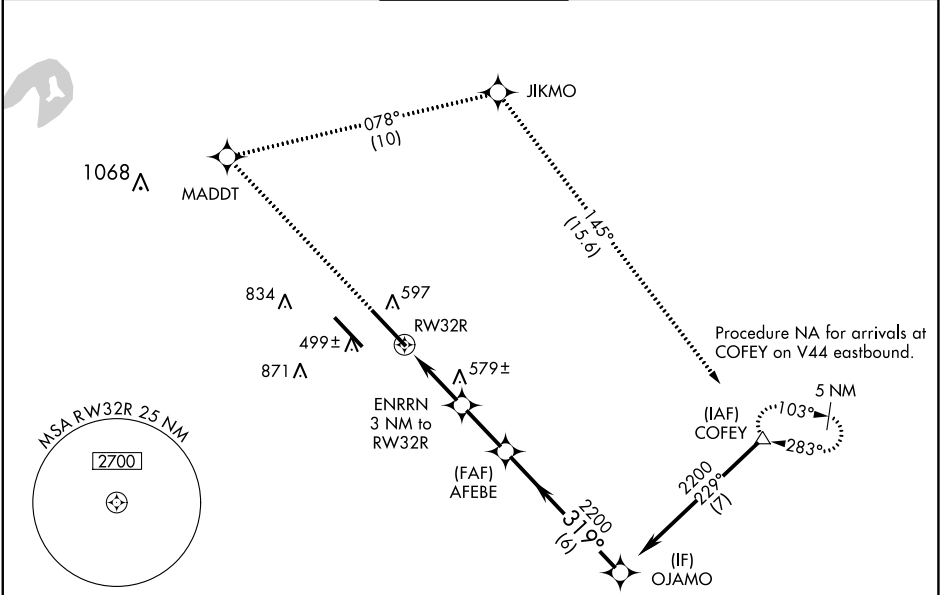
WAAS CH 50518 W32A	APP CRS 319°	Rwy Idg 10000 TDZE 442 Apt Elev 459
--	------------------------	--

RNAV (GPS) RWY 32R

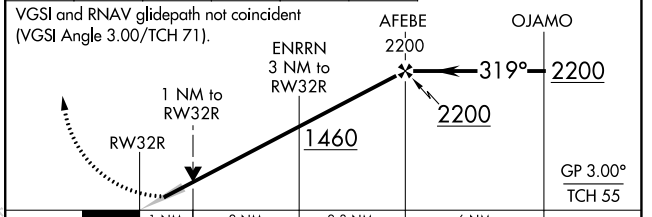
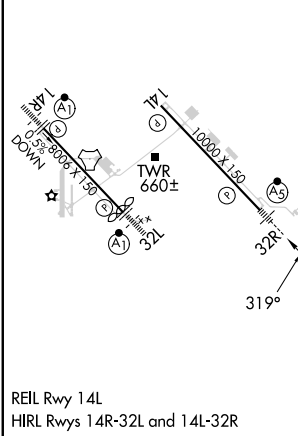
SCOTT AFB/MIDAMERICA ST LOUIS (BLV)

RNP APCH - GPS.		MALSR	MISSED APPROACH: Climb to 2300 direct MADDT and right turn on track 078° to JIKMO and on track 145° to COFEY and hold.
<p>For uncompensated Baro-VNAV systems, procedure NA below -18°C or above 54°C. For inop ALS, increase LNAV/VNAV all Cats visibility to RVR 5500.</p>	ASR		

ATIS ★ 128.7 256.7	ST LOUIS APP CON 125.2 281.5	SCOTT TOWER 128.25 253.5	GND CON 119.2 275.8	CLNC DEL 119.875 263.025
------------------------------	--	------------------------------------	-------------------------------	------------------------------------



ELEV 459	D TDZE 442	2300	MADDT	JIKMO	COFEY
		↑		tr 078°	tr 145°



CATEGORY	A	B	C	D
LPV DA	642/24 200 (200-½)			
LNAV/VNAV DA	804/35 362 (400-⅝)			
LNAV MDA	840/24	398 (400-½)	840/35	398 (400-⅝)
C CIRCLING	1000-1 541 (600-1)	1120-1 661 (700-1)	1240-2¼ 781 (800-2¼)	1240-2½ 781 (800-2½)

EC-3, 05 SEP 2024 to 03 OCT 2024

EC-3, 05 SEP 2024 to 03 OCT 2024