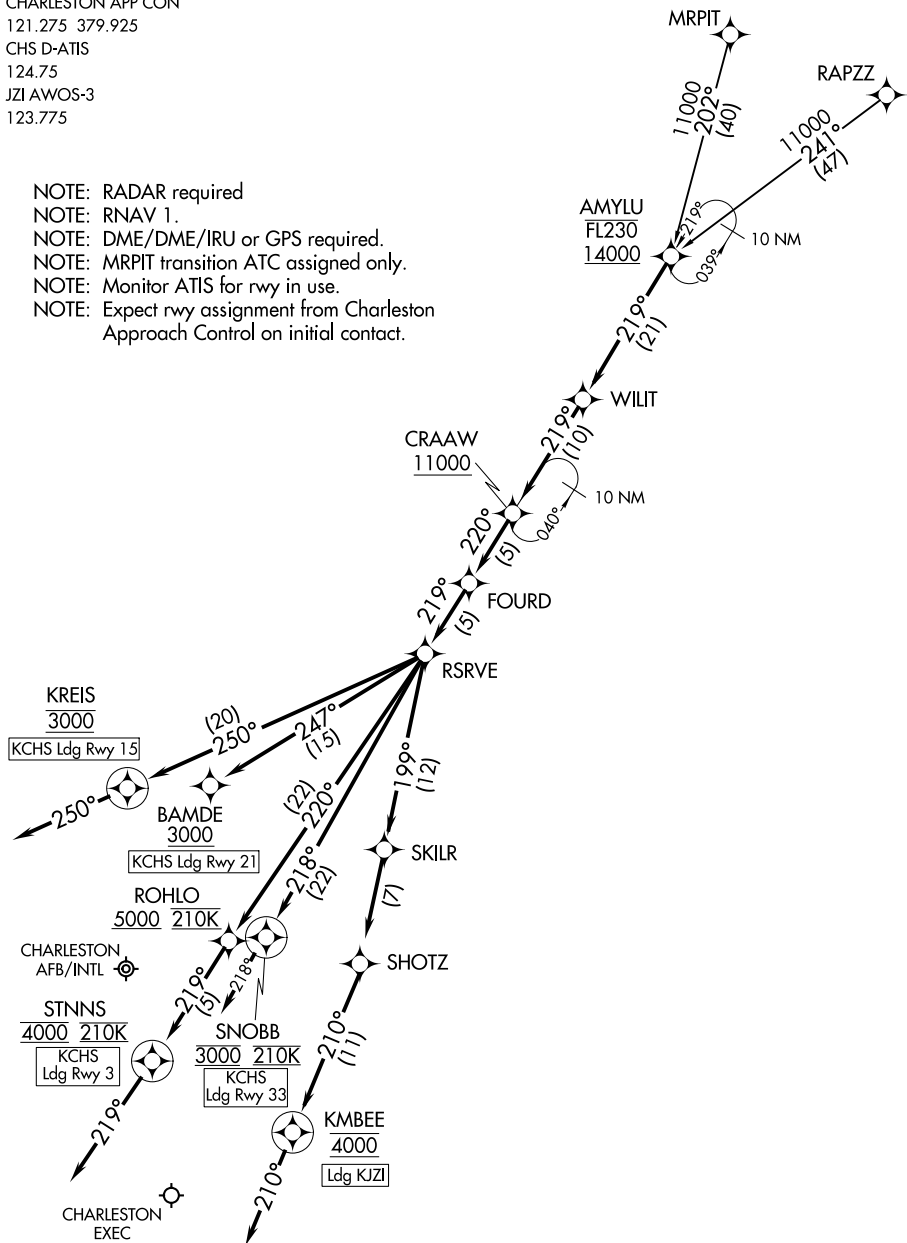


# AMYLU THREE ARRIVAL (RNAV)

CHARLESTON, SOUTH CAROLINA

CHARLESTON APP CON  
 121.275 379.925  
 CHS D-ATIS  
 124.75  
 JZI AWOS-3  
 123.775

- NOTE: RADAR required
- NOTE: RNAV 1.
- NOTE: DME/DME/IRU or GPS required.
- NOTE: MRPIT transition ATC assigned only.
- NOTE: Monitor ATIS for rwy in use.
- NOTE: Expect rwy assignment from Charleston Approach Control on initial contact.



(NARRATIVE ON FOLLOWING PAGE)

NOTE: Chart not to scale.

# AMYLU THREE ARRIVAL (RNAV)

CHARLESTON, SOUTH CAROLINA

SE-2, 05 SEP 2024 to 03 OCT 2024

SE-2, 05 SEP 2024 to 03 OCT 2024