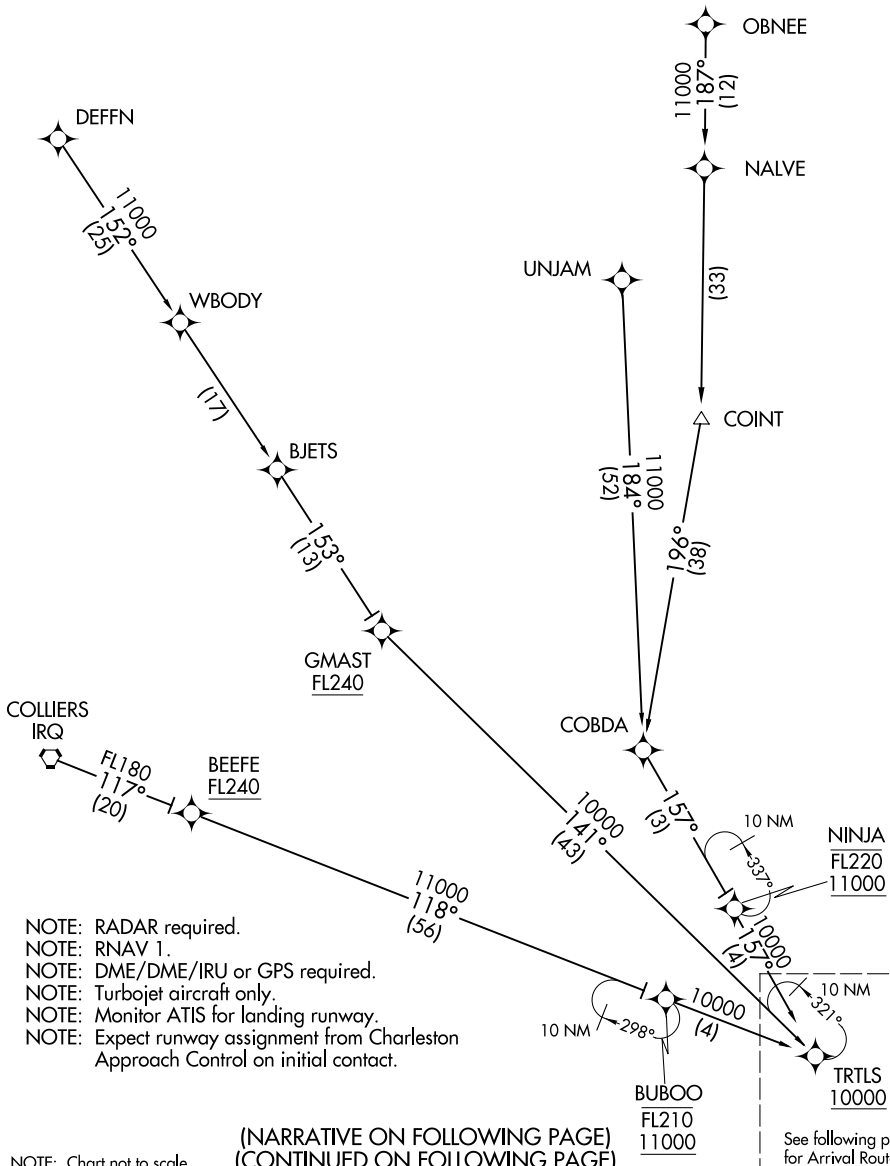


OSPRI SEVEN ARRIVAL (RNAV) Transition Routes CHARLESTON, SOUTH CAROLINA

CHARLESTON APP CON
 120.7 306.925
 CHS D-ATIS
 124.75
 JZI AWOS-3
 123.775

COLLIERS TRANSITION (IRQ.OSPRI7)
DEFFN TRANSITION (DEFFN.OSPRI7)
OBNEE TRANSITION (OBNEE.OSPRI7)
UNJAM TRANSITION (UNJAM.OSPRI7)



- NOTE: RADAR required.
- NOTE: RNAV 1.
- NOTE: DME/DME/IRU or GPS required.
- NOTE: Turbojet aircraft only.
- NOTE: Monitor ATIS for landing runway.
- NOTE: Expect runway assignment from Charleston Approach Control on initial contact.

(NARRATIVE ON FOLLOWING PAGE)
 (CONTINUED ON FOLLOWING PAGE)

NOTE: Chart not to scale.

See following page for Arrival Routes.

SE-2, 05 SEP 2024 to 03 OCT 2024

SE-2, 05 SEP 2024 to 03 OCT 2024