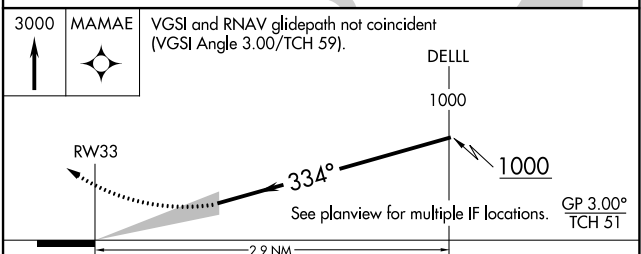
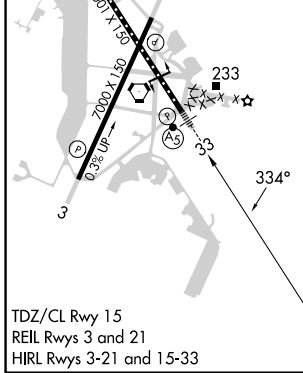
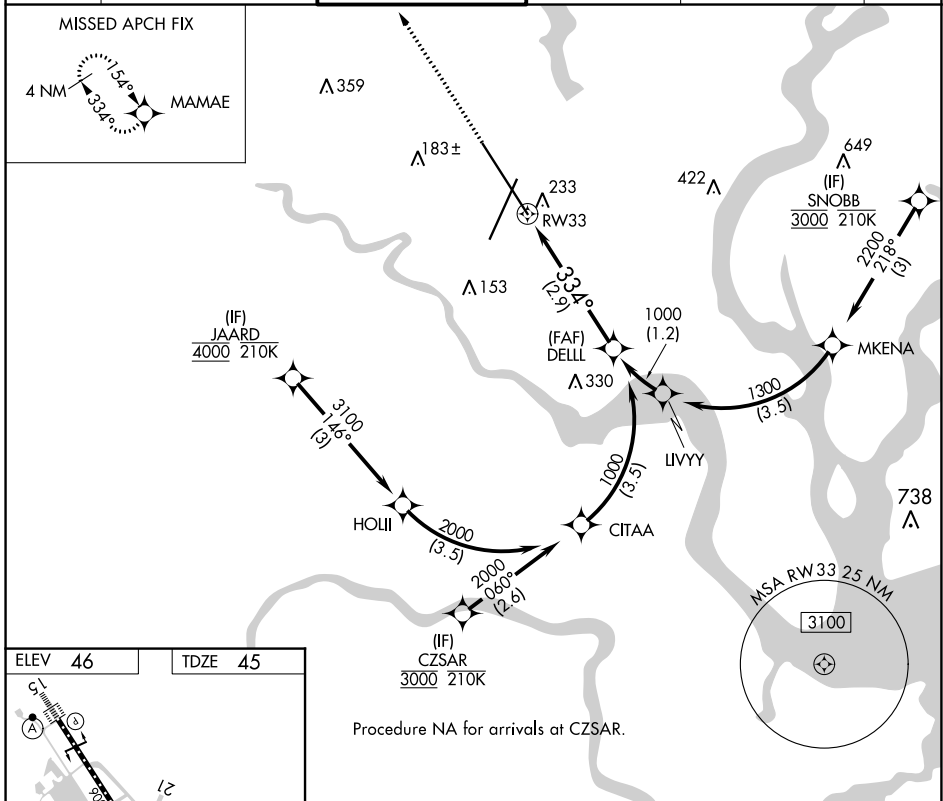


|             |          |             |
|-------------|----------|-------------|
| APP CRS     | Rwy Idg  | <b>9001</b> |
| <b>334°</b> | TDZE     | <b>45</b>   |
|             | Apt Elev | <b>46</b>   |

# RNAV (RNP) Z RWY 33

CHARLESTON AFB/INTL (CHS)

|  |                      |                    |  |                       |       |
|--|----------------------|--------------------|--|-----------------------|-------|
| RNP AR APCH. RF required.  |                      | MALSR              | MISSED APPROACH: Climb to 3000 direct MAMAE and hold, continue to climb-in-hold to 3000. |                       |       |
| ▼ For uncompensated Baro-VNAV systems, procedure NA below -5°C or above 54°C. For inop ALS, increase RNP 0.23 all Cats visibility to RVR 5500. |                      |                    |  |                       |       |
| D-ATIS   | CHARLESTON APP CON   | CHARLESTON TOWER   | GND CON  | CLNC DEL              | CPDLC |
| <b>124.75</b>  | <b>120.7 306.925</b> | <b>126.0 239.0</b> | <b>121.9 348.6</b>   | <b>127.325 291.65</b> |       |



| CATEGORY    | A | B      | C             | D |
|-------------|---|--------|---------------|---|
| RNP 0.23 DA |   | 419/35 | 374 (400-3/4) |   |
| RNP 0.30 DA |   | 477/40 | 432 (500-3/4) |   |

## AUTHORIZATION REQUIRED

SE-2, 05 SEP 2024 to 03 OCT 2024

SE-2, 05 SEP 2024 to 03 OCT 2024