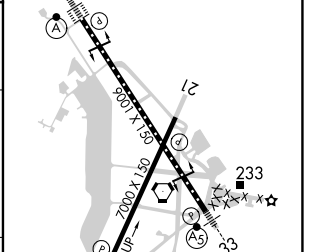
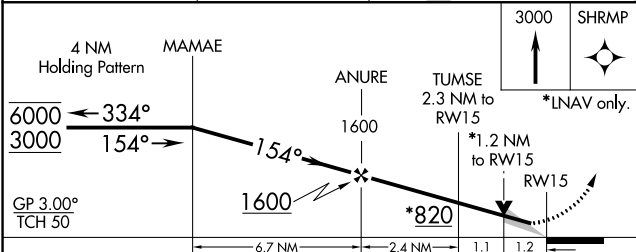
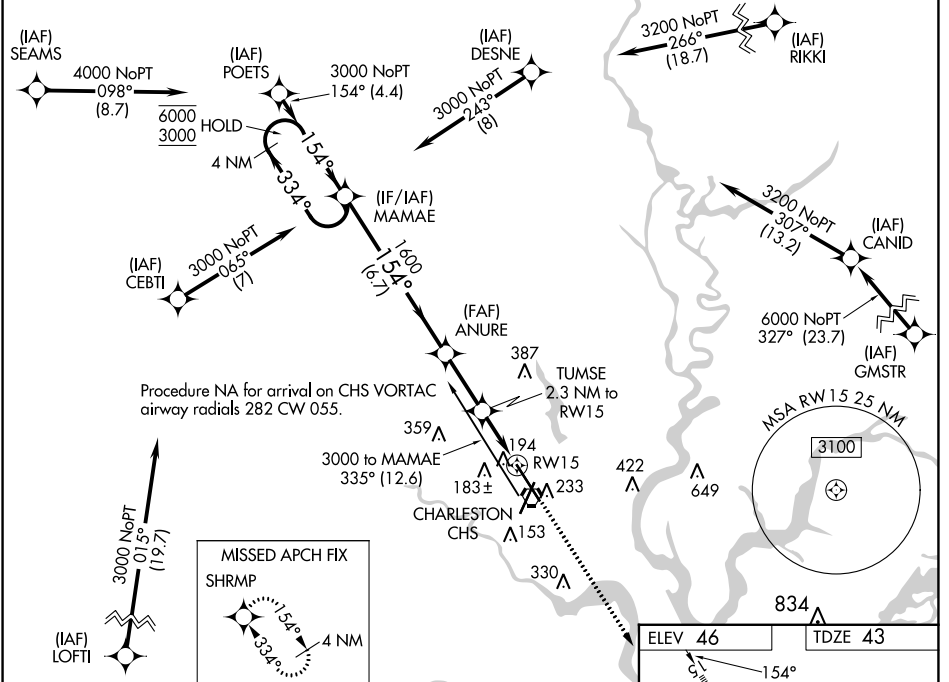


WAAS CH <b>93519</b> <b>W15A</b>	APP CRS <b>154°</b>	Rwy Idg TDZE Apt Elev	<b>9001</b> <b>43</b> <b>46</b>
--	------------------------	-----------------------------	---------------------------------------

# RNAV (GPS) Y RWY 15

CHARLESTON AFB/INTL (CHS)

RNP APCH.		ALSIF-2		MISSED APPROACH: Climb to 3000 direct SHRMP and hold.	
⚠ For uncompensated Baro-VNAV systems, LNAV/VNAV NA below -5°C or above 54°C. For inop ALS, increase LNAV Cat C/D visibility to RVR 6000.					
D-ATIS	CHARLESTON APP CON	CHARLESTON TOWER	GND CON	CLNC DEL	CPDLC
<b>124.75</b>	<b>120.7 306.925</b>	<b>126.0 239.0</b>	<b>121.9 348.6</b>	<b>127.325 291.65</b>	



CATEGORY	A	B	C	D
LPV DA		243/18	200 (200-½)	
LNAV/VNAV DA		375/26	332 (400-½)	
LNAV MDA	460/24	417 (500-½)	460/40	417 (500-¾)
<b>C</b> CIRCLING	540-1	494 (500-1)	540-1½ 494 (500-1½)	740-2¼ 694 (700-2¼)

TDZ/CL Rwy 15  
REIL Rws 3 and 21  
HIRL Rws 3-21 and 15-33

SE-2, 05 SEP 2024 to 03 OCT 2024

SE-2, 05 SEP 2024 to 03 OCT 2024