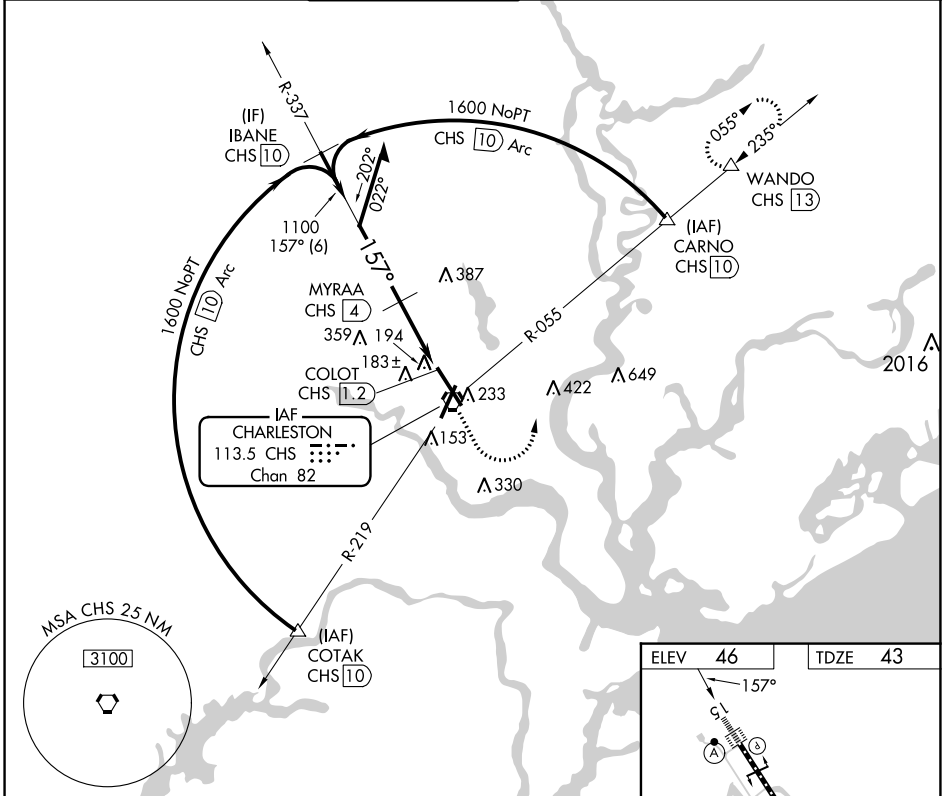


VORTAC CHS 113.5 Chan 82	APP CRS 157°	Rwy Idg 9001 TDZE 43 Apt Elev 46
--	------------------------	---

VOR Y or TACAN Y RWY 15

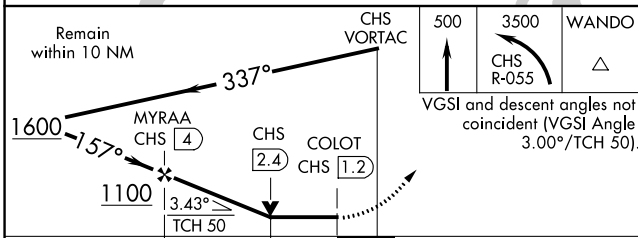
CHARLESTON AFB/INTL (CHS)

DME required. ▼ For inop ALS, increase S-15 Cat A/B visibility to RVR 5500 and Cat C/D visibility to RVR 6000. ▲		ALSF-2 ▲	MISSED APPROACH: Climb to 500 then climbing left turn to 3500 on CHS VORTAC R-055 to WANDO/CHS 13 DME and hold, continue climb-in-hold to 3500.		
D-ATIS 124.75	CHARLESTON APP CON 120.7 306.925	CHARLESTON TOWER 126.0 239.0	GND CON 121.9 348.6	CLNC DEL 127.325 291.65	CPDLC



SE-2, 05 SEP 2024 to 03 OCT 2024

SE-2, 05 SEP 2024 to 03 OCT 2024



ELEV 46	TDZE 43
----------------	----------------

The diagram shows the runway layout:

- Runway 15: 1500' x 150'
- Runway 3: 2000' x 150'
- Runway 21: 2000' x 150'
- Runway 33: 2000' x 150'
- Runway 35: 2000' x 150'
- Runway 37: 2000' x 150'
- Runway 38: 2000' x 150'
- Runway 39: 2000' x 150'
- Runway 40: 2000' x 150'
- Runway 41: 2000' x 150'
- Runway 42: 2000' x 150'
- Runway 43: 2000' x 150'
- Runway 44: 2000' x 150'
- Runway 45: 2000' x 150'
- Runway 46: 2000' x 150'
- Runway 47: 2000' x 150'
- Runway 48: 2000' x 150'
- Runway 49: 2000' x 150'
- Runway 50: 2000' x 150'
- Runway 51: 2000' x 150'
- Runway 52: 2000' x 150'
- Runway 53: 2000' x 150'
- Runway 54: 2000' x 150'
- Runway 55: 2000' x 150'
- Runway 56: 2000' x 150'
- Runway 57: 2000' x 150'
- Runway 58: 2000' x 150'
- Runway 59: 2000' x 150'
- Runway 60: 2000' x 150'
- Runway 61: 2000' x 150'
- Runway 62: 2000' x 150'
- Runway 63: 2000' x 150'
- Runway 64: 2000' x 150'
- Runway 65: 2000' x 150'
- Runway 66: 2000' x 150'
- Runway 67: 2000' x 150'
- Runway 68: 2000' x 150'
- Runway 69: 2000' x 150'
- Runway 70: 2000' x 150'
- Runway 71: 2000' x 150'
- Runway 72: 2000' x 150'
- Runway 73: 2000' x 150'
- Runway 74: 2000' x 150'
- Runway 75: 2000' x 150'
- Runway 76: 2000' x 150'
- Runway 77: 2000' x 150'
- Runway 78: 2000' x 150'
- Runway 79: 2000' x 150'
- Runway 80: 2000' x 150'
- Runway 81: 2000' x 150'
- Runway 82: 2000' x 150'
- Runway 83: 2000' x 150'
- Runway 84: 2000' x 150'
- Runway 85: 2000' x 150'
- Runway 86: 2000' x 150'
- Runway 87: 2000' x 150'
- Runway 88: 2000' x 150'
- Runway 89: 2000' x 150'
- Runway 90: 2000' x 150'
- Runway 91: 2000' x 150'
- Runway 92: 2000' x 150'
- Runway 93: 2000' x 150'
- Runway 94: 2000' x 150'
- Runway 95: 2000' x 150'
- Runway 96: 2000' x 150'
- Runway 97: 2000' x 150'
- Runway 98: 2000' x 150'
- Runway 99: 2000' x 150'
- Runway 100: 2000' x 150'

CATEGORY	A	B	C	D
S-15	460/24	417 (500-½)	460/40	417 (500-¾)
CIRCLING	540-1	494 (500-1)	540-1½	740-2¼
			494 (500-1½)	694 (700-2¼)

TDZ/CL Rwy 15
REIL Rws 3 and 21
HIRL Rws 3-21 and 15-33