

LOC I-VYK <b>108.3</b>	APP CRS <b>292°</b>	Rwy Idg TDZE Apt Elev	<b>8506</b> <b>227</b> <b>236</b>
---------------------------	------------------------	-----------------------------	---

# ILS or LOC RWY 29

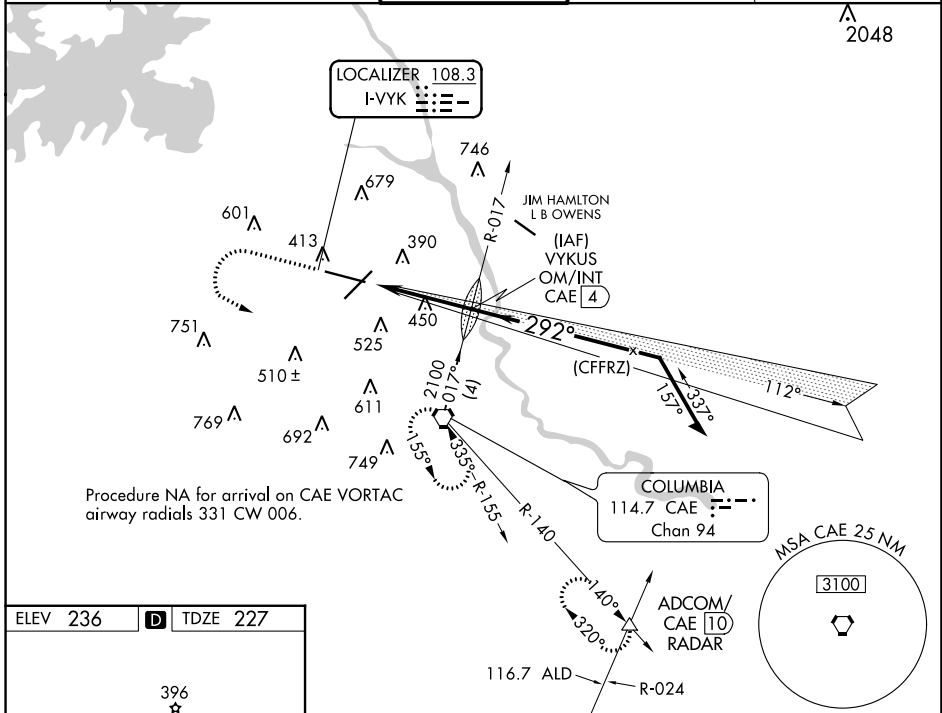
COLUMBIA METRO (CAE)

**⚠** For inop ALS, increase S-ILS 29 Cat E visibility to RVR 4000, and S-LOC 29 Cats C/D/E to 1½ SM.  
\*RVR 1800 authorized with use of FD or AP or HUD to DA.

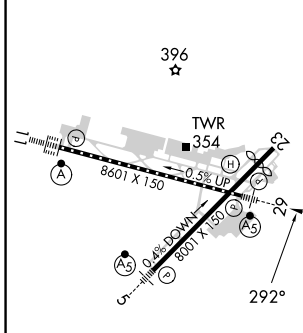
**MALSR**  
AS

**MISSED APPROACH:** Climb to 1000 then climbing left turn to 2300 direct CAE VORTAC and hold, continue climb-in-hold to 2300. (TACAN aircraft continue on CAE VORTAC R-140 to ADCOM INT/10 DME and hold NW, right turn, 140° inbound).

ATIS <b>120.15</b>	COLUMBIA APP CON <b>133.4 285.6</b> (290°-109°) <b>124.15 338.2</b> (110°-289°)	COLUMBIA TOWER <b>119.5 257.8</b>	GND CON <b>121.9 348.6</b>	CLNC DEL <b>119.75</b>
-----------------------	---	--------------------------------------	-------------------------------	---------------------------



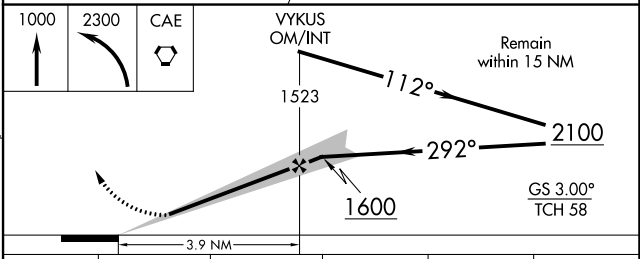
ELEV 236	<b>D</b>	TDZE 227
----------	----------	----------



REIL Rwy 23  
TDZ/CL Rwy 11  
HIRL Rws 5-23 and 11-29

FAF to MAP 3.9 NM

Knots	60	90	120	150	180
Min:Sec	3:54	2:36	1:57	1:34	1:18



CATEGORY	A	B	C	D	E
S-ILS 29*	427/24 200 (200-½)				
S-LOC 29	700/24	473 (500-½)	700/50	473 (500-1)	
<b>C</b> CIRCLING	740-1 504 (600-1)	860-1 624 (700-1)	1040-2¼ 804 (900-2¼)	1040-2½ 804 (900-2½)	1040-2¾ 804 (900-2¾)

SE-2, 05 SEP 2024 to 03 OCT 2024

SE-2, 05 SEP 2024 to 03 OCT 2024