

WAAS CH 40026 W23A	APP CRS 232°	Rwy Idg TDZE Apt Elev	7001 213 236
--	------------------------	-----------------------------	---

RNAV (GPS) RWY 23

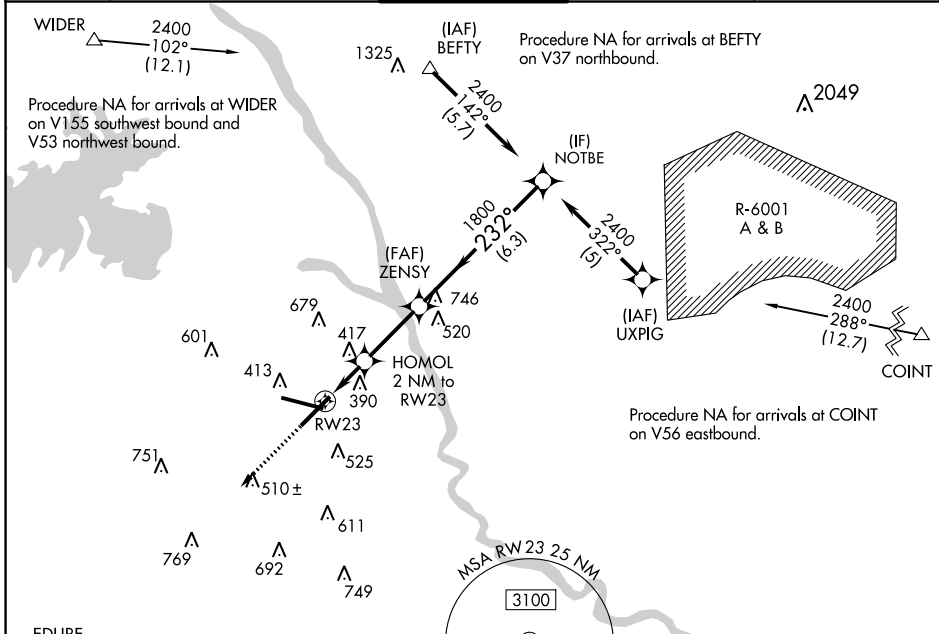
COLUMBIA METRO (CAE)

RNP APCH - GPS.

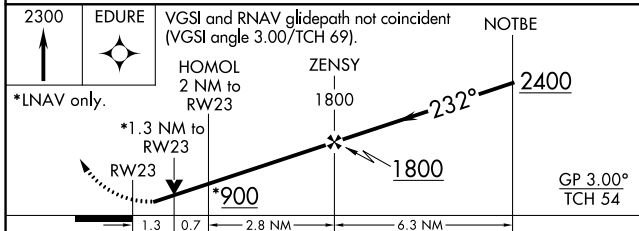
▼ For uncompensated Baro-VNAV systems, LNAV/VNAV NA below -15°C or above 54°C. Rwy 23 helicopter visibility reduction below ¾ SM NA.

MISSED APPROACH: Climb to 2300 direct EDURE and hold.

ATIS 120.15	COLUMBIA APP CON 133.4 285.6 (290°-109°) 124.15 338.2 (110°-289°)	COLUMBIA TOWER 119.5 257.8	GND CON 121.9 348.6	CLNC DEL 119.75
-----------------------	---	--------------------------------------	-------------------------------	---------------------------

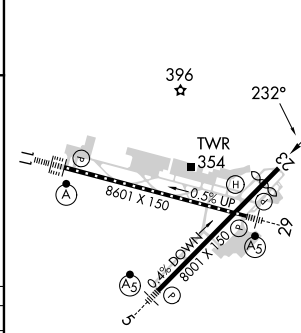


2300	EDURE	VGSI and RNAV glidepath not coincident (VGSI angle 3.00/TCH 69).	NOTBE
------	-------	--	-------



CATEGORY	A	B	C	D
LPV DA	503/50		290 (300-1)	
LNAV/VNAV DA	709-1¼		496 (500-1¼)	
LNAV MDA	680/50	467 (500-1)	680/60	680-1½
			467 (500-1¼)	467 (500-1½)
CIRCLING	740-1	860-1	1040-2¼	1040-2½
	504 (600-1)	624 (700-1)	804 (900-2¼)	804 (900-2½)

ELEV 236	TDZE 213
----------	----------



REIL Rwy 23
TDZ/CL Rwy 11
HIRL Rwys 5-23 and 11-29

SE-2, 05 SEP 2024 to 03 OCT 2024

SE-2, 05 SEP 2024 to 03 OCT 2024