

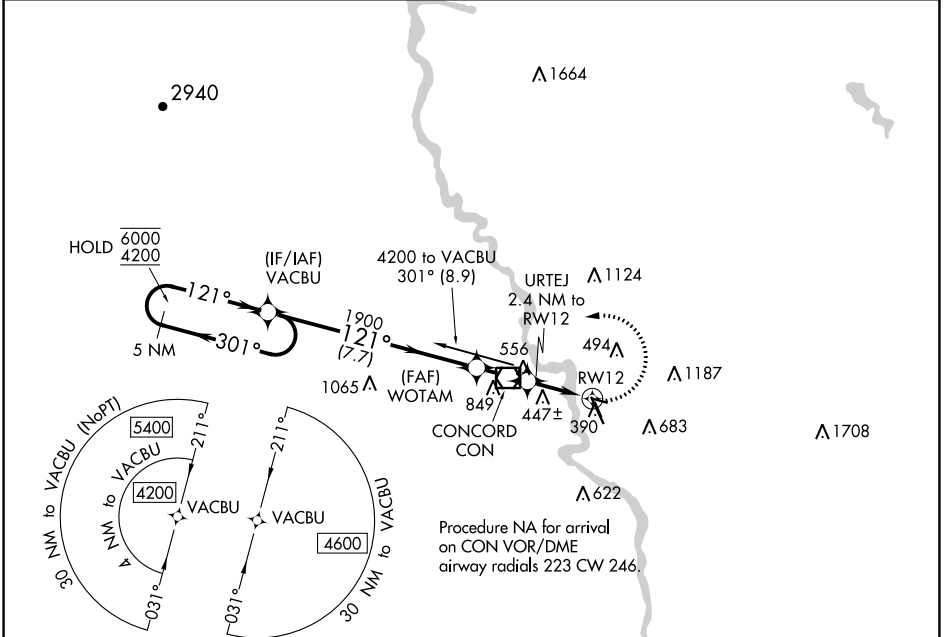
APP CRS	Rwy Idg	3200
121°	TDZE	342
	Apt Elev	342

RNAV (GPS) RWY 12

CONCORD MUNI (CON)

RNP APCH.	MISSED APPROACH: Climbing left turn to 4200 direct VACBU and hold, continue climb-in-hold to 4200.
<p>▼ Rwy 12 helicopter visibility reduction below 1 SM NA.</p> <p>▲ Straight-in Rwy 12 NA at night, Circling Rwy 12, 17, 30 NA at night.</p>	

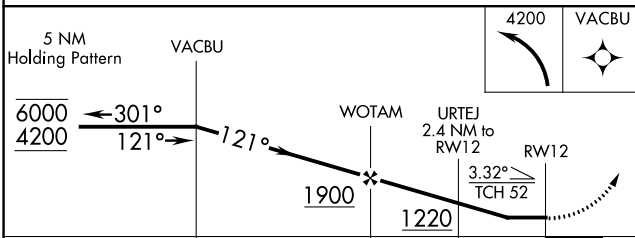
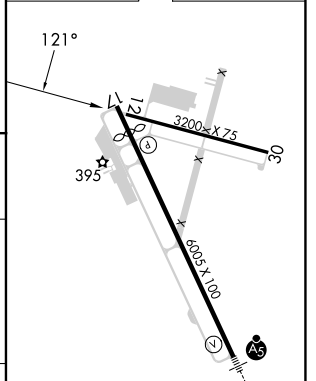
ASOS 132.325	BOSTON APP CON 127.35 269.075	CLNC DEL 133.65	UNICOM 122.7 (CTAF) 0
------------------------	---	---------------------------	--



NE-1, 05 SEP 2024 to 03 OCT 2024

NE-1, 05 SEP 2024 to 03 OCT 2024

ELEV 342	TDZE 342
----------	----------



CATEGORY	A	B	C	D
LNAV MDA	1040-1	698 (700-1)	1040-2	698 (700-2)
CIRCLING	1040-1 698 (700-1)	1080-1 738 (800-1)	1500-3	1158 (1200-3)

MIRL Rwy 12-30 **0**
HIRL Rwy 17-35 **0**