

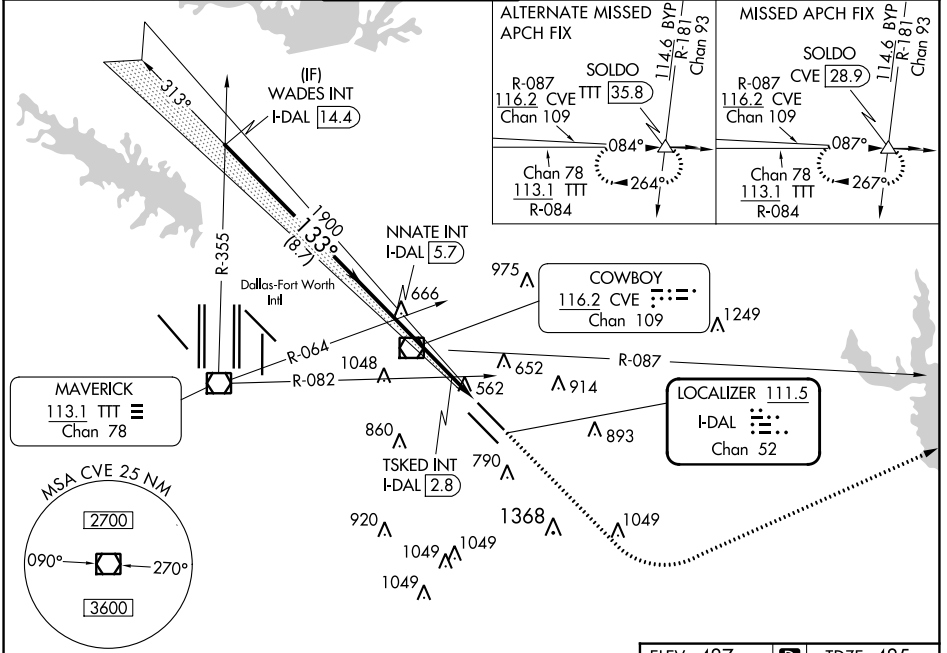
LOC/DME I-DAL 111.5 Chan 52	APP CRS 133°	Rwy Idg 7352 TDZE 485 Apt Elev 487
---	------------------------	---

ILS Y or LOC Y RWY 13L

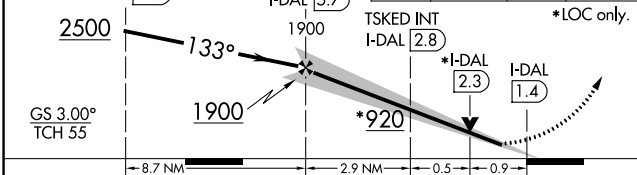
DALLAS LOVE FLD (DAL)

RADAR required for procedure entry.		MALSR	MISSED APPROACH: Climb to 1000 then climbing left turn to 3000 on heading 060° and CVE VOR/DME R-087 to SOLDLO INT/CVE 28.9 DME and hold.
Simultaneous approach authorized.			

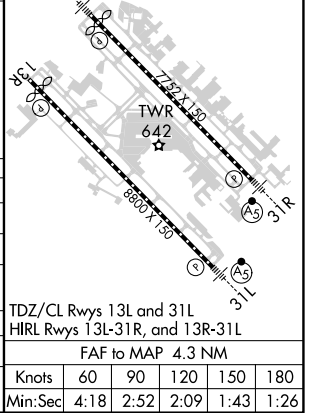
D-ATIS 120.15	REGIONAL APP CON NORTH 124.3 282.275 SOUTH 125.2 343.65	LOVE TOWER 123.7 239.3	GND CON 121.75 348.6	CLNC DEL 127.9	CPDLC
-------------------------	---	----------------------------------	--------------------------------	--------------------------	-------



ELEV 487	D	TDZE 485
----------	----------	----------



CATEGORY	A	B	C	D
S-ILS 13L	685/18 200 (200-½)			
S-LOC 13L	920/24	435 (500-½)	920/40	435 (500-¾)
C CIRCLING	1000-1 513 (600-1)	1140-1 653 (700-1)	1220-2 733 (800-2)	1520-3 1033 (1100-3)
TSKED FIX MINIMUMS (DUAL VOR RECEIVERS OR DME REQUIRED)				
S-LOC 13L	820/24	335 (400-½)	820/26	335 (400-¾)
C CIRCLING	1000-1 513 (600-1)	1140-1 653 (700-1)	1220-2 733 (800-2)	1520-3 1033 (1100-3)



SC-2, 05 SEP 2024 to 03 OCT 2024

SC-2, 05 SEP 2024 to 03 OCT 2024